



D2D Race 2023

Race Briefing Presentation

Con Murphy IRO – Race Officer
Adam Winkelmann – d2d Race Committee Chairman



Billy Naughton Ltd
Est. 1968

WICKLOW
WOLF
BREWING CO.



"A STITCH IN TIME"
EMBROIDERERS LTD.



The 2019 d2d start



Billy Naughton Ltd
Est. 1968

Wicklow
Wolf
Brewing Co.



GREEN OCEAN
SAILING



"A STITCH IN TIME"
EMBROIDERERS LTD.



The 2023 d2d Start

Time – 1400

Location of start line – Scotmans Bay

Tide slightly against the fleet

VHF Ch.72

Flagship – Freebird, Blue Rib on Pin End

Cruise Liner (Viking Star) Tendering – RIBs (displaying a yellow flag) guide and escort each tender to and from the tender berth and keep a listening watch on VHF Ch 14.



Billy Naughton Ltd
Est. 1968

Wicklow
WOLF
BREWING CO.



GREEN OCEAN
LIFE



"A STITCH IN TIME"
EMBROIDERERS LTD.



Safety - The D2D has an excellent safety record

- Know your Hazards
 - Collision with other competitors, commercial vessels
 - Grounding – nav error, equipment/rig failure
 - Boat Damage – gear failure, fire on board
 - Personal Injury – accident,
 - Man overboard
 - Weather – strong winds, bad vis, heavy/confused seas
 - Fatigue, hypothermia, seasickness
 - Illness



Billy Naughton Ltd
Est. 1968

WICKLOW
WOLF
BREWING CO.



GREEN OCEAN
SAILING



"A STITCH IN TIME"
EMBROIDERERS LTD.



Mitigate the Risks

- Mitigations
 - preparation & training
 - crew sufficient in number, experience and fitness
 - safety equipment - properly maintained, stowed, in date and familiar to the crew
 - good seamanship, lookout, AIS on
 - knowledge of emergency communications, use of liferaft, crew overboard recovery
 - use personal buoyancy and safety harnesses
 - rules & regulations compliance
 - familiarity with first aid Procedures, hypothermia and cardio-pulmonary resuscitation

Please don't hesitate to contact the race committee or the coastguard if you have any safety concerns or need assistance



Billy Naughton Ltd
Est. 1968

WICKLOW
WOLF
BREWING CO.



GREEN OCEAN
SAILING



"A STITCH IN TIME"
EMBROIDERERS LTD.



Race Communications

- Communications - SI Front cover and SI 3
- Continuously monitor Ch 16 & 72 during the race
- Reporting in event of AIS/Tracker failure SI 11
- Procedures in case of retirement - SI 15
- Temporary Discontinuance of racing – SI 27
- Emergency – Coastguard 1st Point of Contact



Billy Naughton Ltd
Est. 1968

WICKLOW
WOLF
BREWING CO.



GREEN OCEAN
SAILING



"A STITCH IN TIME"
EMBROIDERERS LTD.



The Course

8. THE COURSE

8.1 The course shall be from the starting line in Scotsman's Bay, East of Dun Laoghaire Harbour,

leaving the marks listed hereunder to starboard:

- (i) Muglins
- (ii) Wicklow Head
- (iii) Tuskar Rock
- (iv) Barrels Light Buoy
- (v) Bore Rocks Buoy
- (vi) Coningbeg Light Buoy
- (vii) Red Bank Buoy
- (viii) Old Head of Kinsale
- (ix) Fastnet Rock
- (x) Mizen Head
- (xi) Calf Rock
- (xii) Gull Rock (off Bull Rock) and
- (xiii) Washerwoman Rock (off Great Skellig)
- (xiv) Great Skellig

and thence to the finishing line off the entrance to Dingle Harbour.



Billy Naughton Ltd
Est. 1968

WICKLOW
WOLF
BREWING CO.



GREEN OCEAN
SAILING

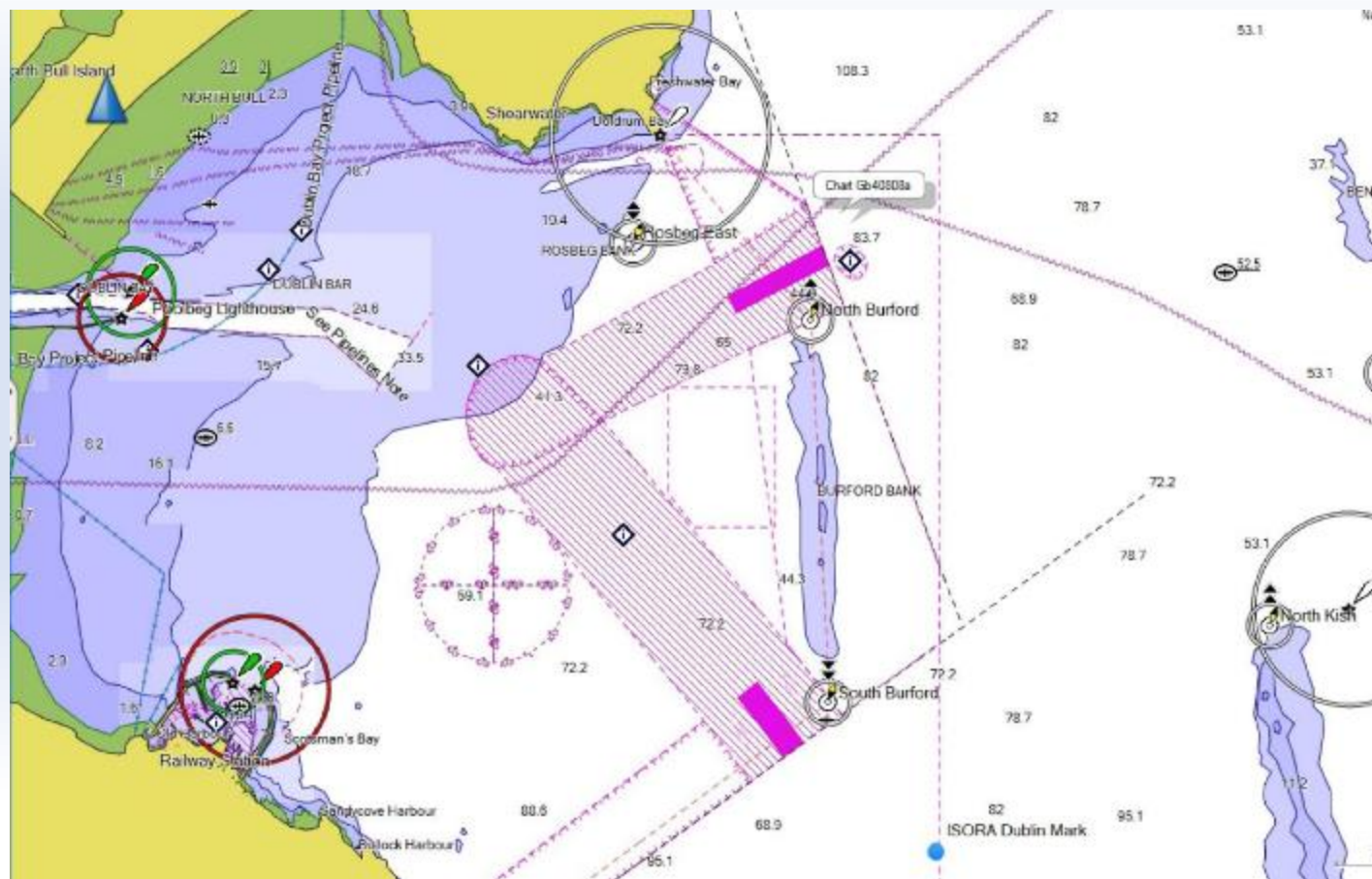


"A STITCH IN TIME"
EMBROIDERERS LTD.



Cruise Liner Anchorage & Dublin TSS

- ISORA Virtual 'Dublin Mark
- N 53 17.110
- W 006 00.100
- Cruise Liner (Viking Star) anchorage



Billy Naughton Ltd
Est. 1968

Wicklow
Wolf
Brewing Co.



"A STITCH IN TIME"
EMBROIDERERS LTD.



Tuskar TSS

- RRS 56.2
- A boat shall comply with rule 10, Traffic Separation Schemes, of the IRLCAS.



Billy Naughton Ltd
Est. 1968

Wicklow
WOLF
BREWING CO.



GREEN OCEAN
SAILING



"A STITCH IN TIME"
EMBROIDERERS LTD.



- Rule 10 - Traffic Separation Schemes
- (b) A vessel using a traffic separation scheme shall:
 - (i) proceed in the appropriate traffic lane in the general direction of traffic flow for that lane;
 - (ii) so far as practicable keep clear of a traffic separation line or separation zone;
 - (iii) normally join or leave a traffic lane at the termination of the lane, but when joining or leaving from either side shall do so at as small an angle to the general direction of traffic flow as practicable.



Billy Naughton Ltd
Est. 1968

Wicklow
Wolf
Brewing Co.



GREEN OCEAN
SAILING



"A STITCH IN TIME"
EMBROIDERERS LTD.



- (c) A vessel shall, so far as practicable, avoid crossing traffic lanes but if obliged to do so shall cross on a heading as nearly as practicable at right angles to the general direction of traffic flow.
- (f) A vessel navigating in areas near the terminations of traffic separation schemes shall do so with particular caution.
- (j) A vessel of less than 20 metres in length or a sailing vessel shall not impede the safe passage of a power-driven vessel following a traffic lane.



Billy Naughton Ltd
Est. 1968

Wicklow
Wolf
Brewing Co.



GREEN OCEAN
SAILING



"A STITCH IN TIME"
EMBROIDERERS LTD.



Fastnet TSS

- Marine Notice 33 of 2023
 - Kinsale gas rig clearance
 - Dina Star Ch 13
 - Give it a wide berth



Billy Naughton Ltd
Est. 1968

WICKLOW
WOLF
BREWING CO.



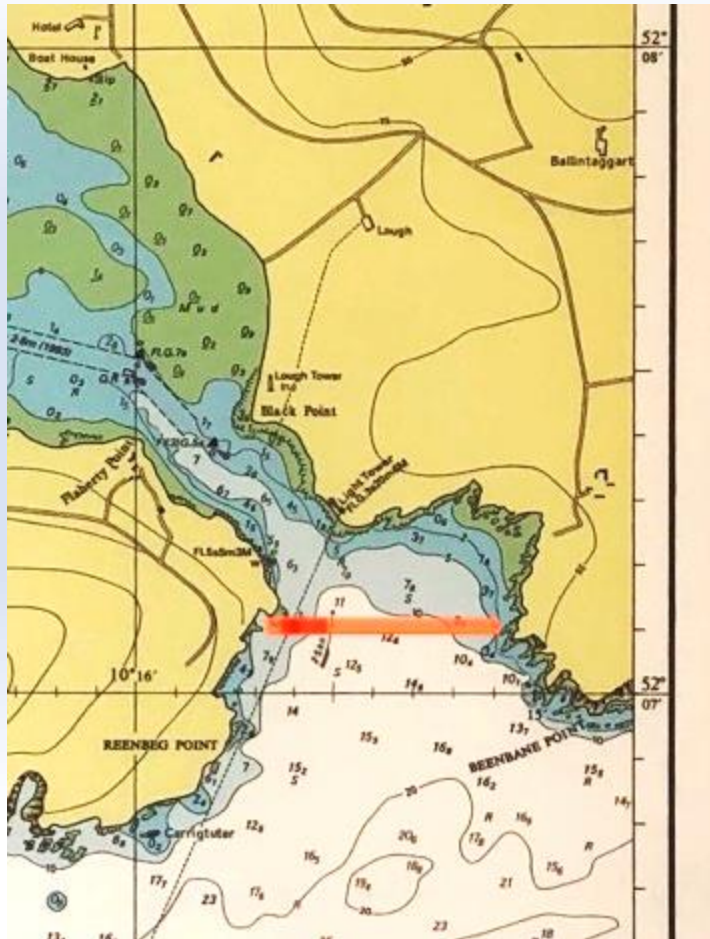
GREEN OCEAN



"A STITCH IN TIME"
EMBROIDERERS LTD.



Finish Line



- Location of finish line - 52° 07'.10 N line of latitude at the entrance to Dingle Harbour
- Will be taken from the YB Tracker – be sure to sail through the line to record your finish on YB (on your transom)
- For the declaration, self time time in Hrs, Mins, Secs
- Any queries, Dingle Finish will be listening on Ch 72



Billy Naughton Ltd
Est. 1968

WICKLOW
WOLF
BREWING CO.



GREEN OCEAN
SAILING



"A STITCH IN TIME"
EMBROIDERERS LTD.



Finish/Harbour Entrance - looking West



Dingle
Bay

Dingle
Harbour



Billy Naughton Ltd
Est. 1968

WICKLOW
WOLF
BREWING CO.



GREEN OCEAN
SAILING



"A STITCH IN TIME"
EMBROIDERERS LTD.



Dingle Harbour Berthing

Approaching the entrance, call 'Dingle Race Office' on Ch 37.

Covid – avoid congregating on Dingle Marina Property



Billy Naughton Ltd
Est. 1968



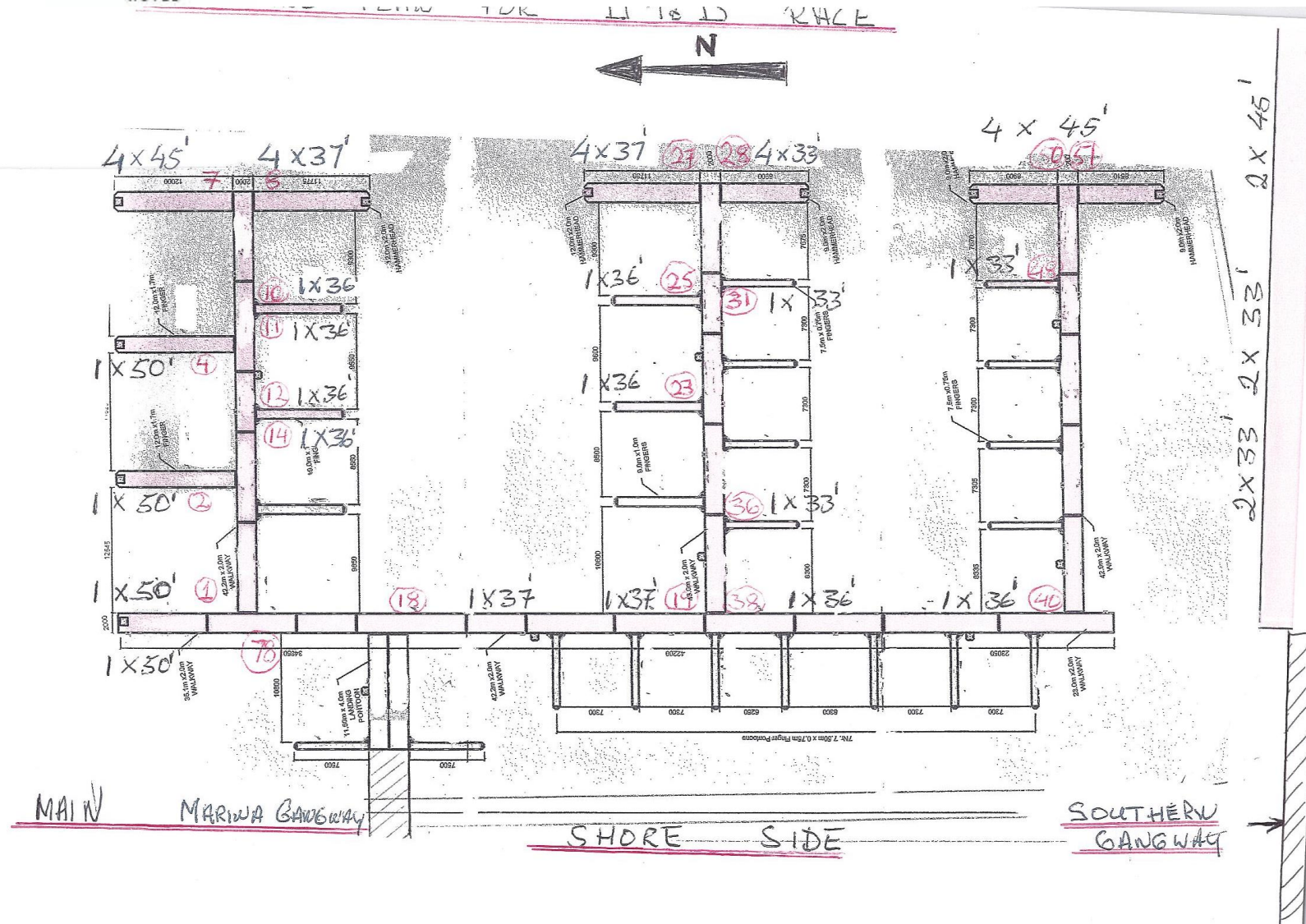


Dingle Docking Plan

All the boats in the western basin - no need for Ferrying crews ashore.

Different sizes of boats will have to stick to what's on the plan for it to work

The code for marina gates is 0024 and code for showers (€1 coin operated) and toilets is 1492



Billy Naughton Ltd
Est. 1968

WICKLOW
WOLF
BREWING CO.



GREEN OCEAN
SAILING

"A STITCH IN TIME"
EMBROIDERERS LTD.



Protest Committee

- Michael O'Connor IJ Chair
- Cxema Pico IJ
- Emmet Dalton NJ
- Hearing will be on Zoom/Teams
- Complete form Online (race app)



D2D Race 2023: Hearing Request Form

To be completed by the Skipper

For the purpose of a Hearing Request, you may want to submit a diagram of the incident.

Please download a blank diagram [here](#)

You can Upload it from a computer or take a picture from your phone to upload it (if using



Billy Naughton Ltd
Est. 1968

Wicklow
WOLF
BREWING CO.



GREEN OCEAN
SAILING



"A STITCH IN TIME"
EMBROIDERERS LTD.



Race Admin

- Pre race form (crew contact list and safety declaration) - submit online on www.d2drace.ie by **0900 tomorrow**.
- Collect YB trackers at NYC tomorrow morning
- Race finish Declaration – submit online within 2hrs of finishing
- Return YB trackers to Race Office on arrival at Dingle Marina
- Hearing requests - submit online within 2hrs of finishing
- Official Results will be available on Sailwave on www.d2drace.ie
- Prizegiving – Dingle Skellig - Saturday from 1900



Billy Naughton Ltd
Est. 1968

Wicklow
WOLF
BREWING CO.



GREEN OCEAN
SAILING



"A STITCH IN TIME"
EMBROIDERERS LTD.



Sponsors & Supporting Organisations

- Volvo Cars Ireland
- Billy Naughton Ltd
- Dingle Skellig Hotel
- Wicklow Wolf Brewing Co
- Green Ocean Coffee
- A Stitch in Time
- DBSC
- Dingle Sailing Club
- ISORA
- Captain Nigel Collins, Harbour Master, Dingle

National YC d2d Organising Committee

Adam Winkelmann - Chairman

Con Murphy - RO

Olivier Prouveur - NYC Sailing Manager

Grainne Ryan, Suzie Barry

Peter Ryan - ISORA

Peter Sherry – NYC Commodore

Susan Spain – NYC Sailing Secretary



Billy Naughton Ltd
Est. 1968

WICKLOW
WOLF
BREWING CO.



GREEN OCEAN
COFFEE



"A STITCH IN TIME"
EMBROIDERERS LTD.



Wish you a good race



Billy Naughton Ltd
Est. 1968

WICKLOW
WOLF
BREWING CO.



GREEN OCEAN
SAILING



"A STITCH IN TIME"
EMBROIDERERS LTD.