



## Marine Notice No. 79 of 2022

*Notice to all Shipowners, Fishing Vessel Owners, Agents, Shipmasters, Skippers, Fishers,  
Yachtsmen and Seafarers*

**UCD DAS Survey  
in the southern Irish Sea off the Wexford/Wicklow  
coast**

### 1. Notice of Activity

The Department of Transport has been advised that the Research survey TC22016 will be carried out in the southern Irish Sea off the Wexford/Wicklow coast by University College Dublin from **30 November 2022** to **9 December 2022**, subject to weather and operational constraints.

The aim of this research project is to test novel low impact marine sensors to aid in better understanding of seabed processes and sub bottom conditions. The approximate location of these research works is given in Appendix 1 and Appendix 2 below. The appendices detail the primary site location at Arklow Bank as well as alternative locations off the east and south Wexford coast which may be used depending on conditions at the time of the survey.

### 2. Details of Vessel

The survey will be conducted by the *R.V. Tom Crean* (Callsign: **EIYX3**). The vessel will display appropriate lights and signals. Within the defined areas, the vessel will be undertaking deployment of equipment and operation of acoustic sources during daylight hours, and sparker and multi-beam acoustic operations during the night. All operations will be carried out in accordance with safe operating practices and MMO procedures and cognisant of fishing gear. All surface equipment will display appropriate lighting whilst deployed. As the vessel will be limited in its ability to manoeuvre at times when undertaking operations, other vessels are kindly requested to keep a wide berth.

### 3. Contact Details

Enquiries regarding the contents of this Marine Notice or any other relevant matters should be directed to:

Andrew Trafford, Chief Scientist, Irish Centre for Research in Applied Geosciences, UCD  
Tel: +353897053344 or Email: [andrew.trafford@icrag-centre.org](mailto:andrew.trafford@icrag-centre.org)

Mariners are also asked to note that a wind turbine went on fire last month in the location of this planned survey and that there is a radio navigation warning in force. All vessels are requested to keep at least 500 metres clear of the turbine.

All mariners are reminded of their responsibilities under the **International Collision Regulations** and of [Marine Notice No. 17 of 2007](#), which gives general advice in relation to the activities of vessels engaged in survey work for hydrographic, seismic, fishing research and underwater operations.

The International Regulations for Prevention of Collisions at Sea (COLREGS) are implemented in Irish law by the *Merchant Shipping (Collision Regulations) (Ships and Water Craft on the Water) Order 2012* [S.I. No. 507 of 2012] and the *Signals of Distress (Ships) Rules 2012* [S.I. No.170 of 2012]. [See Marine Notice No. 06 of 2013](#). These Statutory Instruments may be purchased by mail order from Government Publications, Office of Public Works, 52 St. Stephen's Green, Dublin 2. Tel: (01) 6476834/1890-213434. They are also available online at: [www.irishstatutebook.ie](http://www.irishstatutebook.ie)

Note: Marine Notices are issued purely for maritime safety and navigation reasons and should not be construed as conferring rights or granting permissions.

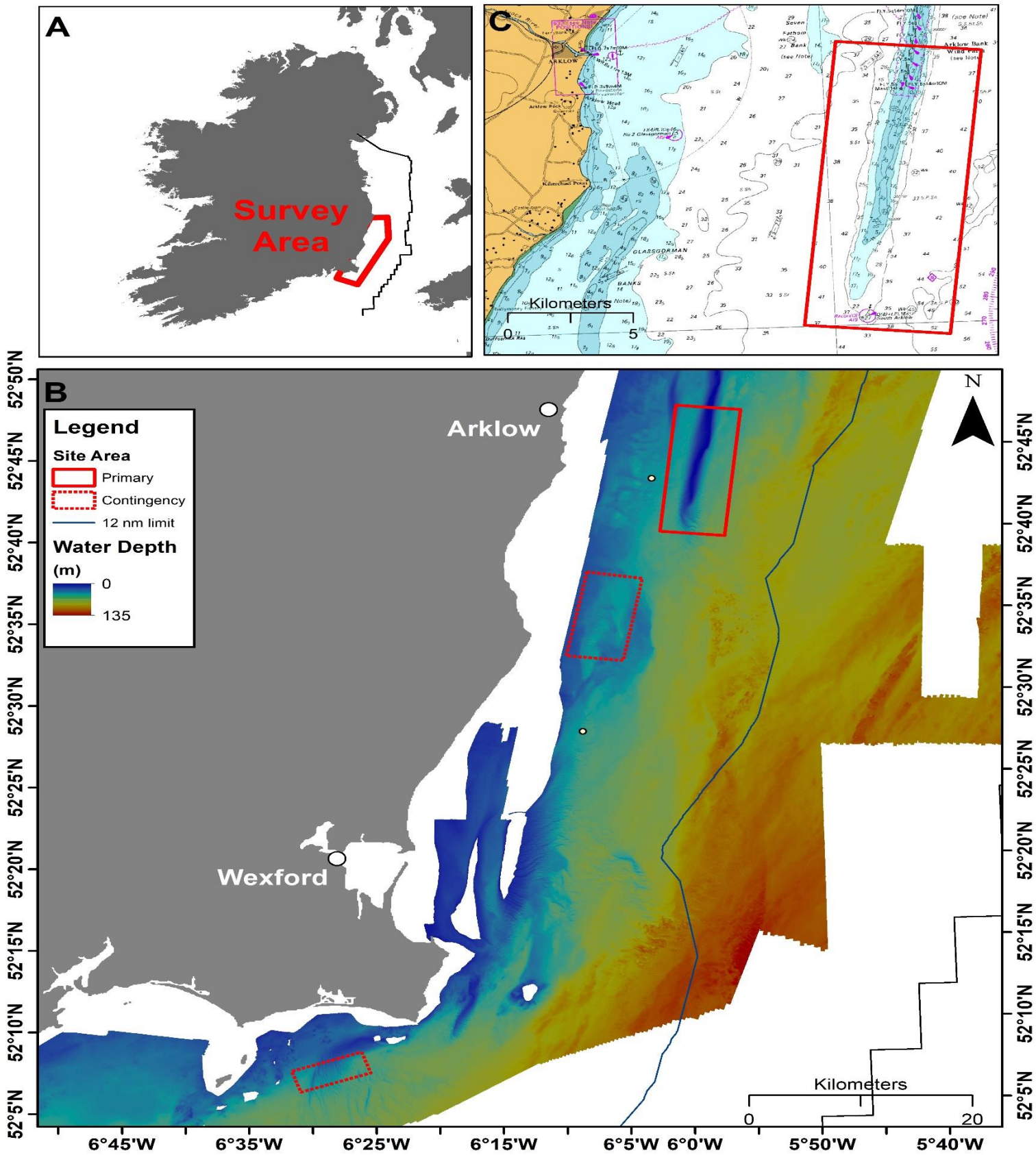
Irish Maritime Administration,  
Department of Transport,  
Leeson Lane, Dublin 2, D02 TR60, Ireland.

21/11/2022

**Encl: Appendix 1. Study Area Extents**  
**Appendix 2. Locations for the Deployed Equipment**

For any technical assistance in relation to this Marine Notice, please contact:  
The Marine Survey Office, email: [MSO@transport.gov.ie](mailto:MSO@transport.gov.ie)  
For general enquiries, please contact the Maritime Safety Policy Division, email:  
[MaritimeSafetyPolicyDivision@transport.gov.ie](mailto:MaritimeSafetyPolicyDivision@transport.gov.ie)  
Written enquiries concerning Marine Notices should be addressed to:  
Dept. of Transport, Maritime Safety Policy Division, Leeson Lane, Dublin 2, D02 TR60, Ireland.  
email: [MarineNotices@transport.gov.ie](mailto:MarineNotices@transport.gov.ie) or visit us at: [www.gov.ie/transport](http://www.gov.ie/transport)

# Appendix 1. Study Area Extents



## Appendix 2. Locations for the Deployed Equipment

The tables below detail the primary site location at Arklow Bank and locations for the deployed equipment, along with two contingency sites. All positions are based on WGS 84 datum.

### Site A – Arklow Bank – Site Limits

Lat	Long
52° 47.56' N	005° 57.32' W
52° 44.01' N	005° 58.09' W
52° 44.19' N	006° 00.30' W
52° 47.74' N	005° 59.53' W

### Deployed Equipment

ID	Description	Latitude	Longitude
1	ADCP	52° 45.46' N	005° 59.28' W
2	ADCP	52° 45.22' N	005° 56.28' W

### Site B – East Wexford - Contingency Site Limits

Lat	Long
52° 37.65' N	006° 07.06' W
52° 37.18' N	006° 02.69' W
52° 32.18' N	006° 04.42' W
52° 32.54' N	006° 08.92' W

### Site C – South Wexford - Contingency Site Limits

Lat	Long
52° 08.51' N	006° 26.03' W
52° 07.22' N	006° 25.35' W
52° 06.11' N	006° 30.88' W
52° 07.40' N	006° 31.56' W