



## Marine Notice No. 05 of 2025

*Notice to all Shipowners, Fishing Vessel Owners, Agents, Shipmasters, Skippers, Fishers, Yachtsmen and Seafarers*

### Hydrographic and Geophysical Surveys Celtic Sea, Atlantic Ocean and Irish Sea

#### 1. Notice of Activity

The Department of Transport has been advised by Geological Survey Ireland (GSI) and the Marine Institute that hydrographic and geophysical survey operations will be undertaken by INFOMAR in the Celtic Sea, Atlantic Ocean, western coastal areas and Irish Sea areas between **2 March 2025** and **31 October 2025**.

#### 2. Location of Planned Operations

**Figure 1** in the Appendix at the end of this Marine Notice depicts the overview of the 2025 INFOMAR survey areas.

RV's Keary, Geo, Mallet, Galtee and Lir are expected to carry out survey operations in three areas, as follows:

- In the **Atlantic Ocean**, West of Counties Galway and Mayo (see Figure 2 in the Appendix).
- An offshore area **NW of Belmullet**, County Mayo and **western coastal areas** stretching from Galway Bay to Malin Head, County Donegal (see Figure 3 in the Appendix).
- It is anticipated that these vessels will also survey in the **Irish Sea** adjacent to the Ireland/UK border from East of County Dublin to East of County Wexford and in coastal areas of County Dublin (see Figure 4 in the Appendix).

The **Atlantic Ocean site** east of the 30 Nm limit is denoted by the purple-coloured hatched area in **Figure 2**. The coordinates of the survey areas NE (near Achill Island) and SW (west of Aran Islands) are as follows:

NE Corner	54° 03.933'N	-009° 28.660'W
SW Corner	52° 57.375'N	-011° 10.786'W

The area **NW of Belmullet**, County Mayo, denoted in purple hatching in **Figure 3**, is bounded by the following coordinates:

NE Corner	55° 28.737'N	-007° 8.775'W
SE Corner	54° 03.938'N	-007° 12.140'W
NW Corner	55° 09.366'N	-010° 26.911'W
SW Corner	54° 02.746'N	-010° 32.286'W

The offshore **Irish Sea area** is denoted in purple hatching in **Figure 4** and bounded by the following coordinates:

NE Corner	53° 20.848'N	-005° 20.170'W
SE Corner	52° 24.172'N	-005° 24.901'W
NW Corner	53° 31.340'N	-005° 26.513'W
SW Corner	52° 10.926'N	-005° 55.970'W

Coastal survey operations may take place from **County Dublin South to Carnsore Point, County Wexford**, and detailed coordinates can be provided if necessary.

RV Tom Crean is expected to carry out survey operations in the **Celtic Sea**, south of the 30 Nm limit, and potentially in the **Atlantic Ocean** west of counties Clare and Galway, west of the 30 Nm limit during the dates outlined above.

Specifically, the RV Tom Crean is expected to carry out survey operations in the Celtic Sea and Atlantic Sea, south of Ireland, within the orange hatched area of **Figure 5** (see Appendix), bounded by the following coordinates:

NE Corner	50° 57.003'N	-009° 04.664'W
SE Corner	49° 20.168'N	-009° 07.346'W
NW Corner	51° 07.372'N	-010° 42.584'W
SW Corner	49° 20.275'N	-011° 13.573'W

The RV Tom Crean will also undertake survey operations in the Atlantic Ocean, west of Ireland, within the orange hatched area of **Figure 6** (see Appendix) bounded by the following coordinates:

North Apex	53° 53.443'N	-011° 08.401'W;
East Apex	53° 03.973'N	-010° 48.711'W;
SE Corner	52° 26.426'N	-011° 08.402'W;
SW Corner	52° 24.917'N	-011° 46.762'W
West 1	52° 39.136'N	-011° 58.853'W;
West 2	53° 16.033'N	-011° 53.498'W

**Inshore survey operations** will potentially take place **anywhere along the coast** between NW County Mayo and Malin Head, County Donegal. Detailed coordinates of these areas can be provided if necessary.

### 3. Details of Survey Vessels

The Marine Institute will operate the below vessels:

- RV Tom Crean (**call sign EIYX3**)
- RV Celtic Explorer (**call sign EIGB**)

These vessels will display appropriate lights and markers and will be listening on VHF channel 16 throughout the course of the survey. The vessels will be towing a magnetometer sensor with a single cable of up to 200 metres in length and a Moving Vessel Profiler cable of variable length up to a maximum of 200 metres.

Geological Survey Ireland (GSI) will operate five vessels listed below:

- RV Keary (**call sign EI-GO-9**)
- RV Geo (**call sign EI-DK-6**)
- RV Mallet (**call sign EI-SN-9**)
- RV Lir (**call sign EI-HI-2**)
- RV Galtee (**call sign EI-2F-G**)

The vessels will display appropriate lights and markers and will be listening on VHF channel 16 throughout the course of the survey.

### 4. Purpose of Survey

The INFOMAR Programme (Integrated Mapping for the Sustainable Development of Ireland's Marine Resource) is a jointly managed seabed mapping initiative between the Geological Survey Ireland and the Marine Institute, funded by Department of the Environment, Climate and Communications. Expanding upon its operational predecessor, the Irish National Seabed Survey, it has a focus on three sub-programme areas, namely:

- Data Acquisition, Management and Interpretation;
- Data Exchange and Integration;
- Value Added Exploitation.

Covering some 125,000 square kilometres of underwater territory, INFOMAR will produce integrated mapping products covering the bathymetry, backscatter and substrate type.

### 5. Additional Information

INFOMAR charts and information on a bay basis can be found on its website <http://www.infomar.ie>. Images, Bathymetry, Backscatter, Shaded Relief, and Classification pdfs are available.

INFOMAR offshore & Geological Survey Ireland onshore digital data can be downloaded via <https://jetstream.gsi.ie/iwdds/index.html>.

## 6. Contact Details

Enquiries or supporting information in relation to the above-mentioned programme should be directed by email to [info@infomar.ie](mailto:info@infomar.ie), or by phone to Marine Institute at **+353 91 387200** or Geological Survey Ireland at **+353 1 678 2896**.

**All mariners are reminded of their responsibilities under the International Collision Regulations and of [Marine Notice No. 17 of 2007](#), which gives general advice in relation to the activities of vessels engaged in survey work for hydrographic, seismic, fishing research and underwater operations.**

The International Regulations for Prevention of Collisions at Sea (COLREGS) are implemented in Irish law by the *Merchant Shipping (Collision Regulations) (Ships and Water Craft on the Water) Order 2012* [S.I. No. 507 of 2012] and the *Signals of Distress (Ships) Rules 2012* [S.I. No.170 of 2012]. [See Marine Notice No. 06 of 2013](#). These Statutory Instruments may be purchased by mail order from Government Publications, Office of Public Works, Mountshannon Road, Dublin, D08 XA06; Tel: (046) 9423100. They are also available online at: [www.irishstatutebook.ie](http://www.irishstatutebook.ie).

**Note:** Marine Notices are issued purely for maritime safety and navigation reasons and should not be construed as conferring rights or granting permissions.

Irish Maritime Administration,  
Department of Transport,  
Leeson Lane, Dublin 2, D02 TR60, Ireland.

23/01/2025

Encl: Appendix: Figures 1-6 of Survey Areas

For any technical assistance in relation to this Marine Notice, please contact:  
The Marine Survey Office, email: [MSO@transport.gov.ie](mailto:MSO@transport.gov.ie)  
For general enquiries, please contact the Maritime Safety Policy Division, email:  
[MaritimeSafetyPolicyDivision@transport.gov.ie](mailto:MaritimeSafetyPolicyDivision@transport.gov.ie)  
Written enquiries concerning Marine Notices should be addressed to:  
Dept. of Transport, Maritime Safety Policy Division, Leeson Lane, Dublin 2, D02 TR60, Ireland.  
email: [MarineNotices@transport.gov.ie](mailto:MarineNotices@transport.gov.ie) or visit us at: [www.gov.ie/transport](http://www.gov.ie/transport)

Figure 1: Overview of 2025 INFOMAR survey areas.

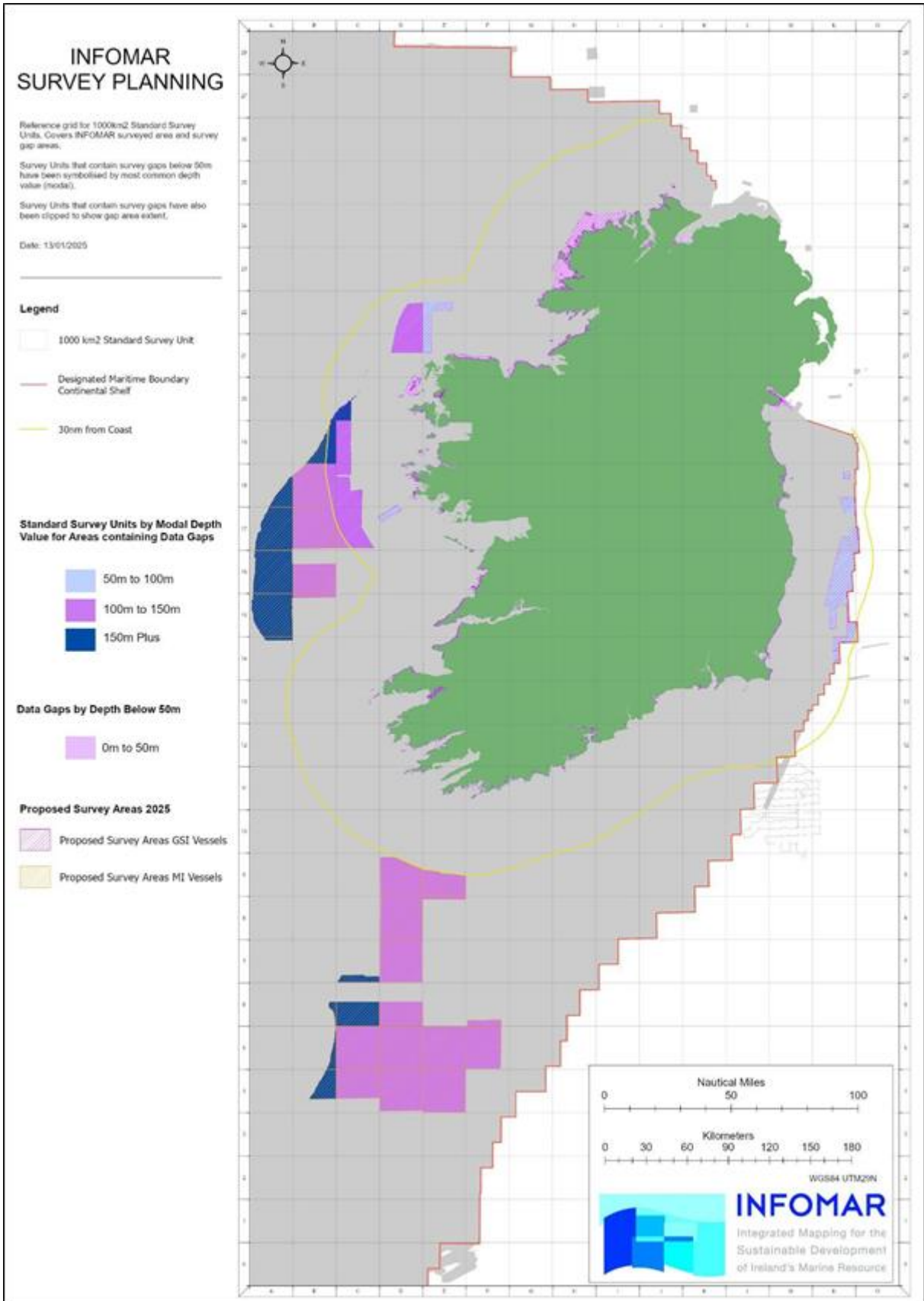


Figure 2: RV's Keary, Geo, Mallet, Galtee and Lir Atlantic Ocean survey areas (Purple)

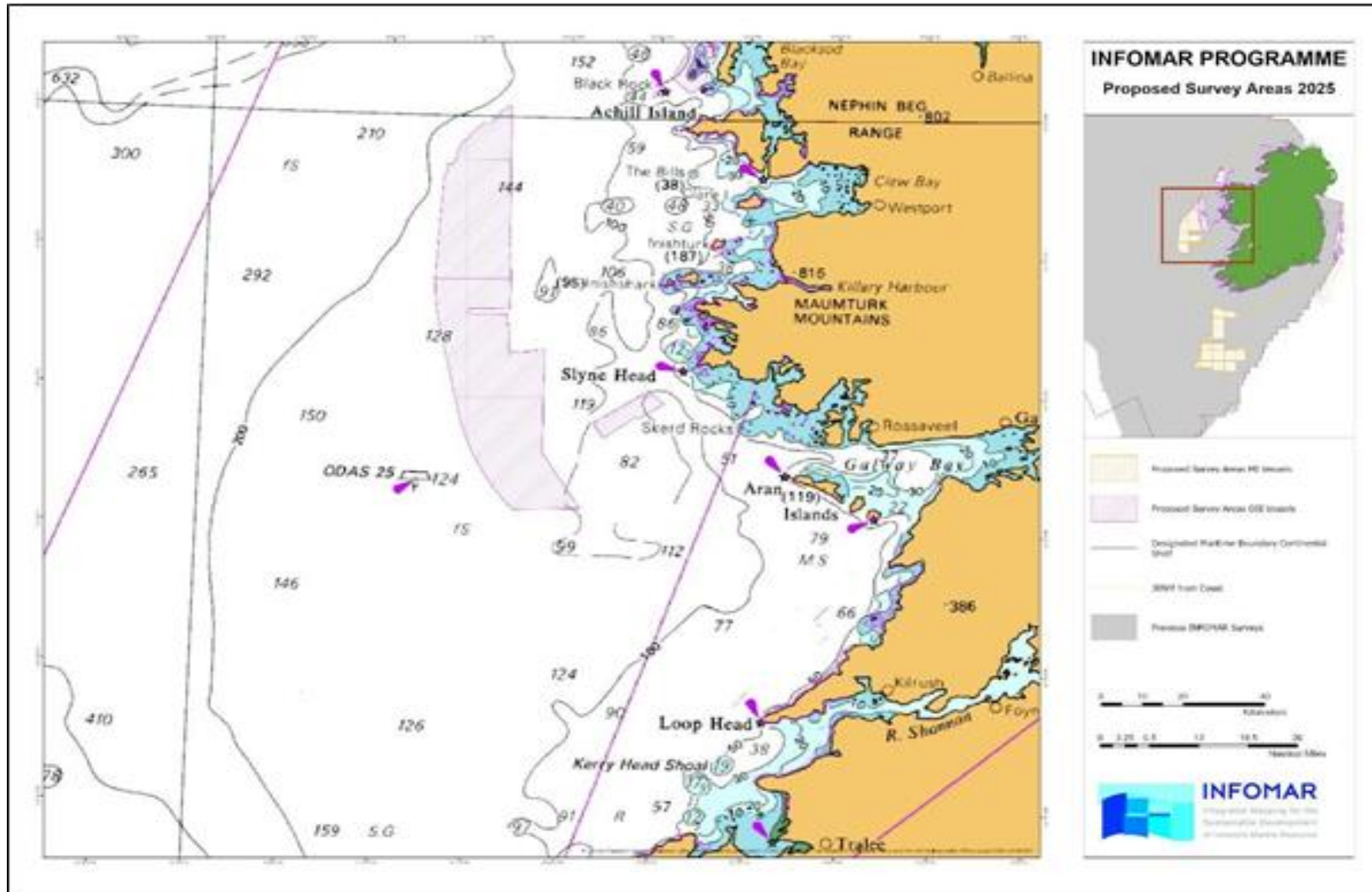


Figure 3: RV's Keary, Geo, Mallet, Galtee and Lir Atlantic Ocean North survey areas (Purple).

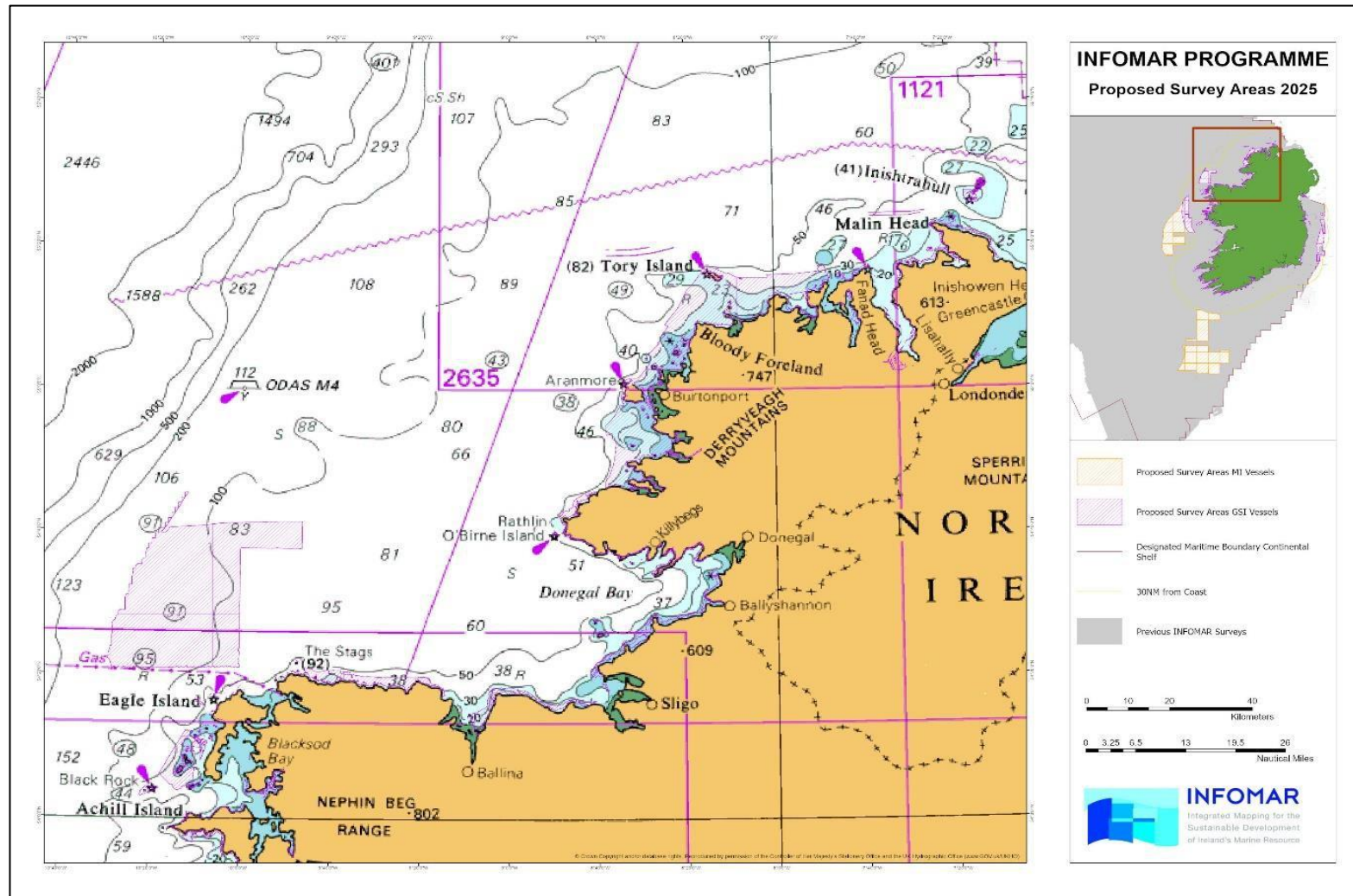


Figure 4: RV's Keary, Geo, Mallet, Galtee and Lir Irish Sea survey areas (Purple).

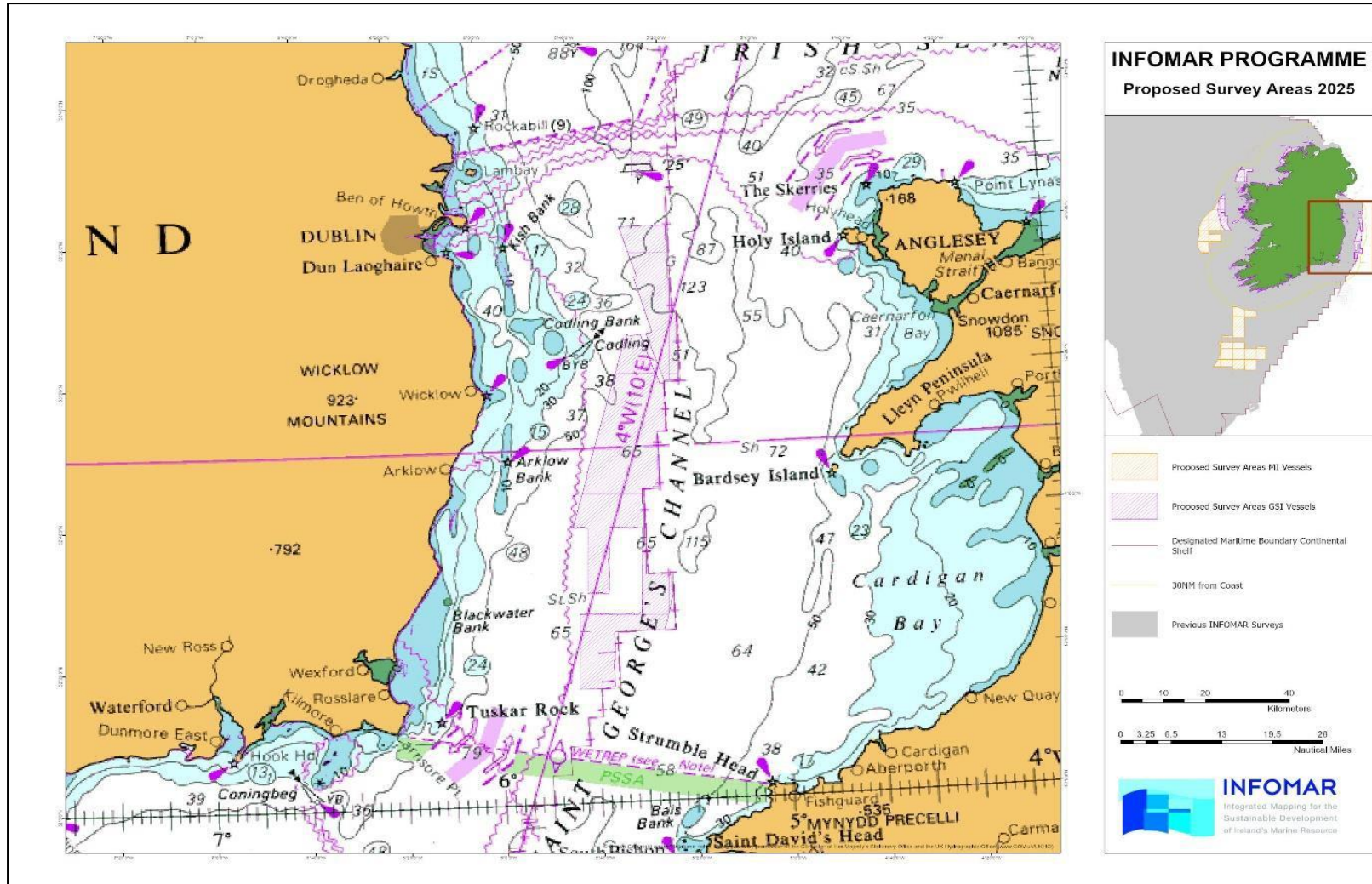


Figure 5: RV Tom Crean, Celtic Sea survey area (Orange).

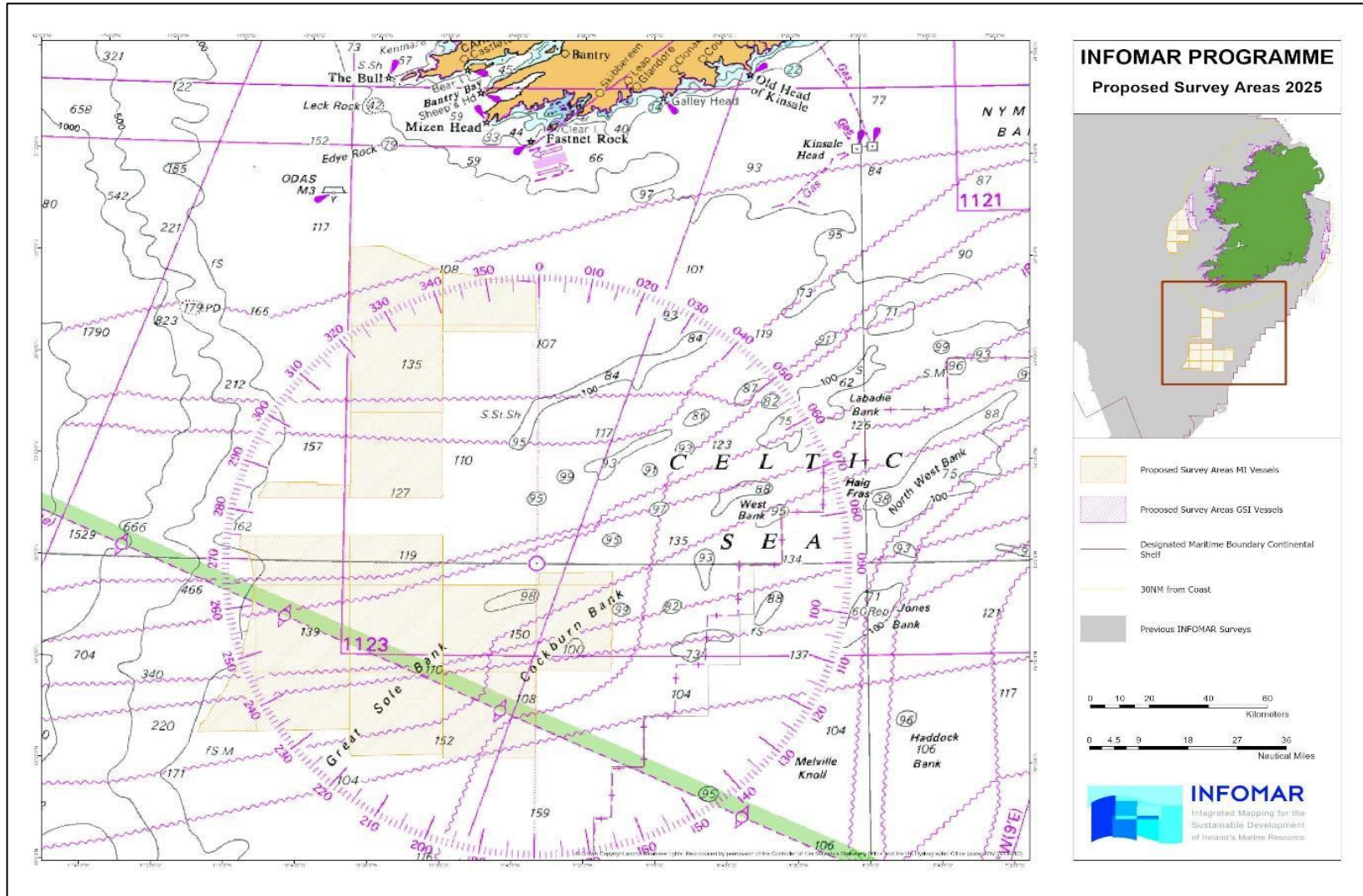


Figure 6: RV Tom Crean Atlantic Ocean survey area (Orange).

