



Marine Notice No. 20 of 2026

Notice to all Shipowners, Fishing Vessel Owners, Agents, Shipmasters, Skippers, Fishers,
Yachtsmen and Seafarers

Arklow Bank Habitat Restoration Video Survey

1. Notice of Activity

The Department of Transport has been notified by Natural Power on behalf of the Marine Institute that they will undertake a targeted survey in the Irish Sea off the coast of Co. Wicklow. The survey will involve the deployment of drop-down video equipment at various survey locations at Arklow Bank. The survey work will take place over **two days** between **25 May and 29 May 2026**, subject to weather and operational constraints.

2. Location of Activity

The indicative survey locations are as per the coordinates in the table below and in the map in the Appendix of this Marine Notice:

Station	Transect Start		Transect End	
	Latitude N	Longitude W	Latitude N	Longitude W
1	52°53.503' N	005°58.648' W	52°53.455' N	005°58.696' W
2	52°53.354' N	005°57.380' W	52°53.306' N	005°57.428' W
3	52°52.977' N	005°57.953' W	52°52.929' N	005°58.001' W
4	52°52.022' N	005°59.165' W	52°51.974' N	005°59.213' W
5	52°50.202' N	006°1.099' W	52°50.154' N	006°1.147' W
6	52°49.944' N	005°56.284' W	52°49.897' N	005°56.332' W
7	52°49.219' N	005°54.634' W	52°49.171' N	005°54.682' W
8	52°48.844' N	005°58.067' W	52°48.796' N	005°58.115' W
9	52°48.676' N	005°56.554' W	52°48.628' N	005°56.602' W
10	52°48.512' N	005°56.935' W	52°48.464' N	005°56.983' W
11	52°48.499' N	005°56.186' W	52°48.451' N	005°56.234' W
12	52°48.194' N	005°56.974' W	52°48.146' N	005°57.022' W
13	52°48.197' N	005°56.326' W	52°48.149' N	005°56.374' W
14	52°48.141' N	005°54.963' W	52°48.093' N	005°55.011' W
15	52°47.807' N	005°58.252' W	52°47.759' N	005°58.300' W
16	52°47.854' N	005°57.074' W	52°47.806' N	005°57.122' W
17	52°47.818' N	005°56.383' W	52°47.770' N	005°56.431' W
18	52°47.498' N	005°57.211' W	52°47.451' N	005°57.259' W
19	52°47.390' N	005°56.520' W	52°47.343' N	005°56.568' W
20	52°47.192' N	005°57.271' W	52°47.144' N	005°57.318' W

21	52°47.128' N	005°56.569' W	52°47.080' N	005°56.617' W
22	52°47.148' N	005°54.911' W	52°47.100' N	005°54.959' W
23	52°46.918' N	005°58.564' W	52°46.870' N	005°58.612' W
24	52°46.868' N	005°57.355' W	52°46.820' N	005°57.403' W
25	52°46.811' N	005°56.653' W	52°46.763' N	005°56.701' W
26	52°46.529' N	005°57.486' W	52°46.481' N	005°57.534' W
27	52°46.499' N	005°56.759' W	52°46.451' N	005°56.807' W
28	52°46.367' N	005°57.206' W	52°46.319' N	005°57.254' W
29	52°46.136' N	005°54.750' W	52°46.088' N	005°54.798' W
30	52°43.731' N	005°56.065' W	52°43.683' N	005°56.113' W
31	52°42.772' N	006°0.476' W	52°42.724' N	006°0.524' W
Turbine sampling locations				
Turbine	Latitude N	Longitude W		
1	52°46.4885' N	005°57.1595' W		
2	52°46.8181' N	005°57.0600' W		
3	52°47.1474' N	005°56.9370' W		
4	52°47.4801' N	005°56.8604' W		
5	52°47.8098' N	005°56.7001' W		
6	52°48.1482' N	005°56.7089' W		
7	52°48.4819' N	005°56.6349' W		

3. Details of Vessels

The survey will be conducted by the following vessels:

- “Fionn Mac Cumhail” (Call Sign: EIA3049)
- “Rós Áine” (Call Sign: EIZG5)

The vessel will display appropriate lights and signals. Mariners are advised to keep continuous watch on VHF radio channel 16 when navigating the area.

4. Contact Details

Enquiries regarding the contents of this Marine Notice, and any other relevant matters, should be directed to:

- Cormac MacDonagh
Email: cormacma@naturalpower.com

All mariners are reminded of their responsibilities under the International Collision Regulations and of [Marine Notice No. 17 of 2007](#), which gives general advice in relation to the activities of vessels engaged in survey work for hydrographic, seismic, fishing research and underwater operations.

The International Regulations for Prevention of Collisions at Sea (COLREGS) are implemented in Irish law by the *Merchant Shipping (Collision Regulations) (Ships and Water Craft on the Water) Order 2012* (S.I. No. 507 of 2012) and the *Signals of Distress (Ships) Rules 2012* (S.I. No.170 of 2012). [See Marine Notice No. 06 of 2013](#). These Statutory Instruments may be purchased by mail order from Government Publications, Office of Public

Works, Mountshannon Road, Dublin, D08 XA06 Tel: (046) 9423100. They are also available online at: www.irishstatutebook.ie.

Note: Marine Notices are issued purely for maritime safety and navigation reasons and should not be construed as conferring rights or granting permissions.

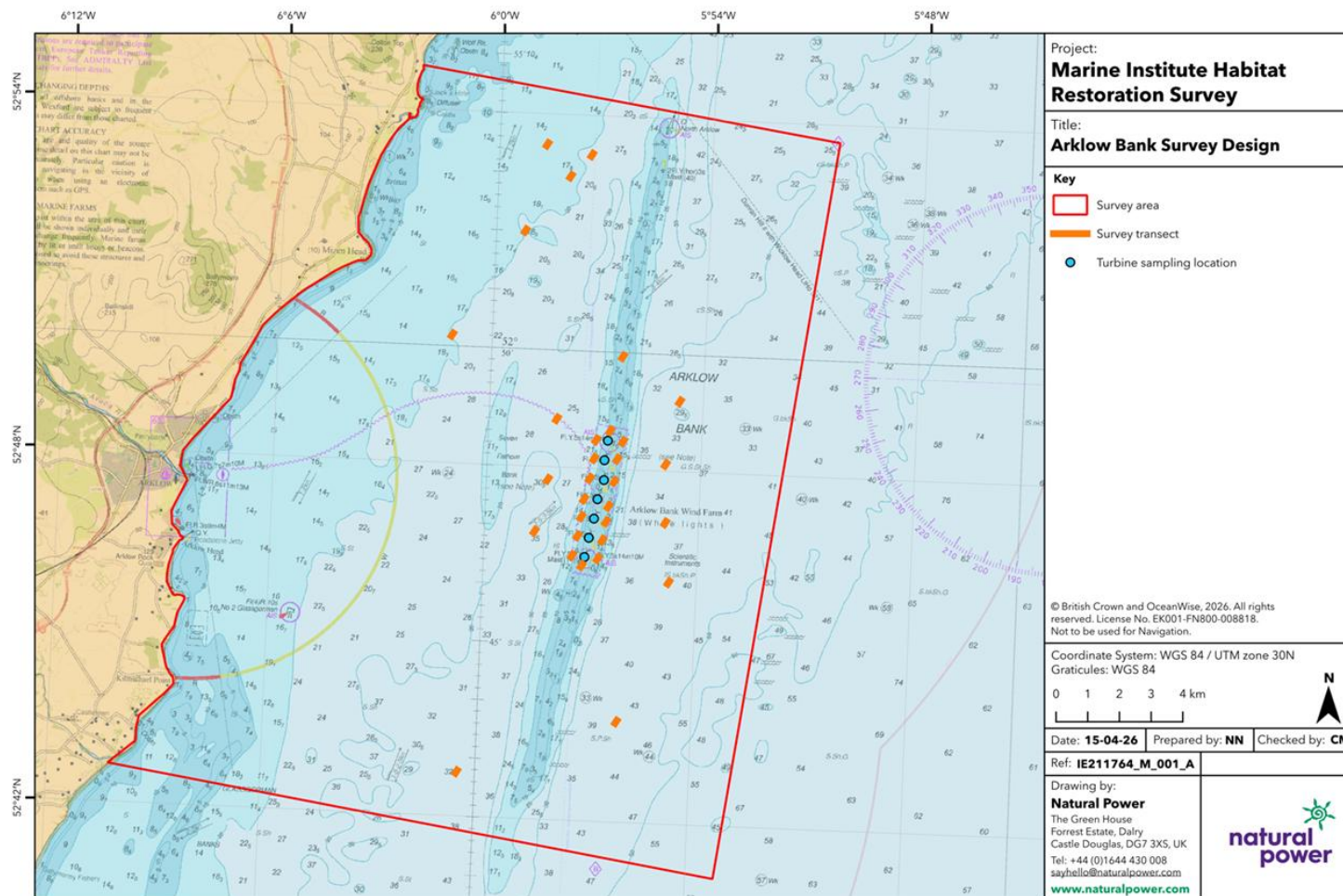
Irish Maritime Administration,
Department of Transport,
Leeson Lane, Dublin 2, D02 TR60, Ireland.

20/04/2026

Appendix: Map of Survey Locations

For any technical assistance in relation to this Marine Notice, please contact:
The Marine Survey Office, email: MSO@transport.gov.ie.
For general enquiries, please contact the Maritime Safety Policy Division, email:
MaritimeSafetyPolicyDivision@transport.gov.ie.
Written enquiries concerning Marine Notices should be addressed to:
Dept. of Transport, Maritime Safety Policy Division, Leeson Lane, Dublin 2, D02 TR60, Ireland.
email: MarineNotices@transport.gov.ie or visit us at: www.gov.ie/transport.

Appendix: Map of Survey Locations



Notes: a) Information on this plan is directly reproduced from digital and other material from different sources. Minor discrepancies may therefore occur. Where further clarification is considered necessary, this is noted through the use of text boxes on the plan itself. b) For the avoidance of doubt and unless otherwise stated: 1. This plan should be used for identification purposes only, unless otherwise stated in accompanying documentation. 2. The Natural Power Consultants Limited accepts no responsibility for the accuracy of data supplied by third parties. 3. The Natural Power Consultants Limited accepts no liability for any use which is made of this plan by a party other than its client. No third party who gains access to this plan shall have any claim against The Natural Power Consultants Limited in respect of its contents.