



Marine Notice No. 47 of 2025

*Notice to all Shipowners, Fishing Vessel Owners, Agents, Shipmasters, Skippers, Fishers,
Yachtsmen and Seafarers*

Celtic Interconnector Project Southeast Coast of Ireland Cable Lay and Support Vessel Operations

1. Notice of Activity

The Department of Transport has been advised by Nexans that Van Oord will be performing cable laying activities on behalf of Nexans for the Celtic Interconnector Designated Activity Company (CIDAC) as part of the Celtic Interconnector Project. The vessel will arrive in the area on 01 August 2025, subject to operational and weather constraints.

The cable will be formed of a bundle of two cables and one fibre optic cable. The vessel will only be responsible for the laying of the cable bundle on the seabed. Additionally, a 500m of Fiber Optic Cable will be separated out at point KP94 within the project approved corridor following the completion of cable laying.

The Department of Transport has also been advised that Sea Source Offshore will perform support vessel operations on behalf of Nexans as part of the above works. The activities will be carried out along the entire planned route of the Celtic Interconnector Project offshore cable route off the southeast coast of Ireland as shown in Appendix 3 to this Marine Notice. The support vessels will be mobilised according to cable lay campaign progress with an estimated arrival into the area on 01 August 2005 for an expected duration of 17 weeks.

2. Location of Activity

The activities will be conducted within the cable corridor extending +/-1000 metres either side of cable route centreline. The cable centreline waypoints are provided in Appendix 1 to this Marine Notice and a map of the Celtic Interconnector Project in the Irish EEZ is available in Appendix 2 to this Marine Notice. The initial support vessel sectors are given in Appendix 4 to this Marine Notice. However, the sectors may change during cable lay operations and protection operations.

3. Details of Vessels

The cable laying operations will be conducted by the vessel **“Calypso” (Call Sign PDNV)**.

The support vessels are as follows (subject to change):

- **“Resolute” (Call Sign MBND5)**
- **“Haulbowline” (Call Sign MEZW9)**
- **“Star of Hope” (Call Sign MKDN2)**
- **“Karima” (Call Sign MPKV5)**
- **“Defender” (Call Sign MMKB9)**
- **“Jason II” (Call Sign MJFY4)**
- **“Lapwing” (Call Sign 2DFK)**

Additional support vessels that may be used at a later date are:

- **“Gleaner” (Call Sign MGGH9)**
- **“Star of Faith” (Call Sign MMSL)**

It is requested that anybody having prior knowledge of potentially submerged or moored objects on the seabed within the area of operations, which could form a hazard to the vessel/equipment, should contact Van Oord at the details provided in section 4.

During the operations the vessels will keep a listening watch on VHF channel 16 and will actively transmit an Automatic Identification System (AIS) signal. The vessels will broadcast daily, and at shorter intervals as may be required by passing traffic, the vessel position, operations information, and planned operations for the next twenty-four hours.

4. Contact Details

Enquiries regarding the contents of this Marine Notice, or any other relevant matter, should be directed to Van Oord at:

Van Oord		
Operations Director	Saskia Rijtema	
	Mob: +31 6 5008 4828	Saskia.rijtema@vanoord.com
Project Manager	Rick Jansen	
	Mob: + 31 6 5434 6894	Rick.jansen@vanoord.com
Operations Manager	Rik Lammes	
	Mob: + 31 6 5135 3620	Rik.lammes@vanoord.com
QHSE Coordinator	Joan Danner	
	Mob: +31 6 1500 9939	Joan.danner@vanoord.com

General: Van Oord, Schaardijk 211, 3063 NH Rotterdam, The Netherlands.

Ph: +31 88 826 0000 info@vanoord.com

Sea Source Offshore		
Duty	24/7	
	+44 (0)28 4176 2855 office hours	offshore@seasource.com
	+44 (0)7709 423506 outside office hours	
Designated Person Ashore	Davey Hill – Head of Business Development	
	+44 (0)7709 423506	davey@seasource.com

All mariners are reminded of their responsibilities under the International Collision Regulations and of [Marine Notice No. 17 of 2007](#), which gives general advice in relation to the activities of vessels engaged in survey work for hydrographic, seismic, fishing research and underwater operations.

The International Regulations for Prevention of Collisions at Sea (COLREGS) are implemented in Irish law by the *Merchant Shipping (Collision Regulations) (Ships and Water Craft on the Water) Order 2012* [S.I. No. 507 of 2012] and the *Signals of Distress (Ships) Rules 2012* [S.I. No.170 of 2012]. [See Marine Notice No. 06 of 2013](#). These Statutory Instruments may be purchased by mail order from Government Publications, Office of Public Works, Mountshannon Road, Dublin, D08 XA06 Tel: (046) 9423100. They are also available online at: www.irishstatutebook.ie.

Note: Marine Notices are issued purely for maritime safety and navigation reasons and should not be construed as conferring rights or granting permissions.

Irish Maritime Administration,
Department of Transport,
Leeson Lane, Dublin 2, D02 TR60, Ireland.

28/07/2025

Appendix 1: Cable Lay Waypoints
Appendix 2: Celtic Interconnector Project in Irish EEZ
Appendix 3: Support Vessel Sectors Map
Appendix 4: Support Vessel Sectors KP Indicators

For any technical assistance in relation to this Marine Notice, please contact:
The Marine Survey Office, email: MSO@transport.gov.ie.

For general enquiries, please contact the Maritime Safety Policy Division, email:
MaritimeSafetyPolicyDivision@transport.gov.ie.

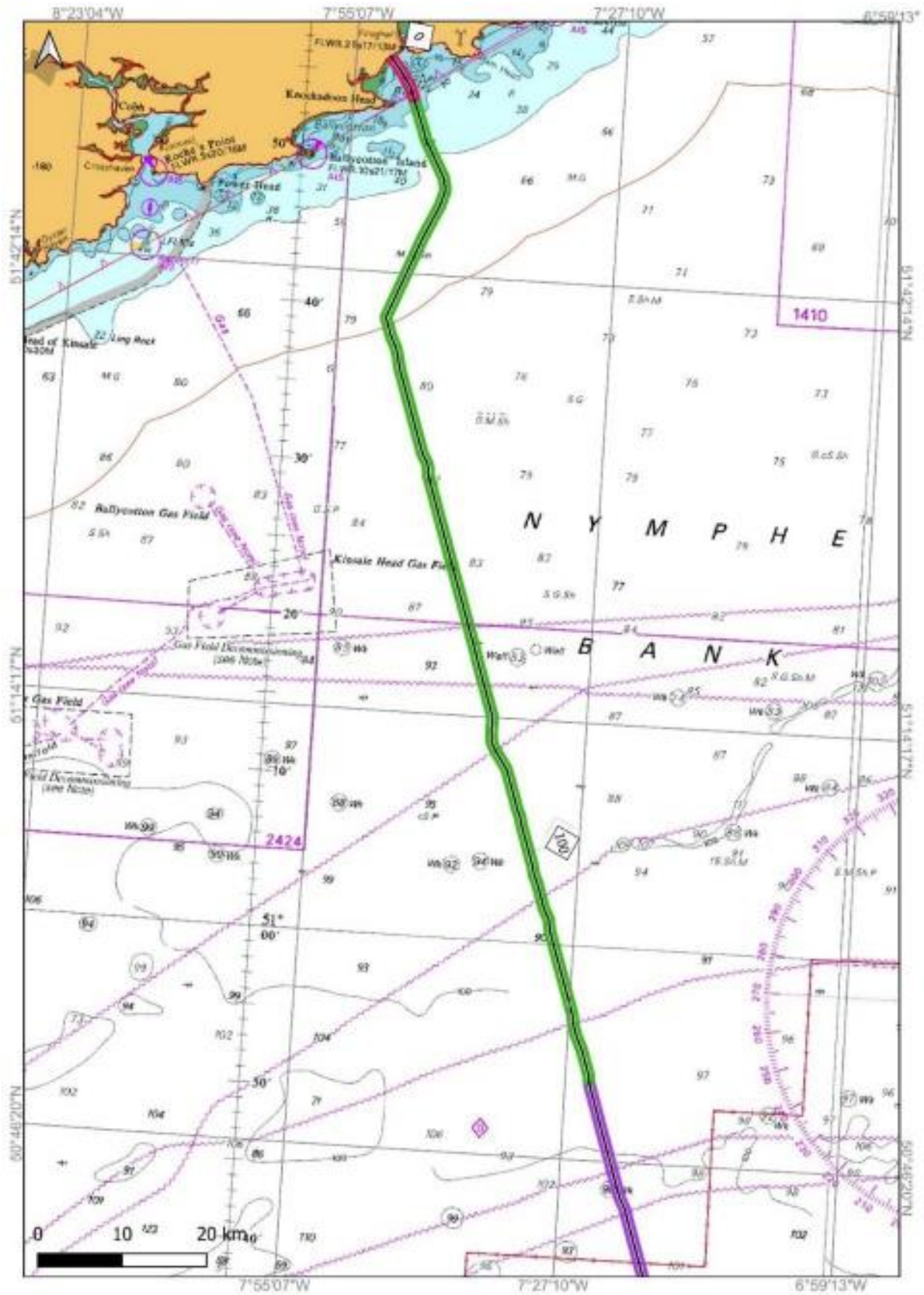
Written enquiries concerning Marine Notices should be addressed to:
Dept. of Transport, Maritime Safety Policy Division, Leeson Lane, Dublin 2, D02 TR60, Ireland.
email: MarineNotices@transport.gov.ie or visit us at: www.gov.ie/transport.

Appendix 1: Cable Lay Waypoints

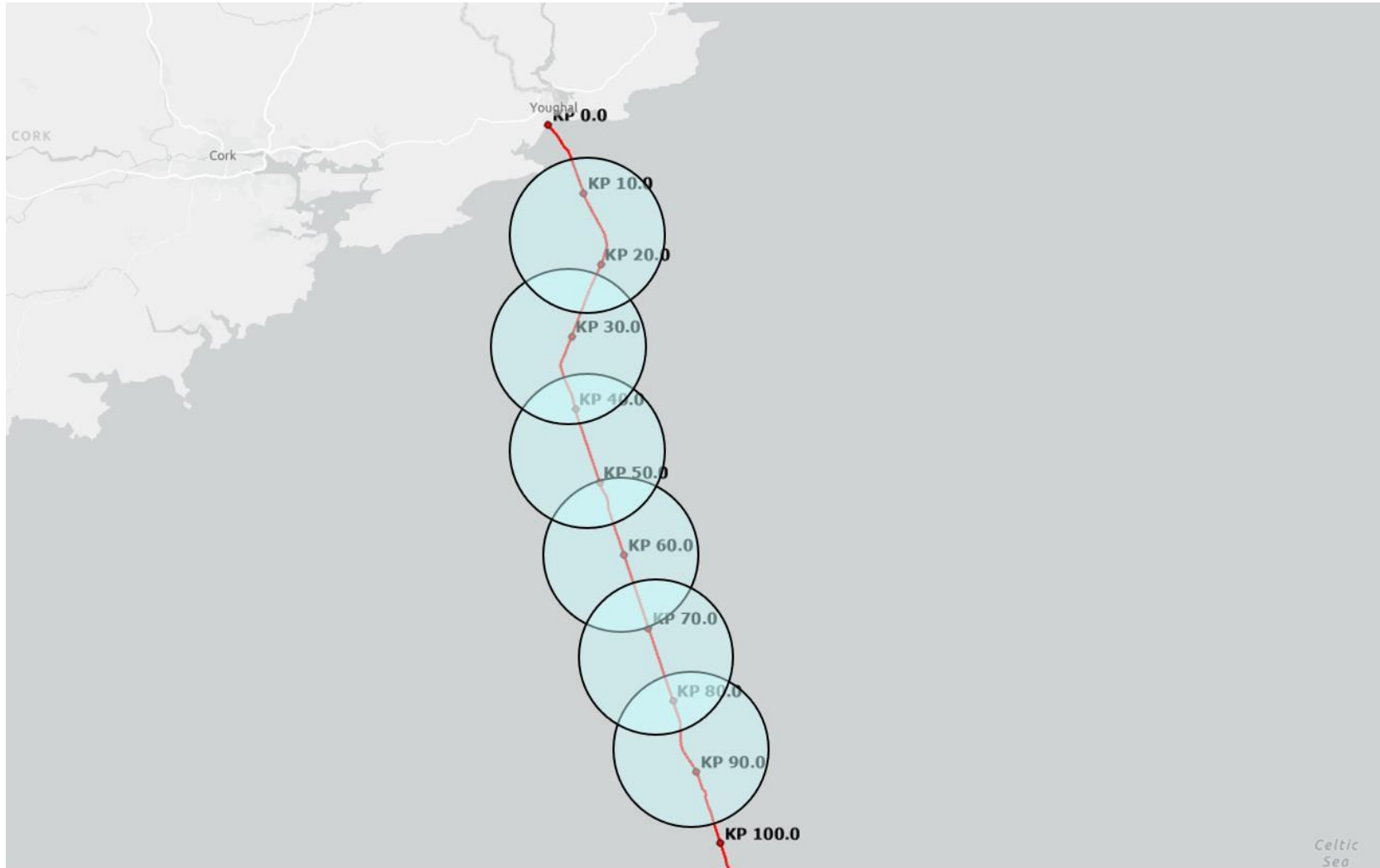
KP	WGS 84 Coordinates	
	Latitude	Longitude
9.44	51° 51' 50.59" N	007° 47' 56.81" W
10	51° 51' 20.36" N	007° 47' 38.25" W
11	51° 50' 49.69" N	007° 47' 22.16" W
12	51° 50' 21.31" N	007° 46' 57.22" W
13	51° 49' 52.82" N	007° 46' 32.64" W
14	51° 49' 24.55" N	007° 46' 7.38" W
15	51° 48' 56.42" N	007° 45' 41.63" W
16	51° 48' 27.7" N	007° 45' 17.71" W
17	51° 47' 55.99" N	007° 45' 7.22" W
18	51° 47' 24.28" N	007° 45' 10.31" W
19	51° 46' 53.34" N	007° 45' 25.61" W
20	51° 46' 23.15" N	007° 45' 43.89" W
21	51° 45' 53.51" N	007° 46' 4.82" W
22	51° 45' 24.24" N	007° 46' 27.08" W
23	51° 44' 54.89" N	007° 46' 49.05" W
24	51° 44' 24.95" N	007° 47' 8.69" W
25	51° 43' 54.89" N	007° 47' 27.97" W
26	51° 43' 24.69" N	007° 47' 46.74" W
27	51° 42' 54.51" N	007° 48' 5.55" W
28	51° 42' 24.3" N	007° 48' 24.26" W
29	51° 41' 54.11" N	007° 48' 43.02" W
30	51° 41' 23.87" N	007° 49' 1.6" W
31	51° 40' 53.61" N	007° 49' 20.03" W
32	51° 40' 23.52" N	007° 49' 39.22" W
33	51° 39' 53.79" N	007° 49' 59.63" W
34	51° 39' 23.45" N	007° 50' 17.31" W
35	51° 38' 52.47" N	007° 50' 2.41" W
36	51° 38' 21.81" N	007° 49' 45.86" W
37	51° 37' 52.16" N	007° 49' 25.23" W
38	51° 37' 23.01" N	007° 49' 2.75" W
39	51° 36' 51.81" N	007° 48' 49.23" W
40	51° 36' 20.34" N	007° 48' 37.04" W
41	51° 35' 49.22" N	007° 48' 22.94" W
42	51° 35' 18.61" N	007° 48' 6.1" W
43	51° 34' 47.99" N	007° 47' 49.3" W
44	51° 34' 17.18" N	007° 47' 33.41" W
45	51° 33' 46.79" N	007° 47' 15.62" W
46	51° 33' 16.0" N	007° 46' 59.6" W
47	51° 32' 45.41" N	007° 46' 42.68" W
48	51° 32' 14.84" N	007° 46' 25.64" W
49	51° 31' 43.99" N	007° 46' 10.23" W

50	51° 31' 13.43" N	007° 45' 53.11" W
51	51° 30' 43.25" N	007° 45' 34.76" W
52	51° 30' 15.42" N	007° 45' 8.29" W
53	51° 29' 44.26" N	007° 44' 55.7" W
54	51° 29' 12.43" N	007° 44' 48.32" W
55	51° 28' 41.79" N	007° 44' 31.63" W
56	51° 28' 11.19" N	007° 44' 14.75" W
57	51° 27' 40.56" N	007° 43' 58.03" W
58	51° 27' 10.05" N	007° 43' 40.8" W
59	51° 26' 39.29" N	007° 43' 24.73" W
60	51° 26' 8.62" N	007° 43' 8.24" W
61	51° 25' 37.94" N	007° 42' 51.72" W
62	51° 25' 7.28" N	007° 42' 35.17" W
63	51° 24' 36.58" N	007° 42' 18.74" W
64	51° 24' 5.89" N	007° 42' 2.3" W
65	51° 23' 35.28" N	007° 41' 45.5" W
66	51° 23' 4.55" N	007° 41' 29.29" W
67	51° 22' 33.83" N	007° 41' 12.99" W
68	51° 22' 3.13" N	007° 40' 56.58" W
69	51° 21' 32.58" N	007° 40' 39.55" W
70	51° 21' 1.84" N	007° 40' 23.35" W
71	51° 20' 31.24" N	007° 40' 6.52" W
72	51° 20' 0.69" N	007° 39' 49.45" W
73	51° 19' 29.92" N	007° 39' 33.52" W
74	51° 18' 59.31" N	007° 39' 16.74" W
75	51° 18' 28.69" N	007° 39' 0.0" W
76	51° 17' 57.86" N	007° 38' 44.45" W
77	51° 17' 27.27" N	007° 38' 27.6" W
78	51° 16' 56.65" N	007° 38' 10.84" W
79	51° 16' 26.11" N	007° 37' 53.75" W
80	51° 15' 55.5" N	007° 37' 37.64" W
81	51° 15' 24.7" N	007° 37' 22.15" W
82	51° 14' 54.14" N	007° 37' 5.19" W
83	51° 14' 23.38" N	007° 36' 49.2" W
84	51° 13' 51.12" N	007° 36' 47.1" W
85	51° 13' 18.76" N	007° 36' 46.11" W
86	51° 12' 46.57" N	007° 36' 42.14" W
87	51° 12' 16.97" N	007° 36' 21.96" W
88	51° 11' 49.77" N	007° 35' 54.03" W
89	51° 11' 23.34" N	007° 35' 24.45" W
90	51° 10' 55.62" N	007° 34' 58.19" W
91	51° 10' 25.02" N	007° 34' 41.4" W
92	51° 09' 54.32" N	007° 34' 25.08" W
93	51° 09' 29.03" N	007° 33' 58.95" W
94	51° 08' 58.11" N	007° 33' 54.31" W

Appendix 2: Celtic Interconnector Project in Irish EEZ



Appendix 3: Support Vessel Sectors Map



Appendix 4: Support Vessel Sectors – KP indicators

GV Section	KP start	KP stop
# 1	10	24
# 2	24	38
# 3	38	52
# 4	52	66
# 5	66	80
# 6	80	94