



Marine Notice No. 10 of 2026

Notice to all Shipowners, Fishing Vessel Owners, Agents, Shipmasters, Skippers, Fishers, Yachtsmen and Seafarers

Celtic Interconnector Project Geophysical and UXO Surveys Ireland

1. Notice of Activity

The Department of Transport has been notified by Nexans that Green Rebel will perform geophysical/unexploded ordnance (UXO) surveys as part of the Celtic Interconnector Project. The surveys will be located along the planned route of the Celtic Interconnector Project offshore cable. The operations will start on **20 February 2026** and last for **21 days**, weather subject to operational and weather constraints.

2. Location of Activity

The surveys will be conducted within the cable corridor extending +/- 500 metres each side of planned cable route at the following points: KP9 to KP12, KP12, KP325, KP57 and sections of laid cable from KP16 to KP94. The relevant waypoints are provided in Tables 1 to 10 below. Further information and maps of the survey areas are available in the Appendices to this Marine Notice below.

Table 1: Geophysical Survey Area Buffer Waypoints at KP9 to KP12

Point	LAT (WGS84)	LONG (WGS84)
1	51°48.49'N	7°46.21'W
2	51°51.06'N	7°48.32'W
3	51°51.48'N	7°48.78'W
4	51°51.81'N	7°48.73'W
5	51°52.12'N	7°48.44'W
6	51°52.30'N	7°48.10'W
7	51°52.40'N	7°48.31'W
8	51°52.41'N	7°47.77'W
9	51°52.30'N	7°47.31'W
10	51°52.08'N	7°47.57'W
11	51°51.91'N	7°47.39'W
12	51°51.70'N	7°47.28'W

13	51°51.14'N	7°47.01'W
14	51°49.07'N	7°44.79'W

Table 2: Geophysical and UXO Survey Area Buffer Waypoints at KP12

Point	LAT (WGS84)	LONG (WGS84)
1	51°50.63'N	7°48.18'W
2	51°51.12'N	7°46.65'W
3	51°49.50'N	7°47.20'W
4	51°49.98'N	7°45.65'W

Table 3: Geophysical Survey Area Buffer Waypoints at KP35

Point	LAT (WGS84)	LONG (WGS84)
1	51°38.95'N	7°51.00'W
2	51°39.30'N	7°49.35'W
3	51°37.93'N	7°50.43'W
4	51°38.28'N	7°48.78'W

Table 4: RoV GVI Area Buffer Waypoints at KP57

Point	LAT (WGS84)	LONG (WGS84)
1	51°28.13'N	7°45.12'W
2	51°28.50'N	7°43.50'W
3	51°26.58'N	7°44.28'W
4	51°26.93'N	7°42.66'W

Table 5: Backfilling MEBS & SSS Survey

Point	LAT (WGS84)	LONG (WGS84)
1	51°48.60'N	7°46.38'W
2	51°48.83'N	7°44.63'W
3	51°47.52'N	7°46.01'W
4	51°47.77'N	7°44.22'W

Table 6: Backfilling MEBS & SSS Survey

Point	LAT (WGS84)	LONG (WGS84)
1	51°46.80'N	7°46.38'W
2	51°46.38'N	7°44.76'W
3	51°45.60'N	7°47.22'W

4	51°45.18'N	7°45.67'W
---	------------	-----------

Table 7: Backfilling MEBS & SSS Survey

Point	LAT (WGS84)	LONG (WGS84)
1	51°32.58'N	7°47.52'W
2	51°32.88'N	7°45.90'W
3	51°31.43'N	7°46.92'W
4	51°31.73'N	7°45.23'W

Table 8: Backfilling MEBS & SSS Survey

Point	LAT (WGS84)	LONG (WGS84)
1	51°20.17'N	7°40.80'W
2	51°20.52'N	7°39.18'W
3	51°19.13'N	7°40.27'W
4	51°19.48'N	7°38.63'W

Table 9: Backfilling MEBS & SSS Survey

Point	LAT (WGS84)	LONG (WGS84)
1	51°16.20'N	7°38.70'W
2	51°16.50'N	7°37.02'W
3	51°09.00'N	7°34.80'W
4	51°09.53'N	7°33.12'W

Table 10: Equipment Calibration Area Buffer Waypoints

Point	LAT (WGS84)	LONG (WGS84)
1	51°51.19'N	7°47.57'W
2	51°51.39'N	7°46.76'W
3	51°50.69'N	7°47.24'W
4	51°50.89'N	7°46.43'W

3. Details of Vessels

The operations will be carried out by the vessel **“Roman Rebel” (Call Sign: 2ICA5)**. During the survey operations, the vessel will keep a listening watch on VHF Channel 16 and will actively transmit an Automatic Identification System (AIS) signal.

4. Contact Details

Enquiries regarding the contents of this Marine Notice, or any other relevant matters, should be directed to Nexans at the following:

Nexans		
Project Manager		
Francois Lesclauze	Mob: +33 7 60 61 10 18	francois.lesclauze@nexans.com
HSE Manager		
Larissa Flausino	Mob: +47 48259834	Larissa.flausino@nexans.com
Fisheries Liaison Officers		
Ross Clifford	Mob: +44 7912 732 902	ross.clifford@brownmay.com
Jonathan Keer	Mob: +44 7850 604 851	jonathan@brownmay.com
Abigail Lewis	Mob: +44 7503 188 887	abigail.lewis@brownmay.com
Green Rebel		
Green Rebel Project Manager		
Cian Ryan	Mob: +353 86 189 5791	cian.ryan@greenrebel.ie

Further information is available on this operation from Nexans:

- **Address:** 4 Allee de l'Arche, 92400 Courbevoie, France
- **Telephone:** +33 178150000

All mariners are reminded of their responsibilities under the International Collision Regulations and of [Marine Notice No. 17 of 2007](#), which gives general advice in relation to the activities of vessels engaged in survey work for hydrographic, seismic, fishing research and underwater operations.

The International Regulations for Prevention of Collisions at Sea (COLREGS) are implemented in Irish law by the *Merchant Shipping (Collision Regulations) (Ships and Water Craft on the Water) Order 2012* (S.I. No. 507 of 2012) and the *Signals of Distress (Ships) Rules 2012* (S.I. No.170 of 2012). [See Marine Notice No. 06 of 2013](#). These Statutory Instruments may be purchased by mail order from Government Publications, Office of Public Works, Mountshannon Road, Dublin, D08 XA06 Tel: (046) 9423100. They are also available online at: www.irishstatutebook.ie.

Note: Marine Notices are issued purely for maritime safety and navigation reasons and should not be construed as conferring rights or granting permissions.

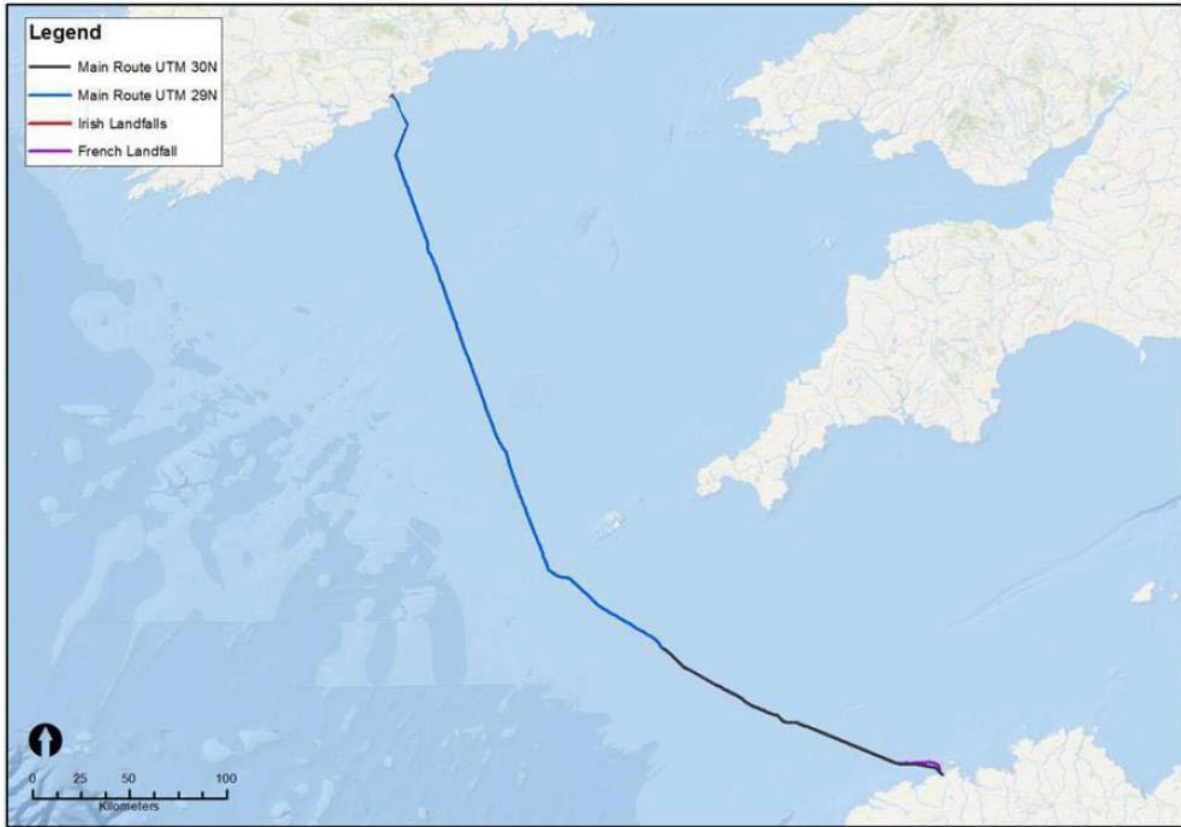
Irish Maritime Administration,
Department of Transport,
Leeson Lane, Dublin 2, D02 TR60, Ireland.

dd/mm/yyyy

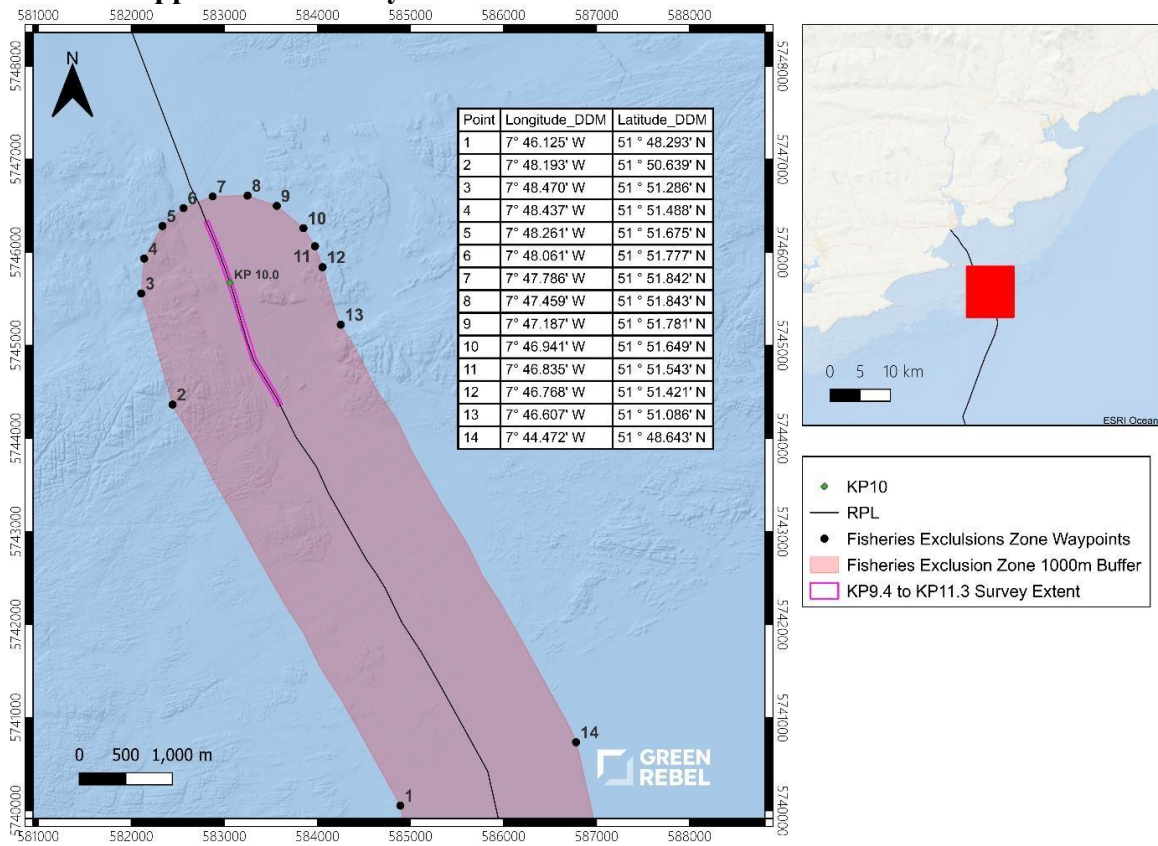
- Appendix 1: Celtic Interconnector Overview
- Appendix 2: Survey area buffer and coordinates from KP9 to KP12
- Appendix 3: Survey area buffer and coordinates at KP12
- Appendix 4: Survey area buffer and coordinates at KP35
- Appendix 5: Survey area buffer and coordinates at KP57
- Appendix 6: Backfilling MEBS & SSS Location
- Appendix 7: Backfilling MEBS & SSS Location
- Appendix 8: Backfilling MEBS & SSS Location
- Appendix 9: Backfilling MEBS & SSS Location
- Appendix 10: Backfilling MEBS & SSS Location

For any technical assistance in relation to this Marine Notice, please contact:
The Marine Survey Office, email: MSO@transport.gov.ie.
For general enquiries, please contact the Maritime Safety Policy Division, email:
MaritimeSafetyPolicyDivision@transport.gov.ie.
Written enquiries concerning Marine Notices should be addressed to:
Dept. of Transport, Maritime Safety Policy Division, Leeson Lane, Dublin 2, D02 TR60, Ireland.
email: MarineNotices@transport.gov.ie or visit us at: www.gov.ie/transport.

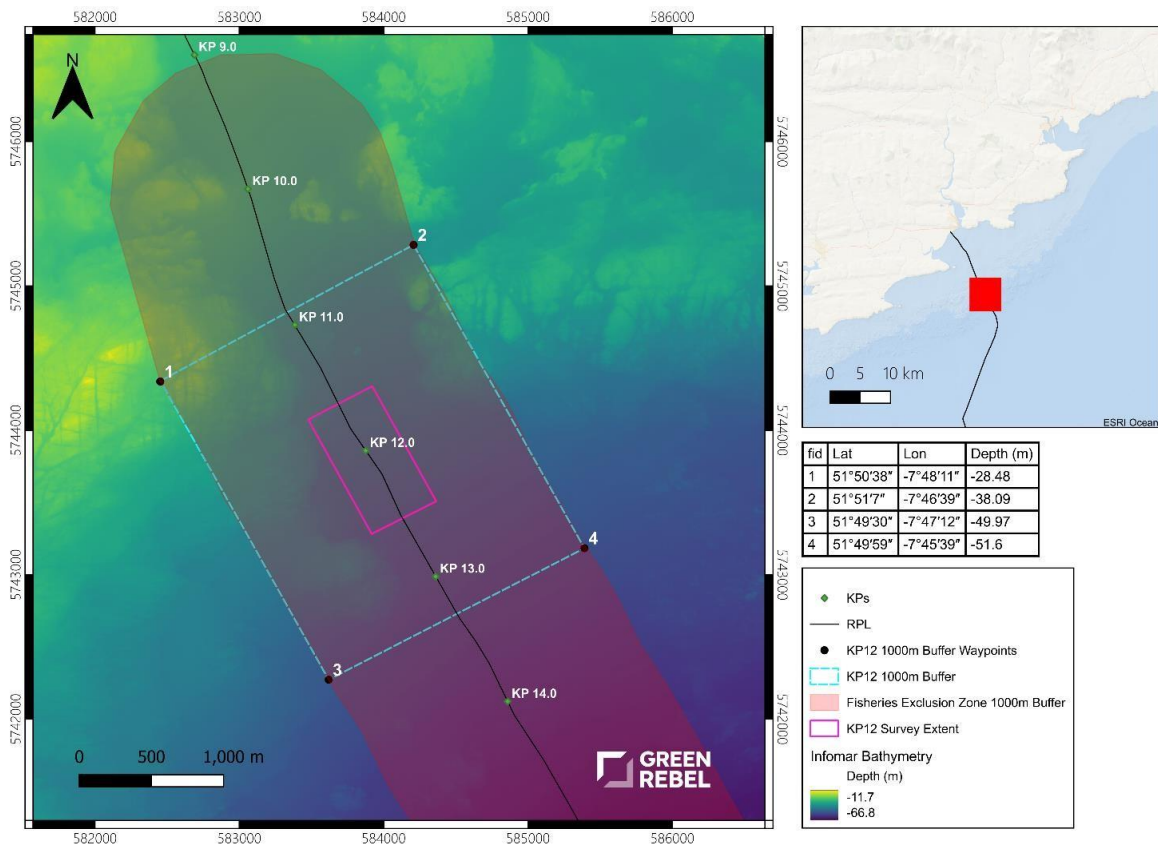
Appendix 1: Celtic Interconnector Overview



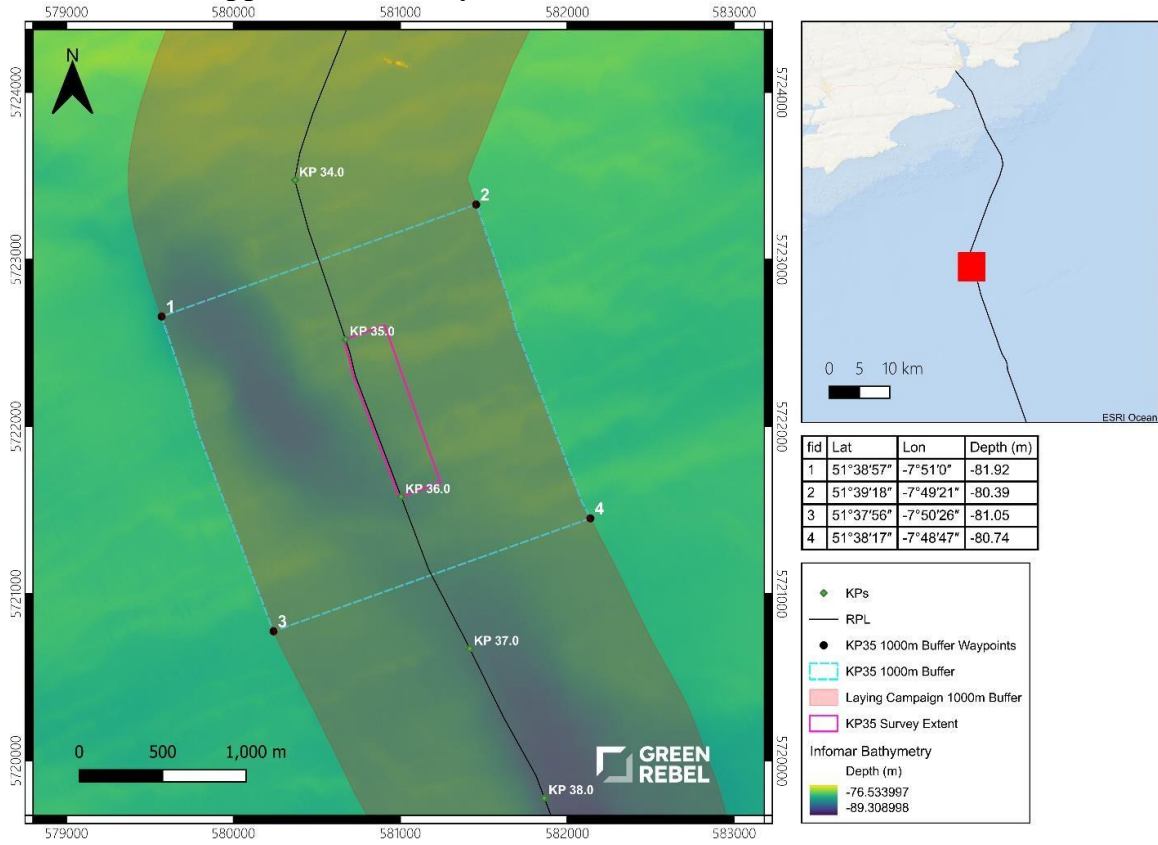
Appendix 2: Survey area buffer and coordinates from KP9 to KP12



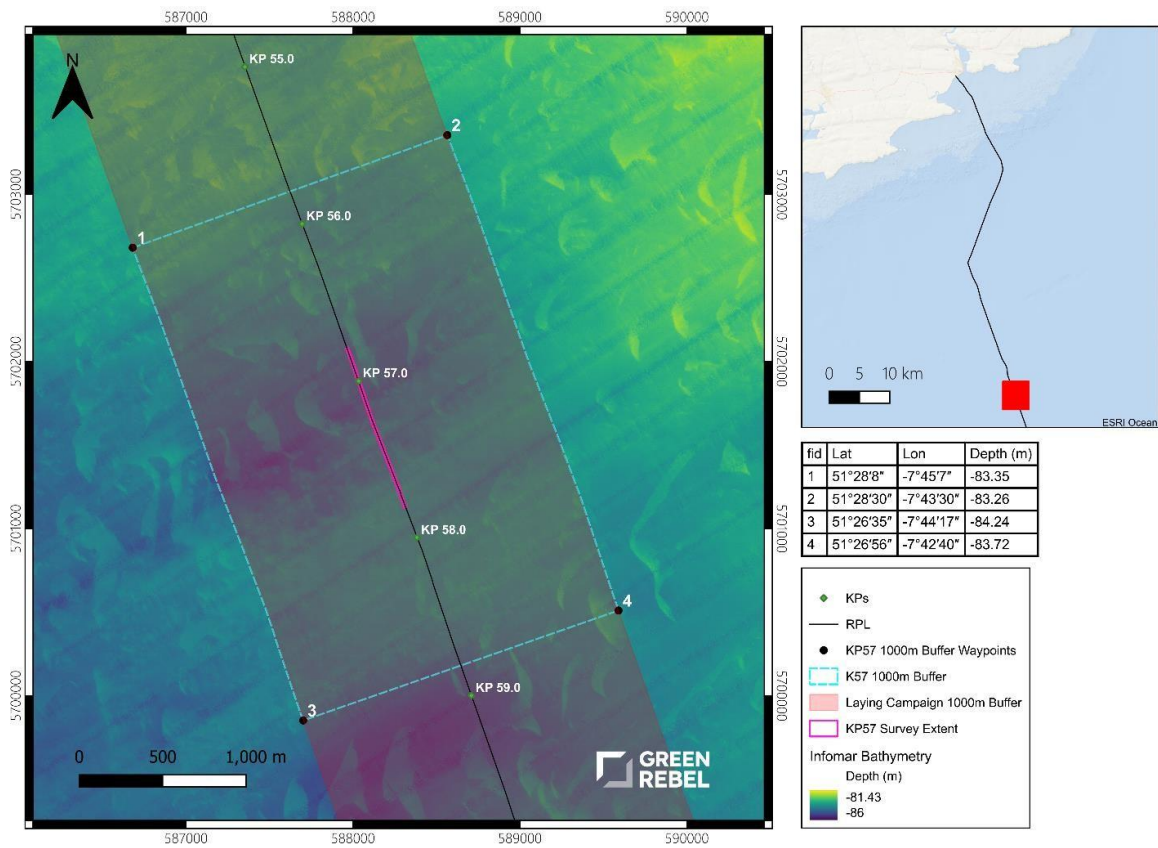
Appendix 3: Survey area buffer and coordinates at KP12



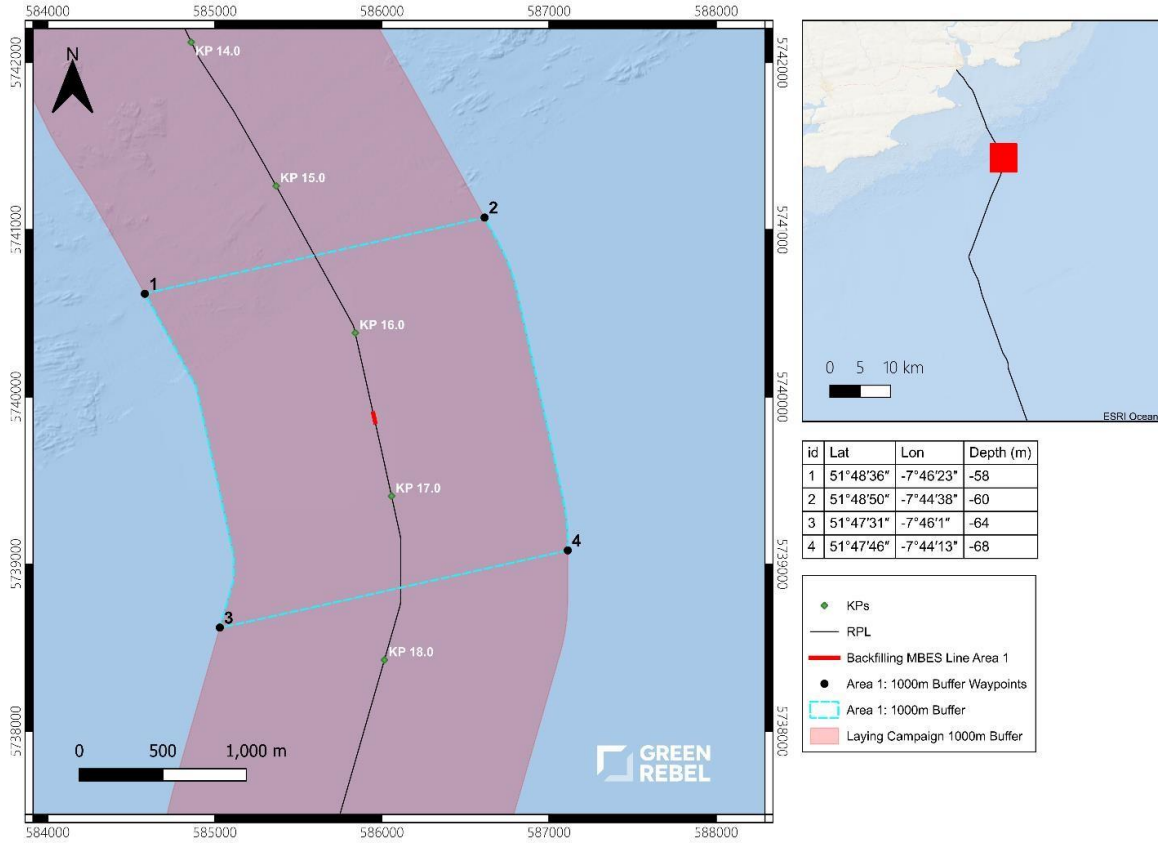
Appendix 4: Survey area buffer and coordinates at KP35



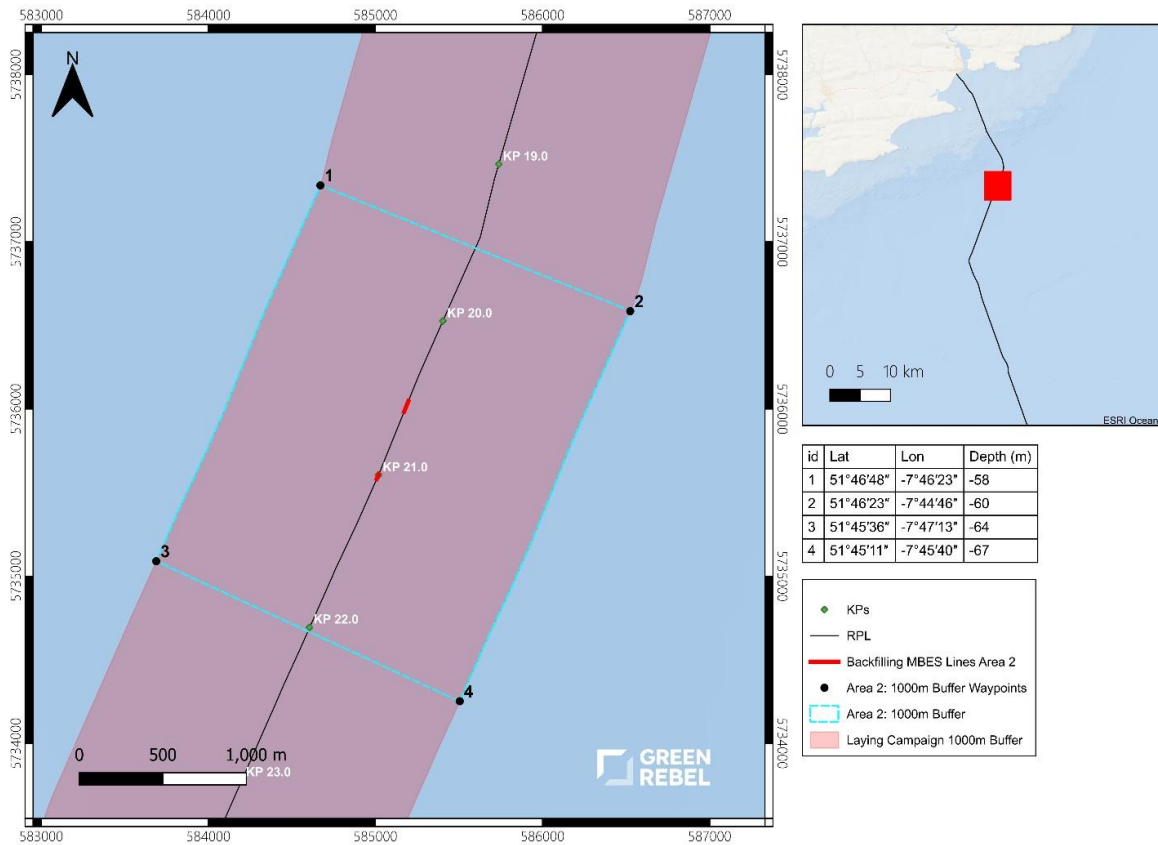
Appendix 5: Survey area buffer and coordinates at KP57



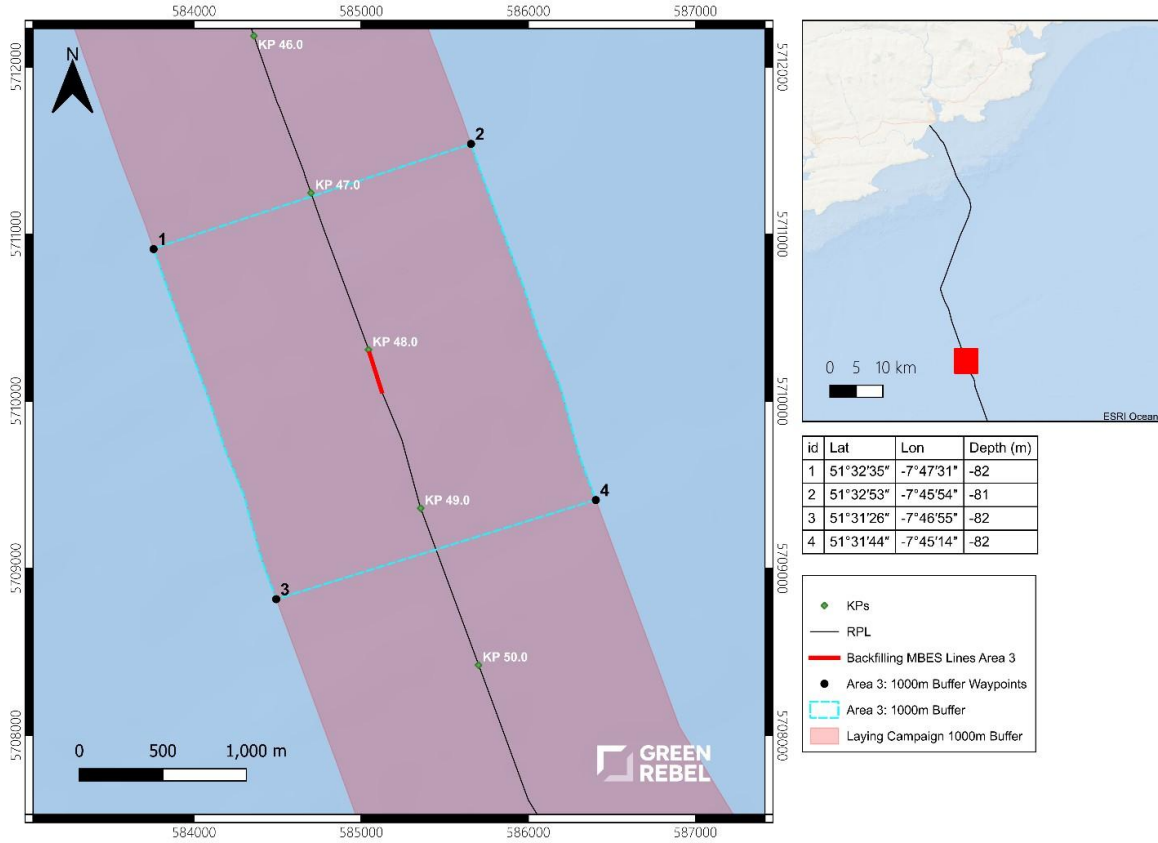
Appendix 6: Backfilling MEBS & SSS Location



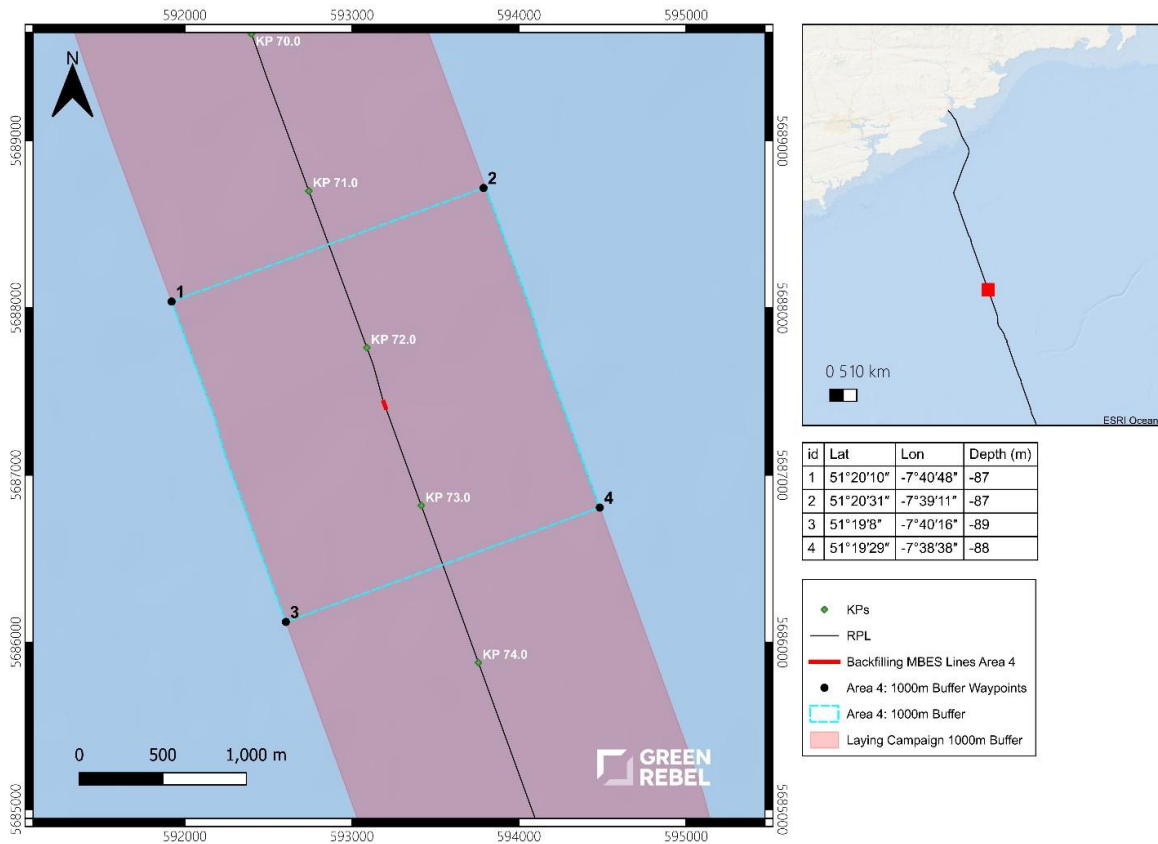
Appendix 7: Backfilling MEBS & SSS Location



Appendix 8: Backfilling MEBS & SSS Location



Appendix 9: Backfilling MEBS & SSS Location



Appendix 10: Backfilling MEBS & SSS Location

