



## Marine Notice No. 17 of 2026

Notice to all Shipowners, Fishing Vessel Owners, Agents, Shipmasters, Skippers, Fishers,  
Yachtsmen and Seafarers

### Geophysical and Geotechnical Survey Off the Coast of Co. Galway

#### 1. Notice of Activity

The Department of Transport has been advised that a geophysical and geotechnical survey will be undertaken by Elettra TLC SpA in the Atlantic Ocean off the coast of Co. Galway, on behalf of Deepsea Fibre Networks Ltd. The survey will begin on **13 April 2026** and will finish on **1 June 2026**, depending on weather and operational constraints.

#### 2. Location of Activity

The geophysical and geotechnical survey will follow a cable route with start and end point locations listed in the table below. Further information on the route positions can be found in the table in Appendix 1 to this Marine Notice with a map of the survey works set out in Appendix 2.

**Table: Start and end points for the works corridor**

Cable Corridors	Starting		Ending	
	Latitude	Longitude	Latitude	Longitude
Works Corridor	53° 12' 51.6374"	9° 08' 49.1883"	48° 31' 34.0455" N	13° 23' 52.6522"

#### 3. Details of Vessel

The survey will be conducted by the **"EXPLORA" (Call Sign: IXWQ)**. The vessel will display appropriate lights and signals. Due to the deployment of towed survey equipment from the vessel for the duration of the survey activities, the survey vessel will be restricted in its ability to manoeuvre and as such other vessels are kindly requested to keep a wide berth.

Vessels are requested to pass at a safe speed and distance and fishing vessels are advised to remain a safe distance from the areas identified - CPA > 1.0 NM. The vessel will maintain a listening watch on VHF Channel 16, mariners are advised to keep continuous watch on this channel when navigating the area. A Marine and

Fisheries Liaison Officer will be available to discuss operations throughout the duration of the survey campaign.

#### 4. Contact Details

Enquiries regarding the contents of this marine notice, and any other relevant matters, should be directed to:

- **Senior Marine Coordinator:**  
Guiseppe Papaluca  
Email: [g.papaluca@elettratl.ie](mailto:g.papaluca@elettratl.ie)
- **Project Manager:**  
Rory Ryan  
Email: [rory@mdmeng.ie](mailto:rory@mdmeng.ie)
- **Fisheries Liaison Officer**  
Peter Tyndall  
Email: [petetyndall@gmail.com](mailto:petetyndall@gmail.com)

**All mariners are reminded of their responsibilities under the International Collision Regulations and of [Marine Notice No. 17 of 2007](#), which gives general advice in relation to the activities of vessels engaged in survey work for hydrographic, seismic, fishing research and underwater operations.**

The International Regulations for Prevention of Collisions at Sea (COLREGS) are implemented in Irish law by the *Merchant Shipping (Collision Regulations) (Ships and Water Craft on the Water) Order 2012* (S.I. No. 507 of 2012) and the *Signals of Distress (Ships) Rules 2012* (S.I. No.170 of 2012). [See Marine Notice No. 06 of 2013](#). These Statutory Instruments may be purchased by mail order from Government Publications, Office of Public Works, Mountshannon Road, Dublin, D08 XA06 Tel: (046) 9423100. They are also available online at: [www.irishstatutebook.ie](http://www.irishstatutebook.ie).

**Note:** Marine Notices are issued purely for maritime safety and navigation reasons and should not be construed as conferring rights or granting permissions.

Irish Maritime Administration,  
Department of Transport,  
Leeson Lane, Dublin 2, D02 TR60, Ireland.

09/04/2026

Appendix 1: Survey Works Corridor Route Position List  
Appendix 2: Survey Works Corridor in the Atlantic Ocean

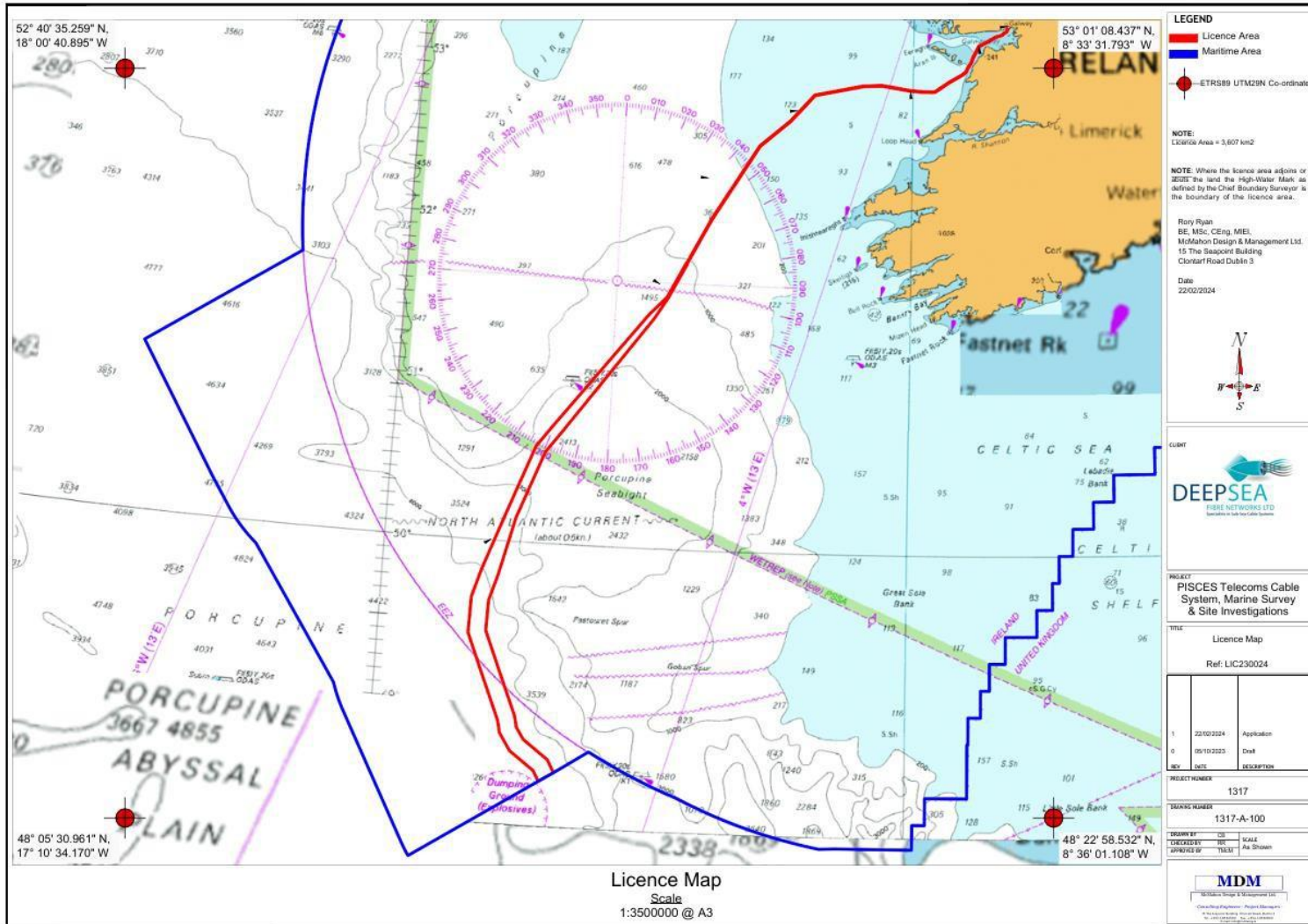
For any technical assistance in relation to this Marine Notice, please contact:  
The Marine Survey Office, email: [MSO@transport.gov.ie](mailto:MSO@transport.gov.ie).  
For general enquiries, please contact the Maritime Safety Policy Division, email:  
[MaritimeSafetyPolicyDivision@transport.gov.ie](mailto:MaritimeSafetyPolicyDivision@transport.gov.ie).  
Written enquiries concerning Marine Notices should be addressed to:  
Dept. of Transport, Maritime Safety Policy Division, Leeson Lane, Dublin 2, D02 TR60, Ireland.  
email: [MarineNotices@transport.gov.ie](mailto:MarineNotices@transport.gov.ie) or visit us at: [www.gov.ie/transport](http://www.gov.ie/transport).

**Appendix 1: Survey Works Corridor Route Position List**

<b>Latitude</b>	<b>Longitude</b>
53° 12' 51.6374" N	9° 08' 49.1883" W
53° 12' 47.8997" N	9° 08' 46.6116" W
53° 12' 39.9944" N	9° 09' 36.0453" W
53° 12' 36.6865" N	9° 08' 38.8823" W
53° 12' 25.4751" N	9° 09' 24.0033" W
53° 11' 00.9566" N	9° 14' 16.2409" W
53° 10' 46.8008" N	9° 14' 03.1758" W
53° 09' 20.8481" N	9° 19' 35.7536" W
53° 09' 08.8661" N	9° 19' 15.7727" W
53° 04' 59.5614" N	9° 23' 20.9374" W
53° 04' 53.2502" N	9° 22' 56.1031" W
53° 03' 15.5134" N	9° 24' 18.3111" W
53° 03' 08.6062" N	9° 23' 53.8215" W
53° 00' 56.0239" N	9° 26' 41.6821" W
53° 00' 48.7213" N	9° 26' 17.6225" W
53° 00' 06.3634" N	9° 27' 14.3740" W
52° 59' 58.7339" N	9° 26' 50.5369" W
52° 59' 49.8140" N	9° 27' 33.0421" W
52° 59' 39.1394" N	9° 27' 12.6426" W
52° 58' 48.5082" N	9° 29' 24.3735" W
52° 58' 35.3813" N	9° 29' 08.4352" W
52° 55' 54.9831" N	9° 37' 39.3236" W
52° 55' 41.3048" N	9° 37' 24.9826" W
52° 54' 21.3250" N	10° 18' 49.5627" W
52° 54' 05.0846" N	10° 18' 51.0571" W
52° 54' 01.5252" N	10° 30' 04.1943" W
52° 53' 45.4284" N	10° 30' 00.7955" W
52° 52' 38.9458" N	10° 01' 23.2071" W
52° 52' 34.7772" N	9° 59' 55.9279" W
52° 52' 22.8686" N	10° 01' 26.4248" W
52° 52' 18.9622" N	9° 46' 17.5769" W
52° 52' 18.6471" N	9° 59' 58.0369" W
52° 52' 16.4627" N	9° 53' 36.8583" W
52° 52' 14.8653" N	9° 48' 10.6320" W
52° 52' 03.0793" N	9° 46' 08.5261" W
52° 52' 00.2869" N	9° 53' 38.0336" W
52° 51' 58.6803" N	9° 48' 09.9457" W
52° 50' 14.2294" N	10° 59' 47.1668" W
52° 49' 59.5201" N	10° 59' 33.0179" W
52° 40' 24.3831" N	11° 14' 08.8948" W
52° 40' 12.8647" N	11° 13' 50.1244" W
52° 30' 46.5738" N	11° 32' 18.7977" W
52° 30' 36.0315" N	11° 31' 58.2790" W

52° 03' 03.2559" N	11° 59' 40.1258" W
52° 02' 55.3974" N	11° 59' 17.1772" W
51° 46' 07.3224" N	12° 13' 51.5378" W
51° 46' 03.6626" N	12° 13' 39.9142" W
51° 45' 56.3420" N	12° 13' 16.6686" W
51° 45' 52.6812" N	12° 13' 05.0465" W
51° 33' 21.3975" N	12° 24' 14.7705" W
51° 33' 04.1614" N	12° 23' 30.6015" W
51° 26' 28.4427" N	12° 34' 31.5841" W
51° 25' 00.4497" N	12° 31' 26.0974" W
50° 42' 54.9242" N	13° 27' 56.2484" W
50° 40' 30.5128" N	13° 22' 49.4965" W
50° 35' 36.5216" N	13° 36' 25.7921" W
50° 33' 39.6285" N	13° 30' 47.9275" W
50° 09' 54.6815" N	13° 51' 25.6644" W
50° 08' 37.1570" N	13° 45' 27.8725" W
49° 48' 59.1051" N	14° 03' 09.5703" W
49° 47' 07.3325" N	13° 53' 35.6169" W
49° 38' 31.1007" N	14° 07' 59.4399" W
49° 37' 29.0694" N	13° 58' 04.5249" W
49° 26' 13.6475" N	13° 58' 33.7124" W
49° 25' 02.2185" N	14° 08' 31.6508" W
49° 11' 54.9773" N	13° 49' 38.1849" W
49° 09' 27.7664" N	13° 58' 45.7494" W
48° 55' 08.1926" N	13° 39' 10.1792" W
48° 53' 13.6017" N	13° 48' 35.0613" W
48° 51' 13.7382" N	13° 37' 55.4916" W
48° 48' 44.1665" N	13° 47' 08.4353" W
48° 46' 46.0106" N	13° 33' 36.5808" W
48° 42' 17.1260" N	13° 40' 53.1282" W
48° 39' 46.3066" N	13° 19' 28.3570" W
48° 35' 26.8473" N	13° 27' 02.4693" W
48° 35' 05.9241" N	13° 15' 40.6602" W
48° 31' 34.0455" N	13° 23' 52.6522" W

## Appendix 2: Survey Works Corridor in the Atlantic Ocean



**LEGEND**

- Licence Area
- Maritime Area
- ETRS89 UTM29N Co-ordinates

**NOTE:**  
LICENCE Area = 3,607 km<sup>2</sup>

**NOTE:** Where the licence area adjoins or intersects the land the High Water Mark as defined by the Chief Boundary Surveyor is the boundary of the licence area.

Rory Ryan  
BE, MSc, CEng, MEI,  
McMahon Design & Management Ltd.  
15 The Seaport Building  
Clontarf Road Dublin 3

Date  
22/02/2024

N  
↑  
W ← E →  
S

**CLIENT**  
  
DEEPSEA  
FIBRE NETWORKS LTD  
Specialists in Sub Sea Cable Systems

**PROJECT**  
PISCES Telecoms Cable System, Marine Survey & Site Investigations

**TITLE**  
Licence Map  
Ref: LIC230024

1	22/10/2024	Application
0	09/10/2023	Draw
REV	DATE	DESCRIPTION

**PROJECT NUMBER**  
1317

**DRAWING NUMBER**  
1317-A-100

DRAWN BY	SR	SCALE
CHECKED BY	TR	AS SHOWN
APPROVED BY	TR	AS SHOWN

**MDM**  
McMahon Design & Management Ltd.  
Specialist Engineers - Project Managers  
Marine Survey - Environmental Services  
Marine Construction - Offshore Services