



Marine Notice No. 10 of 2021

*Notice to all Shipowners, Fishing Vessel Owners, Agents, Shipmasters, Skippers, Fishers,
Yachtsmen and Seafarers*

Celtic Sea & Atlantic Ocean Notice of Hydrographic & Geophysical Surveys

1. Notice of Activity

The Department of Transport has been advised that a hydrographic and geophysical survey operation will be undertaken by INFOMAR in the Celtic Sea and Atlantic Ocean between April and October 2021.

2. The purpose of the Survey

The INFOMAR Programme (Integrated Mapping for the Sustainable Development of Irelands Marine Resource), is a jointly managed seabed mapping initiative between the Geological Survey Ireland and the Marine Institute, funded by Department of Environment, Climate and Communications.

Covering some 125,000 square kilometers of underwater territory, INFOMAR will produce integrated mapping products covering the physical, chemical, and biological features of the seabed.

3. Location and dates of planned operations

On the dates listed below, operations are planned to take place within the following bays, harbours and offshore areas.

Survey Vessel	Current Schedule	Location
RV's Keary, Geo, Lir, Galtee and Mallet (Geological Survey Ireland)	April - October	Celtic Sea, Atlantic Ocean & southwest coast
R.V.Celtic Voyager (Marine Institute)	06/05/2021 – 04/06/2021 (30 days)	Celtic Sea
R.V.Celtic Voyager (Marine Institute)	06/07/2021 – 29/07/2021 (24 days)	Celtic Sea

R.V.Celtic Voyager (Marine Institute)	30/07.2021 – 04/08/2021 (4 days)	Donegal Coast
R.V.Celtic Voyager (Marine Institute)	01/09/2021 – 21/09/2021 (21 days)	Celtic Sea
RV Celtic Explorer (Marine Institute)	21/09/2021 – 06/10/2021 (16 days)	Celtic Sea

Please refer to Annex 1 for an overview of 2021 offshore survey areas.

4. Details of Survey Vessels

The Marine Institute will operate the following two vessels R.V. Celtic Voyager (call sign **EIQM**) and R.V. Celtic Explorer (call sign **EIGB**). These vessels will display appropriate lights and markers. They will be listening on channel 16 throughout the course of the survey. The vessels will be towing a magnetometer sensor with a single cable of up to 200 metres in length and a Moving Vessel Profiler cable of variable length up to a maximum of 200 metres.

Geological Survey Ireland will operate five vessels, they are R.V. Keary (call sign **EI-GO-9**), R.V. Geo (call sign **EI-DK-6**), R.V. Mallet (call sign **EI-SN-9**), R.V. Lir (call sign **EI-HI-2**) and R.V. Galtee (call sign **EI-2F-G**). The vessels will display appropriate lights and markers. The vessels will be listening on channel 16 throughout the course of the survey.

5. Survey Area

5.1: The RV's Celtic Voyager, Keary, Geo, Mallet, Galtee and Lir are expected to carry out survey operations in the northwest Celtic Sea, Atlantic Ocean and the southwest coast stretching from Roaringwater Bay, County Cork to Kilkee, County Clare. Three offshore areas have been selected, two south of Mizen Head and another in the Atlantic Ocean, between Kerry Head and the Aran Islands.

Further information is available in Figure 1.

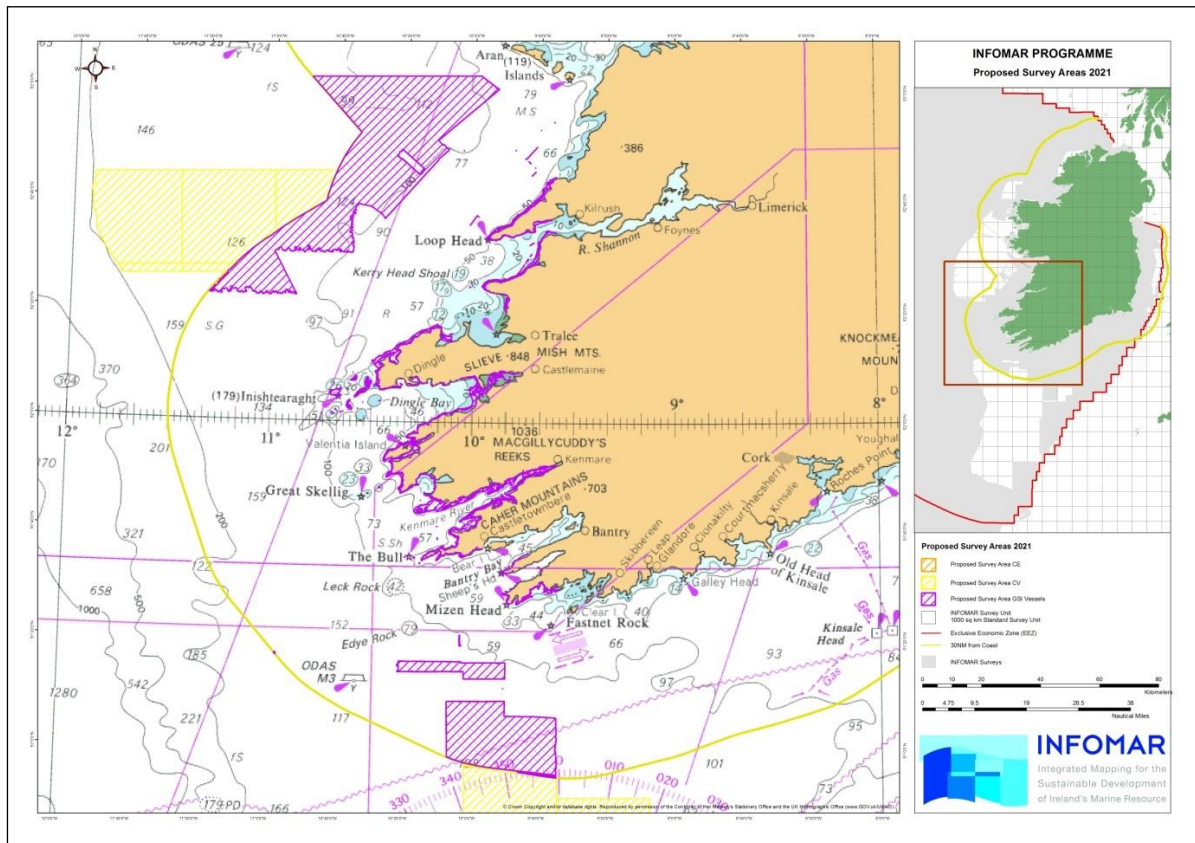


Figure 1: RV's Voyager, Keary, Geo, Mallet, Galtee and Lir Celtic Sea survey areas.

The two sites south of Mizen Head are denoted by the purple-coloured hatched areas in Figure 1, the coordinates are as follows:

Latitude	Longitude
51° 16.625'N	009° 49.463'W
50° 55.624'N	009° 34.263'W
51° 16.315'N	010° 20.588'W
50° 58.923'N	010° 06.151'W

The inshore section is denoted in the purple-coloured hatched areas in Figure 1, the coordinates are as follows:

Latitude	Longitude
51° 38.229'N	008° 41.806'W
52° 44.936'N	009° 35.475'W

The offshore section in the Atlantic Ocean is denoted in yellow and purple hatching in Figure 1, the coordinates are as follows:

Latitude	Longitude
53° 03.404'N	009° 58.144'W
52° 22.755'N	010° 52.510'W
52° 44.431'N	011° 53.757'W
52° 25.858'N	011° 44.602'W

Detailed coordinates of each survey polygon can be provided on request.

5.2: The RV Celtic Voyager is expected to carry out survey operations in the Celtic Sea, within the yellow hatched area of Figure 2.

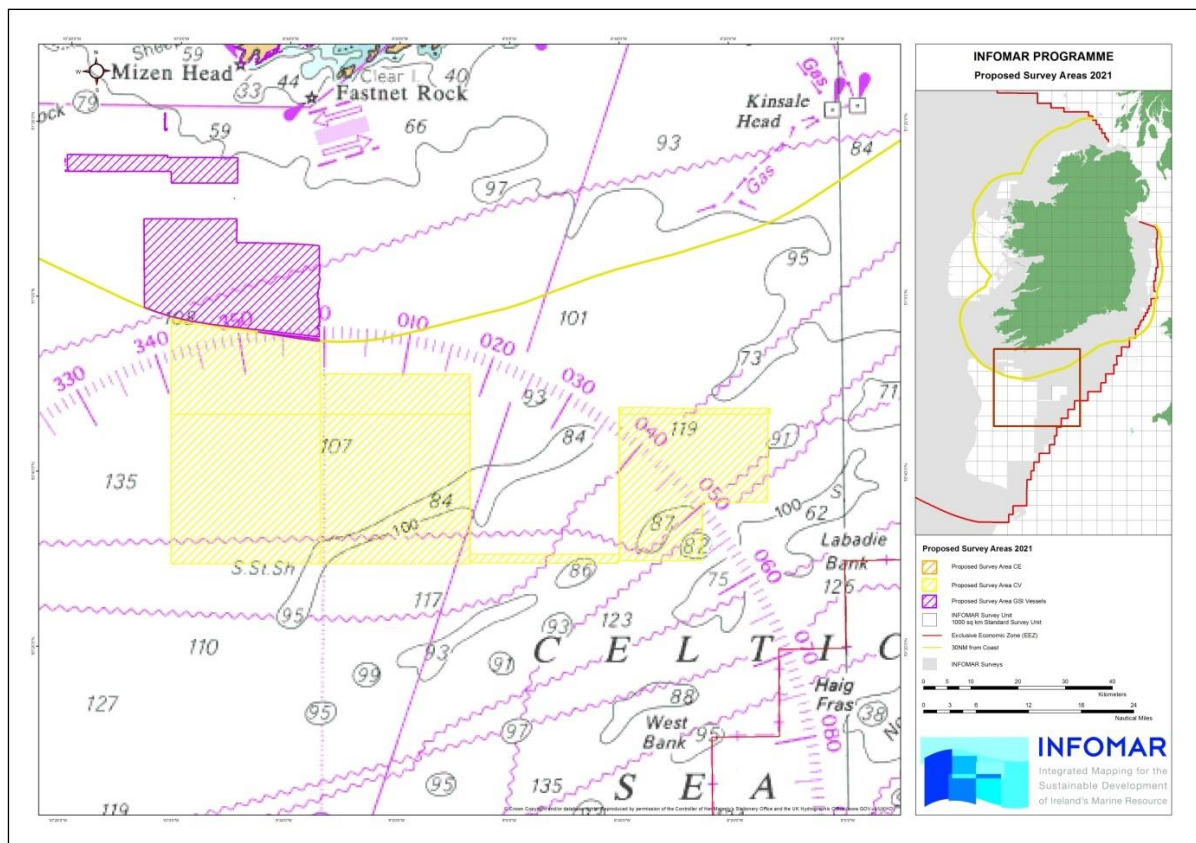


Figure 2: RV Celtic Voyager Celtic Sea north survey area.

The generic coordinates where the survey operations are expected to take place are as follows:

Latitude	Longitude
50° 30.073'N	008° 25.221'W
50° 29.648'N	010° 00.598'W
50° 57.657'N	010° 01.203'W
50° 47.658'N	008° 13.366'W

Detailed coordinates of each survey polygon can be provided on request.

5.3: The RV *Celtic Voyager* is also expected to carry out survey operations in the Celtic Sea, within the yellow hatched area of Figure 3.

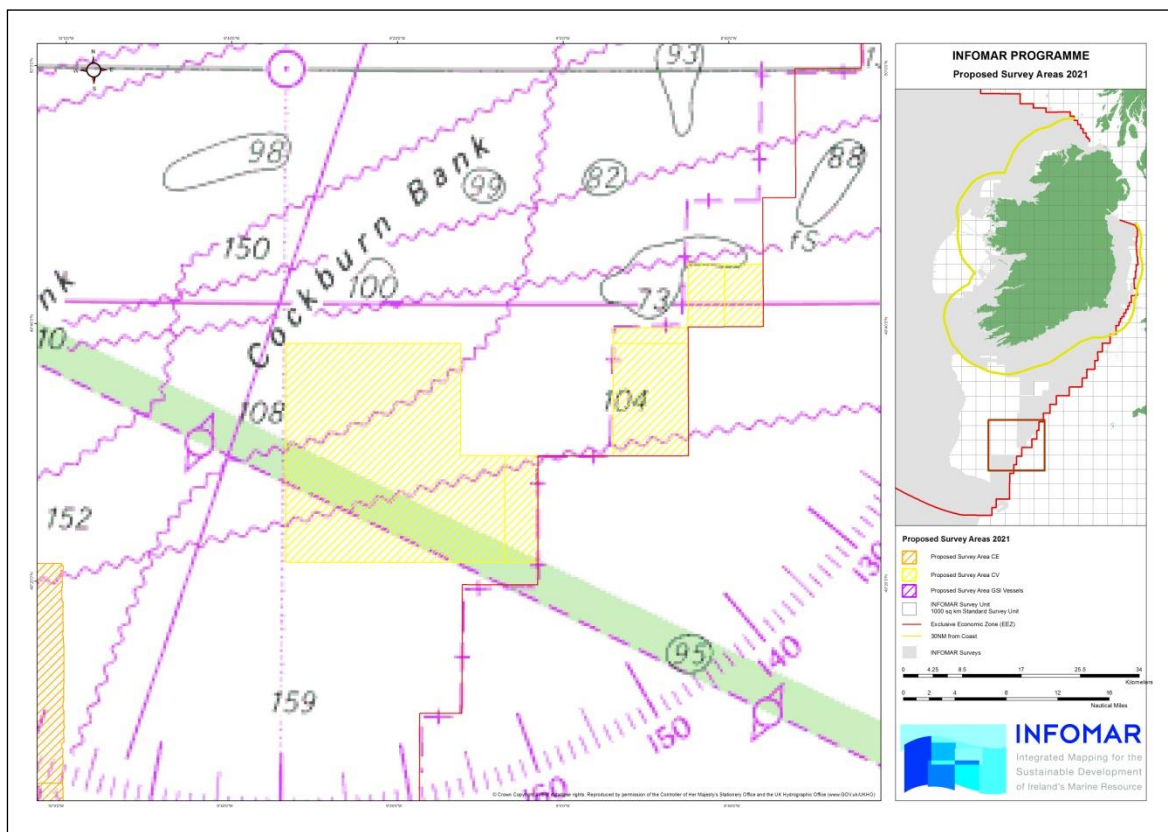


Figure 3: RV Celtic Voyager Celtic Sea south survey area.

The generic coordinates where the survey operations are expected to take place are as follows:

Latitude	Longitude
49° 21.792'N	009° 03.012'W
49° 21.564'N	009° 32.987'W
49° 38.532'N	009° 33.178'W
49° 44.844'N	008° 35.920'W

Detailed coordinates of each survey polygon can be provided on request.

5.4: The RV *Celtic Voyager* is also expected to carry out survey operations off the Donegal coast, within the yellow hatched area of Figure 4.

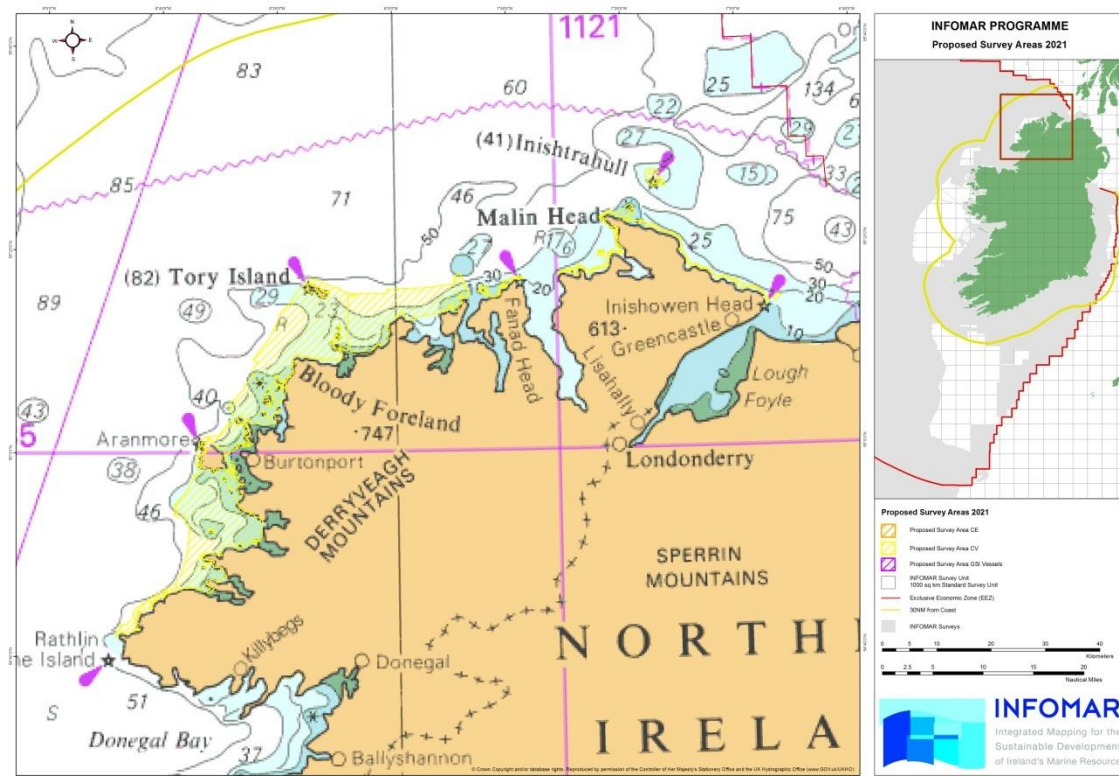


Figure 4: RV *Celtic Voyager* Donegal coast survey area.

The generic coordinates where the survey operations are expected to take place are as follows.

Latitude	Longitude
54° 41.664'N	008° 48.624'W
55° 16.996'N	008° 15.710'W
55° 13.582'N	006° 55.701'W

Detailed coordinates of each survey polygon can be provided on request.

5.5: The RV *Celtic Explorer* is expected to carry out survey operations in the Celtic Sea, within the orange hatched area of Figure 5.

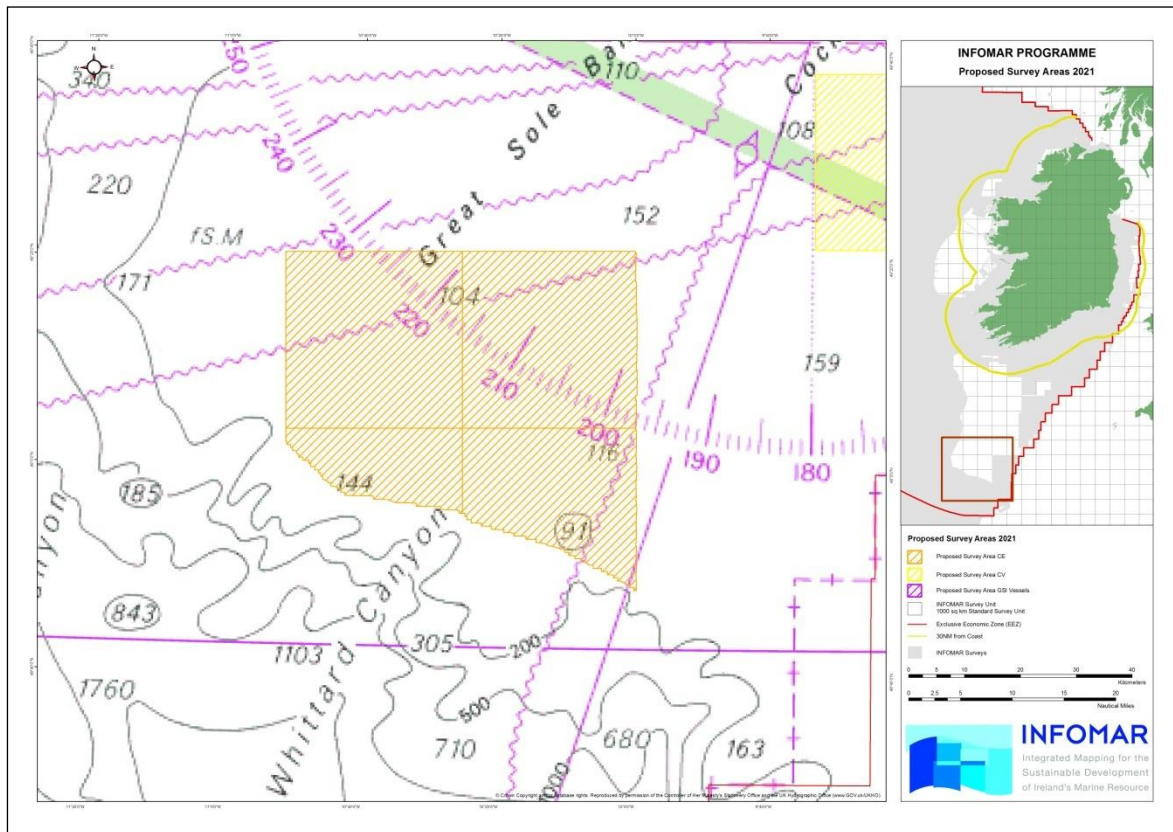


Figure 5: RV Celtic Explorer Celtic Sea survey area.

The generic coordinates where the survey operations are expected to take place are as follows.

Latitude	Longitude
48° 48.655'N	009° 58.758'W
49° 02.200'N	010° 50.680'W
49° 20.726'N	010° 51.371'W
49° 21.365'N	009° 59.511'W

Detailed coordinates of each survey polygon can be provided on request.

6. Additional information

INFOMAR Charts and information on a bay basis can be found on the website at: <http://www.infomar.ie>.

Images, Bathymetry, Backscatter, Shaded Relief, Classification .pdfs are available on request.

INFOMAR offshore & Geological Survey Ireland onshore digital data can be downloaded via <https://jetstream.gsi.ie/iwdds/index.html>

7. Contact Details

Enquiries or supporting information in relation to the above works should be directed by email to info@infomar.ie, or by phone to Marine Institute +353 91 387200 or Geological Survey Ireland +353 1 6782000.

All mariners are reminded of their responsibilities under the International Collision Regulations and are reminded of [Marine Notice No. 17 of 2007](#), which gives general advice in relation to the activities of vessels engaged in survey work for hydrographic, seismic, fishing research and underwater operations.

The International Regulations for Prevention of Collisions at Sea (COLREGS) are implemented in Irish law by the *Merchant Shipping (Collision Regulations) (Ships and Water Craft on the Water) Order 2012* [S.I. No. 507 of 2012], and the *Signals of Distress (Ships) Rules 2012* [S.I. No.170 of 2012]. [See Marine Notice No. 06 of 2013](#). These Statutory Instruments may be purchased by mail order from Government Publications, Office of Public Works, 52 St. Stephen's Green, Dublin 2. Tel: (01) 6476834/1890-213434. They are also available online at: www.irishstatutebook.ie.

Marine Notices are issued purely for maritime safety and navigation reasons and should not be construed as conferring rights or granting permissions.

Irish Maritime Administration,
Department of Transport,
Leeson Lane, Dublin 2, D02 TR60, Ireland.

09/03/2021

Encl: Annex

For any technical assistance in relation to this Marine Notice, please contact:
The Marine Survey Office, email: MSO@transport.gov.ie
For general enquiries, please contact the Maritime Safety Policy Division, email:
MaritimeSafetyPolicyDivision@transport.gov.ie
Written enquiries concerning Marine Notices should be addressed to:
Dept. of Transport, Maritime Safety Policy Division, Leeson Lane, Dublin 2, D02 TR60, Ireland.
email: MarineNotices@transport.gov.ie or visit us at: www.gov.ie/transport

Annex 1: Overview of 2021 offshore survey areas.

