



Marine Notice No. 08 of 2022

*Notice to all Shipowners, Fishing Vessel Owners, Agents, Shipmasters, Skippers, Fishers,
Yachtsmen and Seafarers*

Deployment of Four mounted Acoustic Doppler Current Profilers (ADCPs) frames in Castlemaine and Valentia, off the Coast of Co. Kerry

1. Notice of Activity

The Department of Transport has been advised that TechWorks Marine Ltd plan to deploy four trawl-resistant bottom mounted Acoustic Doppler Current Profilers (ADCPs) frames in Castlemaine and Valentia, off the coast of Co. Kerry between the **07/02/2022** and **21/02/2022**. If the deployment is delayed due to unsuitable weather conditions, then the deployment will be carried out on the next viable tide and weather window. The locations are detailed below, and associated Admiralty Chart can be seen in Appendix 1.

2. Location of Activity

ID	Latitude	Longitude
Castlemaine ADCP2	52° 03' 28.03" N	010° 06' 06.21" W
Castlemaine ADCP3	52° 05' 35.71" N	009° 57' 56.35" W
Valentia ADCP2	51° 56' 15.70" N	010° 19' 57.45" W
Valentia ADCP5	51° 53' 08.37" N	010° 24' 07.54" W

3. Detail of Deployment and Vessel

The **Ocean Navigator** (Callsign: **EI018**) will deploy the four trawl-resistant bottom mounted Acoustic Doppler Current Profilers (ADCPs) frames. The frames are approx. 1m x 1m. The frames will be on the seabed for a minimum period of one calendar month and a maximum period of two months (weather permitting). They are required to carry out water quality sampling surveys and vessel mounted ADCP surveys at the same time as the deployments and these are tide and weather dependent and may cause a slight delay in the recovery of the seabed frames. The ADCPs will be measuring currents through the water column at each location over the course of their month-long deployment. This data will be used to validate a Hydrodynamic model being developed of the area for Irish Water. There will be no surface marker during the extent of deployment so vessel traffic will not need to avoid the area but should be aware of its presence.

Throughout operations, the vessel will be displaying the appropriate lights and shapes as required under the COLREGS Rule 27 (b).

4. Contact Details

For further information please contact: Charlotte O’Kelly Managing Director

Email: charlotte@techworks.ie

All mariners are reminded of their responsibilities under the International Collision Regulations and are reminded of [Marine Notice No. 17 of 2007](#), which gives general advice in relation to the activities of vessels engaged in survey work for hydrographic, seismic, fishing research and underwater operations.

The International Regulations for Prevention of Collisions at Sea (COLREGS) are implemented in Irish law by the *Merchant Shipping (Collision Regulations) (Ships and Water Craft on the Water) Order 2012* [S.I. No. 507 of 2012], and the *Signals of Distress (Ships) Rules 2012* [S.I. No.170 of 2012]. [See Marine Notice No. 06 of 2013](#). These Statutory Instruments may be purchased by mail order from Government Publications, Office of Public Works, 52 St. Stephen’s Green, Dublin 2. Tel: (01) 6476834/1890-213434. They are also available online at: www.irishstatutebook.ie.

Note: Marine Notices are issued purely for maritime safety and navigation reasons and should not be construed as conferring rights or granting permissions.

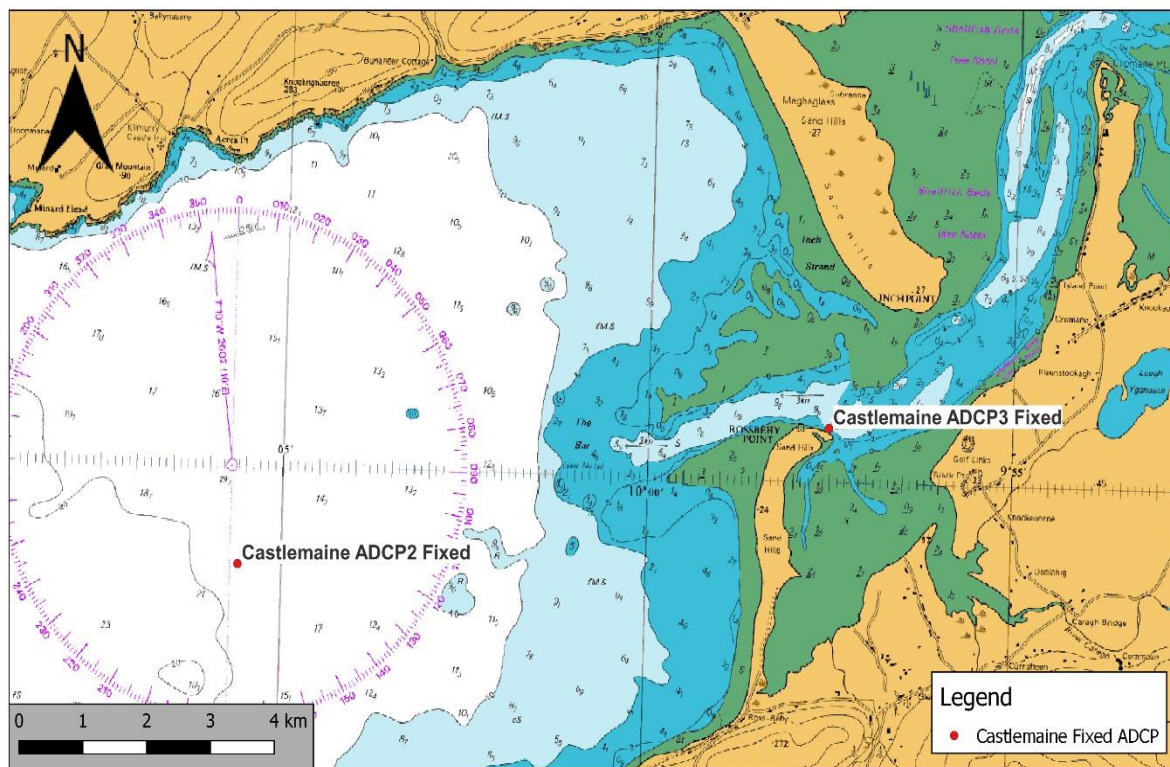
Irish Maritime Administration,
Department of Transport,
Leeson Lane, Dublin 2, D02 TR60, Ireland.

04/02/2022

Encl: Appendix 1

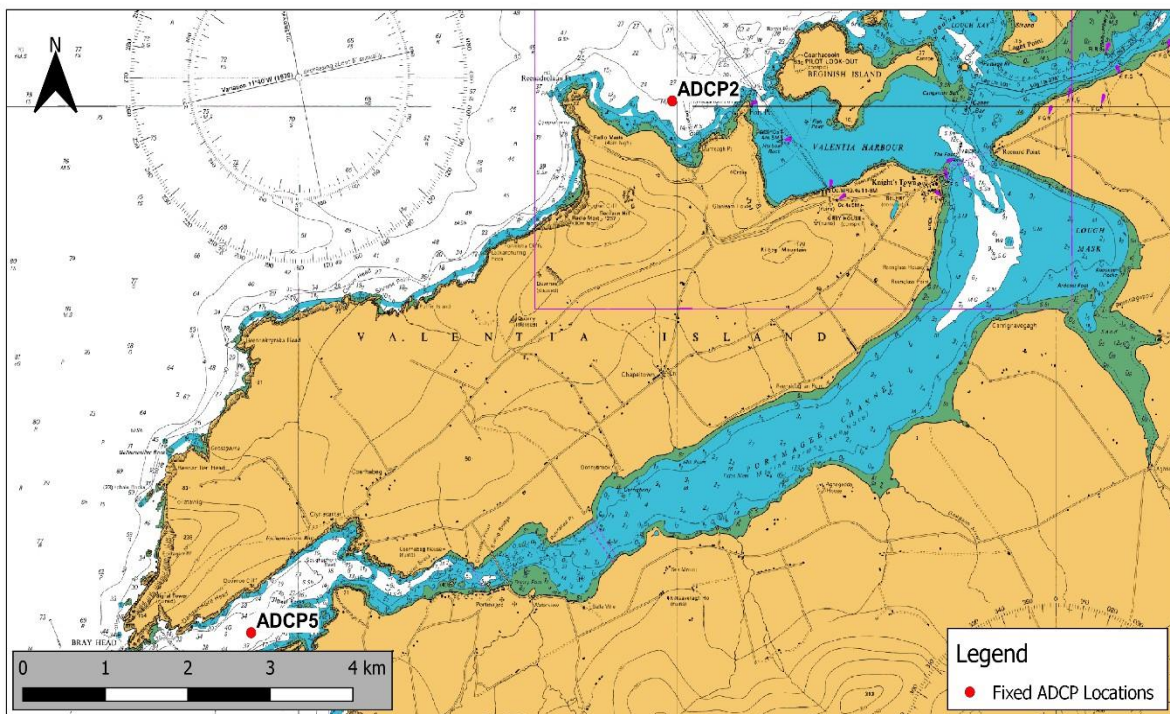
For any technical assistance in relation to this Marine Notice, please contact:
The Marine Survey Office, email: MSO@transport.gov.ie
For general enquiries, please contact the Maritime Safety Policy Division, email:
MaritimeSafetyPolicyDivision@transport.gov.ie
Written enquiries concerning Marine Notices should be addressed to:
Dept. of Transport, Maritime Safety Policy Division, Leeson Lane, Dublin 2, D02 TR60, Ireland.
email: MarineNotices@transport.gov.ie or visit us at: www.gov.ie/transport

Appendix 1 Map of Deployment Locations



Location	Latitude	Longitude
ADCP2	52.0706	-10.093156
ADCP3	52.090294	-9.958764

Fixed ADCP Locations Castlemaine



Location	Latitude	Longitude
ADCP2	51.934219	-10.334728
ADCP5	51.881536	-10.408842

Fixed ADCP Locations Valentia

