



Marine Notice No. 16 of 2024

*Notice to all Shipowners, Fishing Vessel Owners, Agents, Shipmasters, Skippers, Fishers,
Yachtsmen and Seafarers*

Greenlink Interconnector Ltd. – Beach Pull and Cable Lay Operation South-East Co. Wexford

1. Notice of Activity

The Department of Transport has been advised that Greenlink Interconnector Ltd is proposing to develop an electricity interconnector to allow for power cable installation and power cable protection activities. Specific activities detailed below in the offshore and nearshore of Ireland will take place from **22 March 2024** to **14 April 2024**, subject to weather and operational constraints.

- A. **Nearshore**: Preparation works with a small crew transfer vessel and a multicat vessel, the **Forth Warrior** serving as a diving support vessel. The vessel will predeploy anchors, which will be left in place and marked visually with buoys.
Offshore: Survey works with the cable lay vessel **Connector** along the cable route with a remotely operated vehicle (ROV).
- B. **Nearshore**: Beach pull operations with the **Connector**. At this time also, the small crew transfer vessel and the **Forth Warrior** serving as a diving support vessel will be in front of the beach.
- C. **Nearshore**: Once the power cable has been landed onshore, operations by the **Forth Warrior** will again be undertaken in front of the beach with divers and anchors to ensure the cable landing area is sufficiently protected for its intended lifetime.
Offshore: In the meantime, the cable laying vessel **Connector** will start moving further offshore through the entire exclusion zone shown in the map in Appendix 2 of this Marine Notice.

During the cable lay operations, vessels will be mobilised to monitor sections of approximately 20 km of unburied cable route. As sections of cable become buried, the vessels will gradually be demobilised.

2. Location of Activity

The beach pull operations in the nearshore are to be undertaken within approximately 1 nm of Baginbun Beach. The cable lay operations following the beach pull operations will take place along the planned interconnector route from the landfall location at Baginbun Beach towards the middle of the interconnector route. The coordinates of the planned route are available in Appendix 1 to this Marine Notice and a map of the proposed route with indicator points is available in Appendix 2. A focus of the nearshore area with the exclusion zone and cable route overlaid is set out in the map in Appendix 3.

3. Details of Survey Vessels

The operations will be conducted by the following survey vessels:

- Multicat Forth Warrior (callsign: 2JHR8)
- Connector (DP3) (callsign: LXEV)
- CRC Voyager (callsign: MBZZ7)

The vessels carrying out the works will be restricted in their ability to maneuver, therefore, all passing vessels are requested to keep a wide berth and pass at minimum speed to reduce vessel wash. The vessels will display the appropriate lights and shapes if applicable (two black spheres and in the middle a black diamond shape, in a vertical line). The vessels will monitor VHF channel 16 at all times.

4. Contact Details

Enquiries regarding the contents of this Marine Notice, or any other relevant matters, should be directed to:

- Emiel Vereecke
Offshore Contractor - Project Engineer
(Tel): +32 498 31 25 09
Email: emiel.vereecke@jandenul.com
- Giulio Gambacciani
Offshore Installation Manager
(Tel): +32 492 23 51 25
Email: gambacciani@jandenul.com
- Nigel Proctor BSc. (Hons) MIBiol CBIol
Fisheries Liaison Officer
Precision Marine Survey Limited
Tel: +44 1964 624423
Mobile: +44 7702 730891
E-mail: n.proctor@precisionmarine.co.uk

All mariners are reminded of their responsibilities under the International Collision Regulations and of [Marine Notice No. 17 of 2007](#), which gives general advice in relation to the activities of vessels engaged in survey work for hydrographic, seismic, fishing research and underwater operations.

The International Regulations for Prevention of Collisions at Sea (COLREGS) are implemented in Irish law by the *Merchant Shipping (Collision Regulations) (Ships and Water Craft on the Water) Order 2012* [S.I. No. 507 of 2012] and the *Signals of Distress (Ships) Rules 2012* [S.I. No.170 of 2012]. [See Marine Notice No. 06 of 2013](#). These Statutory Instruments may be purchased by mail order from Government Publications, Office of Public Works, Mountshannon Road, Dublin, D08 XA06 Tel: (046) 9423100. They are also available online at: www.irishstatutebook.ie.

Note: Marine Notices are issued purely for maritime safety and navigation reasons and should not be construed as conferring rights or granting permissions.

Irish Maritime Administration,
Department of Transport,
Leeson Lane, Dublin 2, D02 TR60, Ireland.

21/03/2024

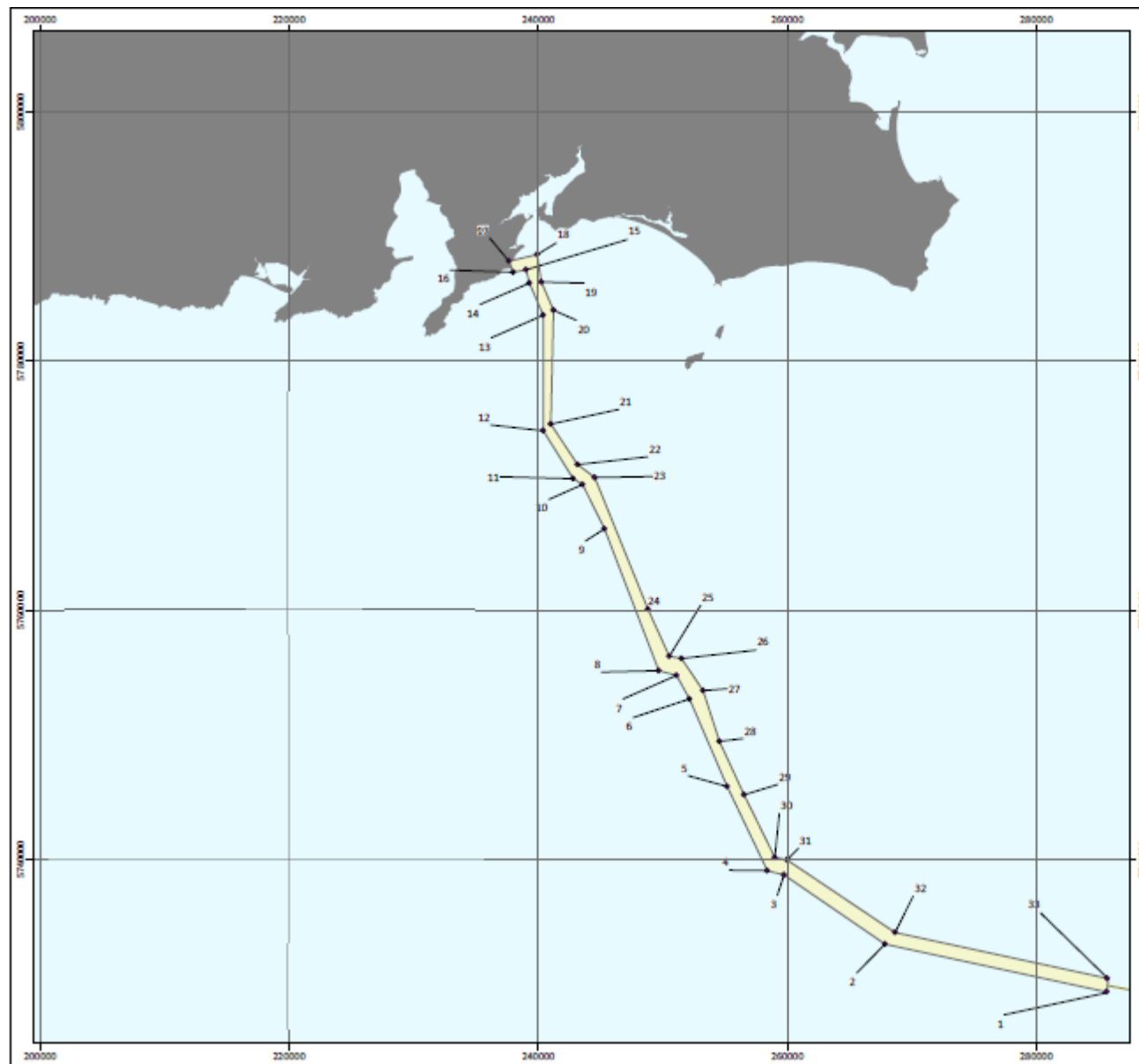
Encl: Appendix 1: Coordinates of a pre-lay grapnel run (PLGR) working area.
Appendix 2: Map of a pre-lay grapnel run (PLGR) working area.
Appendix 3: Nearshore focus area - green exclusion zone / blue cable route.

For any technical assistance in relation to this Marine Notice, please contact:
The Marine Survey Office, email: MSO@transport.gov.ie.
For general enquiries, please contact the Maritime Safety Policy Division, email:
MaritimeSafetyPolicyDivision@transport.gov.ie.
Written enquiries concerning Marine Notices should be addressed to:
Dept. of Transport, Maritime Safety Policy Division, Leeson Lane, Dublin 2, D02 TR60, Ireland.
email: MarineNotices@transport.gov.ie or visit us at: www.gov.ie/transport.

Appendix 1: Coordinates of PLGR working area.

ID	Latitude	Longitude
1	51° 40.461' N	6° 6.000' W
2	51° 42.102' N	6° 21.573' W
3	51° 44.888' N	6° 28.847' W
4	51° 45.037' N	6° 30.012' W
5	51° 48.591' N	6° 33.092' W
6	51° 52.304' N	6° 36.021' W
7	51° 53.288' N	6° 37.015' W
8	51° 53.458' N	6° 38.266' W
9	51° 59.466' N	6° 42.569' W
10	52° 1.334' N	6° 44.260' W
11	52° 1.564' N	6° 44.945' W
12	52° 3.570' N	6° 47.222' W
13	52° 8.557' N	6° 47.640' W
14	52° 9.915' N	6° 48.720' W
15	52° 10.491' N	6° 49.013' W
16	52° 10.348' N	6° 49.906' W
17	52° 10.815' N	6° 50.248' W
18	52° 11.169' N	6° 48.282' W
19	52° 9.992' N	6° 47.888' W
20	52° 8.806' N	6° 46.929' W
21	52° 3.879' N	6° 46.721' W
22	52° 2.186' N	6° 44.683' W
23	52° 1.660' N	6° 43.427' W
24	51° 56.085' N	6° 39.243' W
25	51° 54.095' N	6° 37.591' W
26	51° 54.028' N	6° 36.715' W
27	51° 52.685' N	6° 35.100' W
28	51° 50.532' N	6° 33.784' W
29	51° 48.276' N	6° 31.887' W
30	51° 45.625' N	6° 29.534' W
31	51° 45.542' N	6° 28.669' W
32	51° 42.622' N	6° 20.920' W
33	51° 41.046' N	6° 6.000' W

Appendix 2: Map of PLGR working area



GREENLINK INTERCONNECTOR

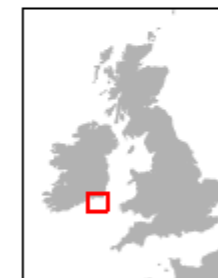
ROUTE OVERVIEW Simplified Construction Corridor IRELAND

Drawing No: P2377-LOC-007

B

Legend

- Simplified Points
- Simplified corridor (~800m)

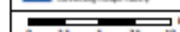


WGS 84 datum for all coordinates

Date	6th December 2022
Projection	WGS_1984_UTM_Zone_30N
Spheroid	WGS_1984
Datum	D_WGS_1984
Data Source	GEBCO; EMODNET; ESR; Greenlink
File Reference	J:\P2377\Mod\04_LOC_P2377-LOC-007.mxd
Created By	Chris Carroll
Reviewed By	N/A
Approved By	Chris Carroll



Co-financed by the European Union
Connecting Europe Facility



© Intertek Ltd, 2022
All rights reserved.

Appendix 3: Nearshore focus area - green exclusion zone / blue cable route

