



NORTHERN TRUST J CUP IRELAND 2024

(for J109, J80, J24 and Mixed IRC J Boat Classes)

Incorporating the J109 European Championships 2024

J80 National Championships
J24 Eastern Championships

hosted by the

ROYAL IRISH YACHT CLUB

Saturday 7th – Sunday 8th September 2024

Kindly supported by



SAILING INSTRUCTIONS

The notation [NP] 'in a rule means that a boat may not protest another boat for breaking that rule. This changes RRS 60.1(a).

Penalties for breaches marked [DP] 'or Class Rules are at the discretion of the Protest Committee and may be less than disqualification.

1. RULES

- 1.1. The regatta will be governed by the rules as defined in The Racing Rules of Sailing (RRS).
- 1.2. The prescriptions of the Irish Sailing Association will apply.
- 1.3. Applicable class rules are as per NOR 1

2. CHANGES TO SAILING INSTRUCTIONS

- 2.1. Any change to the sailing instructions will be posted before 1000 on the day it will take effect, except that any change to the schedule of races will be posted on the Official Notice Board by 2000 on the day before it will take effect.

3. COMMUNICATIONS WITH COMPETITORS

- 3.1. Notices to competitors will be posted on the Official Noticeboard at:
www.racingrulesofsailing.org/documents/7385/event
- 3.2. Messages to competitors from the Race Committee may also be posted on the Competitors' WhatsApp group, but these are for information only and errors, contradictions or anomalies will not be grounds for redress. This changes RRS 62.1(a). The WhatsApp group may be joined using this link: <https://chat.whatsapp.com/lbAlfRmlw7oKeFjtCDGRIW>
- 3.3. The Race Committee may draw attention to signals given on the Committee vessel and communicate other information on VHF at any time. The Race Committee will transmit on Channel 71. Failure to transmit or to receive such communication will not be grounds for redress. This changes RRS 62.1(a).

4. CODE OF CONDUCT

- 4.1. [NP][DP] Competitors and support persons shall comply with reasonable requests from Race Officials.

5. SIGNALS MADE ASHORE

- 5.1. Signals made ashore will be flown at the RIYC flagstaff.
- 5.2. When flag AP is displayed ashore, RRS Race Signals are changed so that '1 minute' is replaced by 'not less than 60 minutes.'

6. SCHEDULE OF RACES





- 6.1. Schedule

Date	Briefing Time	First warning Signal	Number of races Scheduled
Saturday 7th September HW DL 1446 3.8M	1030hrs	1155hrs	3 races
Sunday 8th September HW DL 1523 3.7M		1125 hrs.	3 races

- 6.2. Classes may be started together, or separately, and in any order, at the discretion of the Race Committee.
- 6.3. The warning signal for each succeeding race will be made as soon as practicable after the completion of the previous race
- 6.4. On Sunday 8th September, The first warning signal of a race will not be made after 15.30hrs.

7. CLASS FLAGS

7.1. Class flags are as follows:

Class	Rating	Class Flag
IRC	IRC	Numeral pennant 0 
J/109	One design	Numeral pennant 9 
J/80	One design	Numeral pennant 8 
J/24	One design	Numeral pennant 4 

8. RACING AREA

8.1. Racing will take place in the waters of Dublin Bay (Admiralty chart no 1468).

8.2. The approximate location of the Committee Vessel will be announced on VHF CH 71 before the first Warning Signal on each day of racing.

9. COURSES

9.1. Courses will be either Windward-Leeward or Round the Cans.

9.2. No later than the warning signal, the race committee signal vessel may display the approximate compass bearing of the first leg.

9.3. For windward-leeward courses:

9.3.1. A spreader mark may be laid at each windward mark.

9.3.2. The diagrams in Appendix A show the courses, the order in which marks are to be passed, the side on which each mark is to be left and the number of rounds to be sailed.

9.3.3. At a gate, if one mark is missing or out of position the remaining mark shall be rounded to port.

9.4. For Round the Cans races:

9.4.1. Courses will be displayed on a board on the Committee Vessel

9.4.2. Courses will be advised on the designated VHF Channel 71

9.4.3. Marks used will be as described in [DBSC-Racing-Marks-and-Bearings-2024](#) and [DBSC-Chart-Racemarks](#) which can be downloaded from www.dbsc.ie/racing/

9.4.4. In addition to the marks described in SI 9.4.3, any of the marks on the Windward/Leeward course may be used as part of the course and these will be indicated accordingly when the course is displayed/described.

10. MARKS

10.1. The description and colour of laid inflatable marks for the Windward/Leeward course are:

Marks	Description
Outer Windward Marks (Marks 1 and 1a)	Orange Cylindrical
Inner Windward Mark (Mark 2)	Black Cylindrical
Gate Marks (Marks 3 and 3a)	Orange Cylindrical

10.2. The starting mark (where used) will be distinctive inflatable or dan buoy with an orange flag.

10.3. The finishing mark will be a distinctive inflatable or dan buoy with a blue flag.

10.4. A race committee vessel signaling a change to a leg of the course is a mark as provided in SI 12.2

11. THE START

- 11.1. To alert boats that a race or sequence of races will begin soon, the Orange starting line flag will be displayed with one long sound signal at least five minutes before a warning signal is displayed.
- 11.2. The starting line will be between a pole displaying an orange flag on the race committee signal vessel at the starboard end and either a starting mark or the orange flag on a RIB at the port end of the line.
- 11.3. [NP] [DP] Boats whose warning signal has not been made shall avoid the starting area during the starting sequence for other races.
- 11.4. In addition to RRS 29.1, the Race Committee may, where possible, broadcast individual OCS recalls by sail number on VHF channel 71. Failure to do so or any delay or the order of the broadcast will not be grounds for a request for redress. This changes RRS 62.1(a).
- 11.5. In addition to the provisions of RRS A5, a boat starting later than 5 minutes after her starting signal will be scored Did Not Start.

12. CHANGE OF THE NEXT LEG OF THE COURSE

- 12.1. To change the next leg of the course, the race committee will move the original mark (or finishing line) to a new position. Minor changes may not be signaled.
- 12.2. Except at a gate, boats shall pass between the race committee vessel signaling the change of the next leg and the nearby mark, leaving the mark to port and the race committee vessel to starboard. This changes RRS 28

13. THE FINISH

- 13.1. The finishing line will be between a staff displaying a blue flag on the Committee Vessel at the starboard end and the course side of the port end finishing mark.
- 13.2. When a Race Committee vessel displaying ICF F and making repeated sound signals is positioned adjacent to a mark or gate of the course, boats, having rounded that mark or passed through that gate, shall proceed directly to the Finish line to finish. SI 12.2 will apply. This changes RRS 32.

14. PENALTY SYSTEM

- 14.1. For all class RRS 44.1 is changed so that the Two-Turns Penalty is replaced by the One-Turn Penalty.
- 14.2. RRS Appendix T, Arbitration, will apply. If a party, having been informed that an Arbitration Meeting will be held, does not attend, other parties may take a Post-Race Penalty at any time until the protest committee has completed taking evidence. This changes RRS Appendix T1(a).

15. TIME LIMITS AND TARGET TIMES

- 15.1. In addition to the provisions of RRS A5, boats failing to finish within 10 minutes after the second boat in their class sails the course and finishes will be scored Did Not Finish. This changes RRS 35.

16. HEARING REQUESTS

- 16.1. Protests shall be lodged online using the link on the official notice at <https://www.racingrulesofsailing.org/documents/7385/event> . This amends RRS 61.2.
- 16.2. Protests shall be lodged each day within one hour (1 hr) after the last boat to finish in the last race of each day or the race committee signals no more racing today, whichever is later. The Protest Time Limit will be posted on the official notice board.
- 16.3. Protest hearings will be held in the RIYC and the schedule shall be posted on the event virtual notice board to inform competitors of hearings in which they are parties or named witnesses. It is the responsibility of competitors to make themselves available at the time and place indicated on the virtual notice board.

17. SCORING

- 17.1. A minimum of 2 races shall be sailed to constitute a series.
- 17.2. When fewer than four races have been completed, a boat's series score will be the total of her race scores.
- 17.3. When four or more races have been completed, a boat's series score will be the total of her race scores excluding her worst score.

18. SAFETY REGULATIONS/PROHIBITED AREAS

- 18.1. [NP][DP] A boat that retires from a race shall notify the Race Committee as soon as possible on VHF.
- 18.2. [NP][DP] Boats shall keep clear of commercial shipping at all times.
- 18.3. [DP] When Racing, a boat shall not enter the area bounded by the following:- Poolbeg Lighthouse, Navigation Marks 6, 4, Dublin Bay Buoy, Navigation Marks 1, 3, 5 and North Bull Lighthouse.
- 18.4. [DP] When racing, a boat shall not pass between Dalkey Island and the mainland nor between the shore and the special yellow buoys marking the Dun Laoghaire Rathdown coastal swimming areas.

19. EQUIPMENT AND MEASUREMENT CHECKS

- 19.1. A boat or equipment may be inspected at any time for compliance with the Class Rules and Sailing Instructions.

20. OFFICIAL VESSELS

- 20.1. The main Committee Vessel is a Blue Catamaran Motor Boat

21. PRIZEGIVING

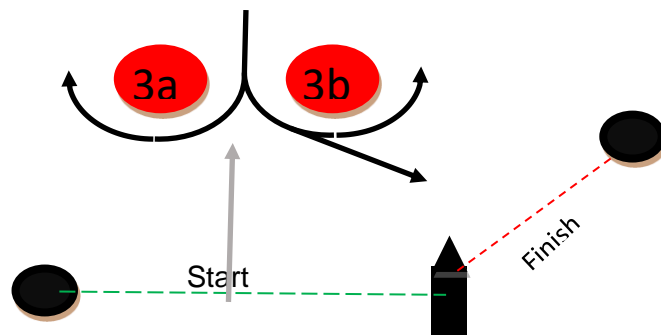
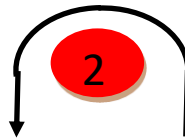
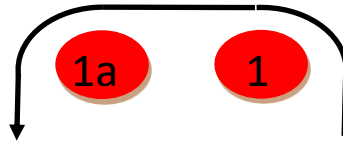
- 21.1. Daily prizes may be awarded at 1800 each day in the RIYC Clubhouse.
- 21.2. Regatta prizes will be awarded as soon as possible after racing on Sunday 8th September.

22. INSURANCE

- 22.1. Each Entry to the regatta should have adequate insurance in place.

Appendix A

Windward Leeward Course diagrams



Course – Windward/Leeward Outer mark

Signal	Mark Rounding Order
O 2	Start – 1 – 1a - 3a/3b – 1 – 1a – 3b - Finish
O 3	Start – 1 – 1a - 3a/3b – 1 – 1a- 3a/3b – 1 – 1a – 3b - Finish
O 4	Start – 1 – 1a - 3a/3b – 1 – 1a- 3a/3b – 1 – 1a - 3a/3b – 1 – 1a – 3b - Finish

Course – Windward/Leeward Inner mark

Signal	Mark Rounding Order
I 2	Start – 2 - 3a/3b – 2– 3b - Finish
I 3	Start – 2 - 3a/3b – 2 - 3a/3b – 2 – 3b - Finish
I 4	Start – 2 - 3a/3b – 2 - 3a/3b – 2 - 3a/3b – 2 – 3b - Finish

The Commodore and Flag Officers of the Royal Irish Yacht Club would like to acknowledge the generous contribution to this event by all our sponsors

