



# **COPA BRASIL DE VELA**

***15 - 20 December 2015***

***ORGANIZATION: Prefeitura Municipal de Niterói***  
***TECHNICAL ORGANIZATION: Confederação Brasileira de Vela***

## **SAILING INSTRUCTIONS**

### **1. RULES**

- 1.1 The regatta will be governed by the rules as defined in *The 2013-2016 Racing Rules of Sailing*(RRS). Other documents under RRS Definition: Rule (g) include:
  - 1.1.1 Appendix P, special Procedures for Rule 42.
  - 1.1.2 For medal races, ISAF Addendum Q, Umpired Fleet Racing, will apply and takes precedence over any conflicting instructions.
- 1.2 Class rules will apply except those related with conditions to organize and conduct Class Championships.
- 1.3 For the "Medal Race" Addendum Q will apply, as described at the end of this Sailing Instructions. For that race, sailing instructions of Addendum Q will prevail over any other items of this Sailing Instructions that conflict.
- 1.4 In all rules governing this regatta:

Both 'athlete' and 'competitor' mean a person competing in the event.

The term 'support team' mean coaches, team leaders and other support personnel.

*[DP] denotes a rule for which the penalty is at the discretion of the International Jury;*

*[NP] denotes that a breach of this rule will not be grounds for a protest by a boat. This changes RRS 60.1(a); and*

*[SP] denotes a rule for which a standard penalty may be applied by the race committee without a hearing or a discretionary penalty applied by the International Jury with a hearing.*

- 1.5 Decisions of the International Jury will be final as provided in RRS 70.5.
- 1.6 For the Nacra 17, 49er, 49er FX, Hobie Cat 16 and 29er RRS 44.1 and RRS P2.1 are changed so that the Two-Turns Penalty is replaced by the One-Turn Penalty.
- 1.7 If there is a conflict between languages, the original version of the document will take precedence.

### **2. SAFETY REGULATIONS [DP] [NP]**

- 2.1 Competitors shall wear personal flotation devices at all times while afloat, except briefly while changing or adjusting clothing or personal equipment.
- 2.2 Boats not leaving the harbour for a scheduled race shall promptly notify the Regatta Office.
- 2.3 Before leaving to race on each scheduled racing day, each crew shall personally signout on the required race committee form located at the boat park.
- 2.4 Within the protest time limit after returning ashore, each crew shall personally sign in on the required form, located at the same place as indicated in SI 2.3.
- 2.5 A boat that retires from racing shall notify the Race Committee before leaving the racing area, or if that is not possible, shall notify the Regatta Office as soon as possible after returning ashore.
- 2.6 In accordance with NoR 14, Berthing, boats shall return to and remain in their assigned places in the boat park. When ashore boats shall be kept at the designated places in the Venue from 1900 on 16 December 2015 until the end of the event.
- 2.7 Boats shall not sail outside their assigned race areas after arriving there, unless they sail directly back to the Venue. Boats shall avoid the ferry routes shown in Addendum A when possible. When not possible, boats shall cross the ferry routes as near to right angles as possible and shall not interfere with any ferry.

### **3. CODE OF CONDUCT [DP]**

- 3.1 Competitors shall comply with any reasonable request from a regatta official.
- 3.3 Boats that are on a Course Area or passing through a Course Area to which they are not assigned shall remain clear of the area where boats are racing and any official boat.

### **4. NOTICE TO COMPETITORS**

- 4.1 Notice to competitors will be posted on the official notice board located near to the boat park.
- 4.2 When a visual signal is displayed over an area or class flag, the signal applies only to that area or class. This changes the Race Signals preamble.

- 4.3 Signals ashore will be displayed at the official flag pole, located close to the boat park.
- 4.4 When flag AP is displayed ashore, '1 minute' is replaced by 'not less than 30 minutes' for Race Area São Francisco, not less than 60 minutes for Race Areas Escola Naval, Aeroporto and Pão de Açúcar, not less than 75 minutes for Race Areas Ponte, Niterói and Copacabana and 'not less than 90 minutes' for Race Area Pai in the race signal AP.
- 4.5 When flag Y is displayed ashore, RRS 40 applies at all times while afloat. This changes the Part 4 preamble.
- 4.6 A boat shall not leave the shore until flag D is displayed ashore. The warning signal will be made not less than 30 minutes for the Race Area São Francisco; not less than 60 minutes for Race Areas Escola Naval, Aeroporto and Pão de Açúcar, not less than 75 minutes for Race Areas Ponte, Copacabana and Niterói and not less than 90 minutes for Race Area Pai after flag D is displayed or not before the schedule time, whichever is later.

## 5. CHANGING TO SAILING INSTRUCTIONS

- 5.1 Except for changes to the schedule of races and course assignments changes to the sailing instructions will be posted no later than two hours before the scheduled time of the first race affected.

## 6. FORMAT OF RACING

- 6.1 For Youth classes, the regatta will consist of an opening series without medal race. In all the opening series races, the classes that follow will be grouped on a single start sequence, course and overall results: 420 male with 420 female and 29er male with 29er female.
- 6.2 For Olympic classes the regatta will consist of an opening series followed by a Medal Race as per item 6.4. Youth classes Laser Radial and RS:X will be grouped with their Olympic class on a single starting sequence, course and overall results and for Medal Race criteria will be considered as one single class.
- 6.3 For the opening series of each class the number of races scheduled is as follow:

Class	Opening series	Races per day	Maximum races per day	Discard
Laser, 470, Finn, Laser and Radial (include Radial Youth)	10	2	3	1
49er, 49er FX, Nacra 17 e RS:X (include RS:X Youth)	12	3	4 (Modify NoR 6.3)	1
420, 29er and Hobie Cat 16	10	2	3	1

- 6.4 Medal Race:
- 6.4.1 A Medal Race is scheduled if four or more races have been completed before the Medal Race day. If less than four races of the opening series have been completed, the opening series will continue on that day until complete four races.
- 6.4.2 Will advance to the medal race the best ranked competitors of the opening series as follow:
- Classes with 10 or more entries, the best 10;
  - Classes with less than 10 entries, the best 5.
- 6.4.3 Assignments to the medal race will be based on the ranking available at 08h00 on the day of the medal race. The Jury may extend the time limit.

## 7. SCHEDULE OF RACES AND COURSE AREA ASSIGNMENTS

- 7.1 The provisional race schedule, including the time of the first warning signals, and assignment of classes to Course Areas is shown in SI Addendum C. An update to SI Addendum C will be posted by 1700 on 14 December.
- 7.2 Any reassignment of classes to course areas will be:
- 7.2.1 Posted by 0900 on the day it will take effect;
- 7.2.2 When flag AP is displayed ashore, 30 minutes before flag AP for that Event is removed; or
- 7.2.3 When flag AP is displayed afloat, the course area may be changed. The Race Committee signal boat will display flag L over the Event(s) flag and move to the new Course Area.

- 7.3 Races not sailed on the scheduled day may be sailed on a following day at the discretion of the race committee.
- 7.4 The warning signal for each succeeding race will be made as soon as practicable.
- 7.5 To alert boats that a race or sequence of races will begin soon, the orange starting line flag will be displayed with one sound at least five minutes before a warning signal is made.
- 7.6 On the last schedule day of racing for each class, no warning signal for an opening series race will be made after 1800 or at 1800 for medal race. Modify NoR 6.2.

## 8. CLASS FLAGS

### 8.1 CLASS

Finn  
 49er  
 49er FX  
 470 M  
 470 W  
 Laser  
 Radial & Radial Youth  
 RS:X M  
 RS:X W & RS:X Youth (8.5)  
 420 (M / W)  
 29er (M / W)  
 Hobie Cat 16

### FLAGS

White figure with Finn class insignia.  
 White figure with 49er class insignia.  
 Light blue figure with 49er FX class insignia.  
 White figure with 470 class insignia.  
 Light Blue figure with 470 class insignia.  
 White figure with Laser class insignia.  
 Light blue figure with Laser class insignia.  
 White figure with RS:X class insignia.  
 Light blue with RS:X class insignia.  
 White figure with 420 class insignia  
 White figure with 29er class insignia  
 White figure with Hobie Cat class insignia

## 9. COURSE AREAS

- 9.1 The course areas are shown in SI Addendum A.
- 9.2 Medal Races for all classes will be sailed on São Francisco area.

## 10. THE COURSES

- 10.1 The diagrams in SI Addendum B show the courses, the course designations, the approximate angles between legs, the order in which marks are to be passed, and the side on which each mark is to be left.
- 10.2 No later than the warning signal, the Race Committee starting boat will display the course signal and, except for men and women's Windsurfers, the approximate compass bearing of the first leg.

## 11. MARKS

- 11.1 Marks 1, 2, 3, and 4, offset, or associated gate marks, will be as follows:

<u>COURSE AREA</u>	<u>MARKS 1, 2, 3, 4</u>	<u>NEW MARK</u>	<u>INFLATABLE START/FINISH MARK</u>
Pão de Açúcar	Blue cylindrical	Blue with black strip cylindrical	Blue cylindrical
Escola Naval	Green cylindrical	Green cylindrical with black strip cylindrical	Green cylindrical
Ponte	Orange cylindrical	Orange cylindrical with black strip cylindrical	Orange cylindrical
Niterói	Yellow cylindrical	Yellow cylindrical with black strip cylindrical	Yellow cylindrical
Copacabana	Red cylindrical	Red with black strip cylindrical	Red cylindrical
Aeroporto	Blue cylindrical	Blue with black strip cylindrical	Blue cylindrical
São Francisco	TBA	TBA	TBA

- 11.2 Offset marks will be the same as Mark 1, 2, 3, 4. The starting and finishing line marks will be race committee vessels or inflatable marks.

## 12. THE START

- 12.1 The starting line will be between a staff displaying an orange flag on the Race Committee vessel at the starboard end and:
- 12.1.1 The course side of the starting mark at the port end, or
  - 12.1.2A staff displaying an orange flag on the race committee vessel at the port end.
- 12.2 A buoy may be attached to the race committee starting boat anchor line just below keel depth. Boats shall not pass between this buoy and the race committee starting boat at any time. This buoy is part of the race committee starting boat ground tackle. [DP]
- 12.3 When a starting sequence is in progress, boats whose warning signal has not been made shall avoid the starting area. The starting area is defined as a rectangle 50 meters from the starting line and marks in all directions. [DP]
- 12.4 If flag U has been displayed as the preparatory signal, no part of a boat's hull, crew or equipment shall be in the triangle formed by the ends of the starting line and the first mark during the last minute before her starting signal. If a boat breaks this rule and is identified, she shall be disqualified without a hearing but not if the race is restarted or re-sailed or postponed or abandoned before the starting signal. This changes RRS 26 and A5. When flag U is used as the preparatory signal, RRS 29.1 does not apply. The scoring abbreviation for a flag U penalty is UFD. This changes RRS A11.

## 13. COURSE CHANGES

- 13.1 To change the next leg of the course, the race committee will (a) lay a new mark, (b) move the finishing line, or (c) move the leeward gate. When a new mark is laid, the original mark will be removed as soon as possible. When in a subsequent change a new mark is replaced, it will be replaced by an original mark. When mark 1 has been replaced, mark 1a will not be reset. This changes RRS 33.
- 13.2 Courses will not be shortened. This changes RRS 32.

## 14. THE FINISH

- 14.1 The finishing line will be between a staff displaying an orange flag on the race committee vessel and either:
- 14.1.1 The course side of the nearby finishing mark, or
  - 14.1.2 A staff displaying an orange flag on the race committee vessel at the other end.

## 15. TIME LIMITS AND TARGET TIMES

- 15.1 For the opening series, time limits and target times in minutes are as follows:

Class	Time Limit	Mark 1 Time Limit	Finish Window	Target Time
RS:X (M)	45	20	10	20-25
RS:X (F) & RS:X Youth	45	20	10	20-25
Laser	75	25	15	50
Radial & Radial Youth	75	25	15	50
Finn	75	25	15	50
470 (M)	75	25	15	50
470 (F)	75	25	15	50
49er	50	20	10	30
49er FX	50	20	10	30
Nacra 17	50	20	10	30

15.2 For the Medal Race, time limits and target times in minutes are as follows:

Class	Time Limit	Mark 1 Time Limit	Finsih Window	Target Time
RS:X (M)	40	10	10	20
RS:X (F) & RS:X Youth	40	10	10	20
Laser	40	15	10	25
Radial & Radial Youth	40	15	10	25
Finn	40	15	10	25
470 (M)	40	15	10	25
470 (F)	40	15	10	25
49er	40	10	10	20
49er FX	40	10	10	20
Nacra 17	40	10	10	20

15.3 If no boat has passed Mark 1 within the Mark 1 Time Limit the race will be abandoned. Failure to meet the target time will not be grounds for redress. This changes rule 62.1(a).

15.4 Will be scored DNF without a hearing boats that not finish within finish window time after the first boat sails the course and finishes. This changes rules 35, A4 and A5.

## 16. PENALTY SYSTEM

16.1 A boat that accept a penalty by rule 44.1 shall fill an acknowledge form at the Regatta Office during protest time limit of that day. [NP] [DP]

16.2 Appendix P will apply.

16.3 For the Nacra, 49er and 49er FX, rules 44.1 and P2.1 are changed so that the Two-Turns Penalty is replaced by the One-Turn Penalty.

16.4 If in the medal race a boat is penalized for breaking rule 42 a second or third time during the regatta she may acknowledge her breach by immediately retiring from the race. If she fails to do so she will be disqualified without a hearing and ranked tenth in the regatta. If there are two such boats, they will be ranked ninth and tenth, in order of their opening-series ranks, etc. This changes rules P2.2 and P2.3

## 17. EQUIPMENT INSPECTION [DP]

17.1 All boats and equipment shall be available for inspection at the venue by 0900 on 14<sup>th</sup> December 2015 to 1000 on 15<sup>th</sup> December 2015.

17.2 The last sentence in RRS 78.2 is changed by replacing 'event' with 'opening series'.

17.3 A boat or equipment may be inspected at any time for compliance with the class rules and sailing instructions. On the water, a boat can be instructed by a race committee equipment inspector or measurer to proceed immediately to a designated area for inspection.

17.4 The substitution of equipment will not be permitted unless approved by the Principal Race Officer.

## 18. REPLACEMENT OF CREW [DP]

For One Person boats crew substitution is not permitted. For Two Person boats crew substitution is not permitted except in case of proven accident or illness and shall be approved in writing by the organizing authority.

## 19. OFFICIAL BOATS

19.1 Official boats will be marked as follows:

Race Committee	-	Orange flag
PRO	-	"PRO" blue under white background
Protest Committee	-	"Jury" white under blue background
Press	-	"Media" white under green background

- Equipment Inspector - "Measurer" white under violet background
- Organizers / VIP - "VIP" white under pink background

19.2 Actions by official boats shall not be grounds for requesting redress by a boat. This changes RRS 60.1(b).

## 20. SUPPORT TEAMS

- 20.1 Support Teams will be required to comply with local legislation.
- 20.2 Support boats shall be registered at the regatta Office no later than 1000 on 15 December 2015.
- 20.3 Team leaders, coaches and other support personnel shall stay outside areas where boats are racing from the time of the preparatory signal for the first class to start until all boats have finished or retired or the race committee signals a postponement, general recall or abandonment.
- 20.4 Support boats shall display the 3 letter national code of their ISAF Member National Authority at all times while afloat clearly visible from both sides of the boat. The minimum size for the letters shall be 200 mm.

## 21. IDENTIFICATION AND ADVERTISING WHILE RACING [SP] [NP]

- 21.1 When provided by the organizing authority, competitors shall wear coloured bibs for class leaders (1<sup>st</sup>, 2<sup>nd</sup>, 3<sup>rd</sup>). The bibs shall be collected each morning at the regatta office no later than 2 hours before first warning signal for that class and returned at the same place within protest time.

## 22. SCORING:

- 22.1 Rule B8 is deleted.
- 22.2 When fewer than five opening races have been completed a boat's series score will be the total of her race scores. When five or more opening races have been completed, a boat's series score will be the total of her race scores excluding the worst score. However, the score from any medal race will not be excluded.
- 22.3 A boat starting later than 4 (four) minutes after her starting signal will be scored as not started – DNS. This changes rule A4.
- 22.4 One race is required to be completed to constitute a regatta.
- 22.5 Medal race:
  - 22.5.1 For the Medal Race RRS A4.1 is changed so that the points are doubled. RRS A4.2 is changed so that the scores are based on the number of boats assigned in that race and then doubled.
  - 22.5.2 For boats assigned to compete in the medal race, ties will be broken by the Medal Race score. This changes RRS A8. For tied boats with the same points score in the Medal Race, ties will be broken applying RRS A8 to the opening series scores.
  - 22.5.3 The boats competing in the medal race shall be ranked highest in the regatta. This may not apply to a boat disqualified under RRS 5, 6 or 69.
  - 22.5.4 A boat assigned to compete in the Medal Race shall make a genuine effort to start, sail the course and finish. The penalty for a breach of this instruction will be ranking the boat tenth in the regatta. If there are two such boats, they will be ranked ninth and tenth, in order of their opening-series ranks, and so on. This changes RRS A2.
- 22.6 To request correction of an alleged error in posted race or series results, a boat may complete a scoring enquiry form available at the regatta office.

## 23. PROTESTS, PENALTIES AND REQUESTS FOR REDRESS

- 23.1 Protest forms are available at the Regatta Office. Protests and requests for redress or reopening shall be delivered to the regatta office within the appropriate time limit.
- 23.2 For each class, the protest time limit is 60 minutes after the last boat has finished the last race of the day for Race Areas Pão de Açúcar, Escola Naval and Aeroporto and 90 minutes for Ponte, Copacabana, Niterói and Pai. This time limit also applies to all Race Committee and Protest Committee protests about incidents they observed on the Race Areas and requests for redress (modifies rules 61.3 and 62.2).
- 23.3 Notices will be posted within 30 minutes of the protest time limit to inform competitors of hearings in which they are parties or named as witnesses. Hearings will be held in the protest room, located close to the boat park, beginning at the time posted. Hearings may be scheduled to begin up to 30 minutes before the end of protest time.
- 23.4 A list of boats that have been penalized under Appendix P for breaking rule 42 and under SI 23.7 will be posted.

- 23.5 Penalties for breaches of NoR 7 (Equipment Inspection), class rules or rules in the NOR and Sis marked [DP] or [SP] in the event of a hearing, are at the discretion of the International Jury.
- 23.6 Breaches of NOR 7 (Equipment Inspection) or rules in the Sis marked [NP] will not be grounds for a protest by a boat. This changes RRS 60.1(a).
- 23.7 For breaches of the NoR and the SIs marked [SP], the Race Committee may apply a standard penalty without a hearing or a discretionary penalty may be applied by the International Jury with a hearing. A list of these breaches and the associated standard penalties will be posted on the Official Notice Board. However, the Race Committee may protest a boat when they consider the standard penalty to be inappropriate. This changes RRS 63.1 and RRS A5.
- 23.8 On the last scheduled day of the opening series for each class a request for reopening a hearing shall be delivered:
- 23.8.1 within the protest time limit if the requesting party was informed of the decision on the previous day;
- 23.8.2 no later than 30 minutes after the requesting party was informed of the decision on that day.
- This changes rule 66.
- 23.9 On the last scheduled day of the opening series for each class a request for redress based on a protest decision shall be delivered no later than 30 minutes after the decision was posted. This changes rule 62.2.
- 23.10 If rule N1.4(b) applies, time limit to request a hearing under this rule is 30 minutes after the part have been informed of panel decision.

#### **24. RADIO COMUNICACION [DP]**

A boat shall neither make radio transmissions while racing nor receive radio communications not available to all boats, except in an emergency or when using equipment provided by the race committee. This restriction also applies to mobile telephones.

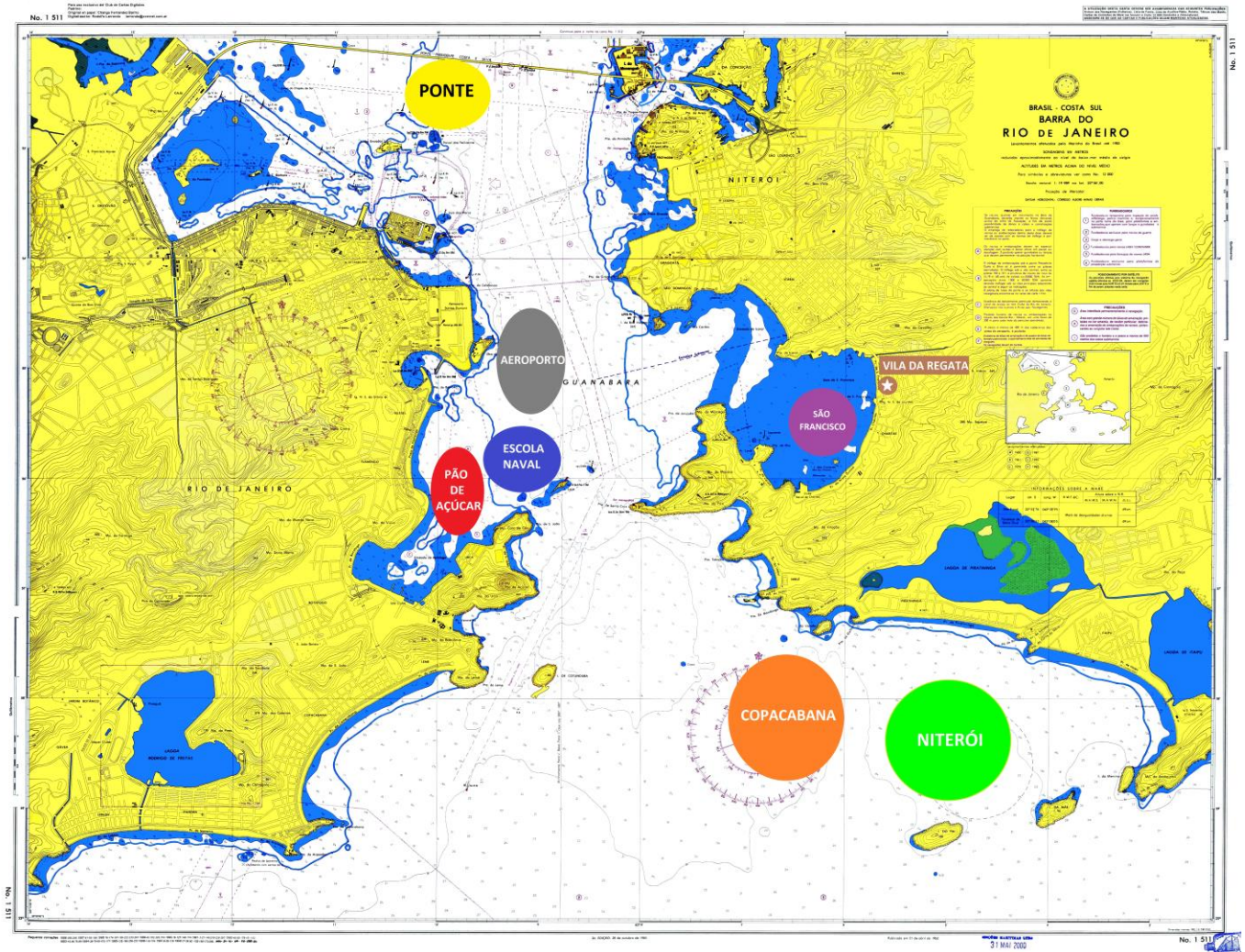
#### **25. PRIZES**

- 25.1 Prizes will be awarded to the top three boats in each class.
- 25.2 In Youth classes Laser Radial (Male and Female) and RS:X (Male and Female) the top 3 boats will be defined by the better three boats in the overall results grouped with the Olympic classes.
- 25.3 To honor sponsors and press that will attend the event on 20 December 2015, we kindly ask to winner athletes on each class to attend the Prize Giving Ceremonies.

#### **26. [NP] [DP] TRASH DISPOSAL:**

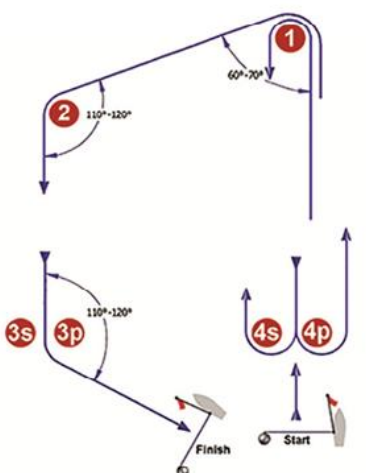
Trash may be placed aboard support or official boats.

## ADDENDUM A - RACE AREAS



## ADDENDUM B - COURSES

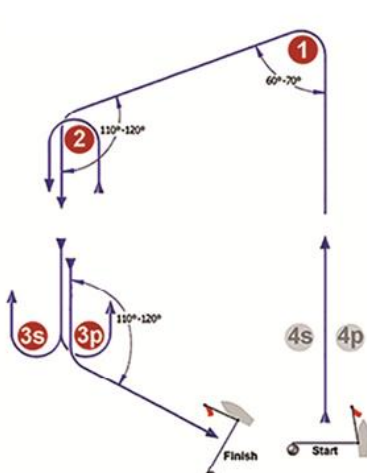
### I



Course: Inner Trapezoid

Signal	Mark Rounding Order
I2	Start - 1 - 4s/4p - 1 - 2 - 3p - Finish
I3	Start - 1 - 4s/4p - 1 - 4s/4p - 1 - 2 - 3p - Finish
I4	Start - 1 - 4s/4p - 1 - 4s/4p - 1 - 4s/4p - 1 - 2 - 3p - Finish

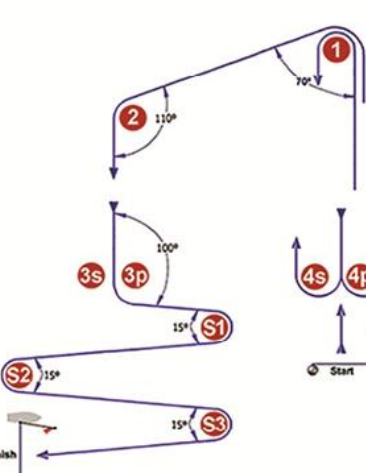
### O



Course: Outer Trapezoid

Signal	Mark Rounding Order
O2	Start - 1 - 2 - 3s/3p - 2 - 3p - Finish
O3	Start - 1 - 2 - 3s/3p - 2 - 3s/3p - 2 - 3p - Finish
O4	Start - 1 - 2 - 3s/3p - 2 - 3s/3p - 2 - 3s/3p - 2 - 3p - Finish

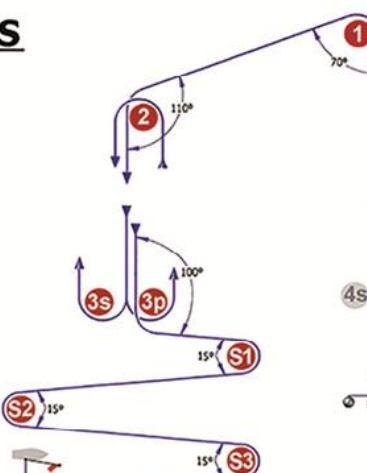
### IS



Course: Inner Slalom

Signal	Mark Rounding Order
IS2	Start - 1 - 4s/4p - 1 - 2 - 3p - S1 - S2 - S3 - Finish
IS3	Start - 1 - 4s/4p - 1 - 4s/4p - 1 - 2 - 3p - S1 - S2 - S3 - Finish
IS4	Start - 1 - 4s/4p - 1 - 4s/4p - 1 - 4s/4p - 1 - 2 - 3p - S1 - S2 - S3 - Finish

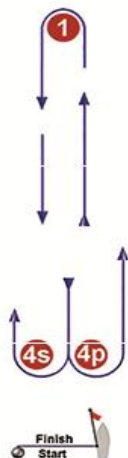
### OS



Course: Outer Slalom

Signal	Mark Rounding Order
OS2	Start - 1 - 2 - 3s/3p - 2 - 3p - S1 - S2 - S3 - Finish
OS3	Start - 1 - 2 - 3s/3p - 2 - 3s/3p - 2 - 3p - S1 - S2 - S3 - Finish
OS4	Start - 1 - 2 - 3s/3p - 2 - 3s/3p - 2 - 3s/3p - 2 - 3p - S1 - S2 - S3 - Finish

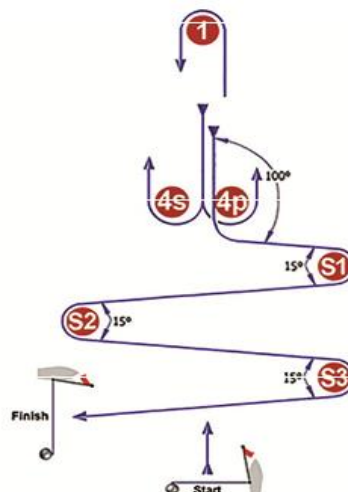
**L**



Course: Windward / Leeward

Signal	Mark Rounding Order
L2	Start - 1 - 4s/4p - 1 - Finish
L3	Start - 1 - 4s/4p - 1 - 4s/4p - 1 - Finish
L4	Start - 1 - 4s/4p - 1 - 4s/4p - 1 - 4s/4p - 1 - Finish

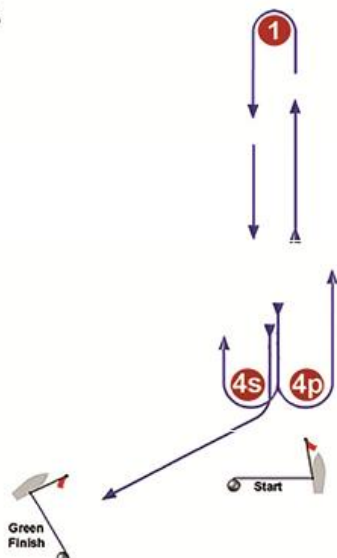
**LS**



Course: Windward/Leeward With Slalom Finish

Signal	Mark Rounding Order
LS2	Start - 1 - 4s/4p - 1 - 4p - S1 - S2 - S3 - Finish
LS3	Start - 1 - 4s/4p - 1 - 4s/4p - 1 - 4p - S1 - S2 - S3 - Finish
LS4	Start - 1 - 4s/4p - 1 - 4s/4p - 1 - 4s/4p - 1 - 4p - S1 - S2 - S3 - Finish

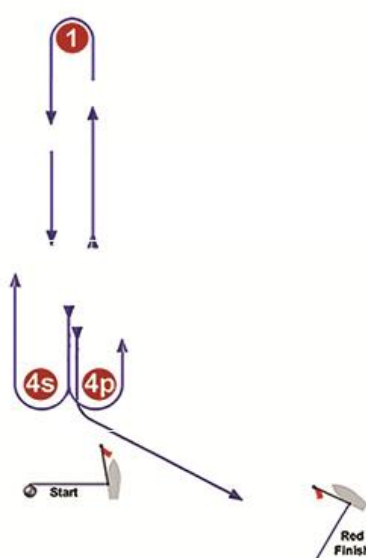
**LG**



Course: Windward / Leeward

Signal	Mark Rounding Order
LG2	Start - 1 - 4s/4p - 1 - 4s - Finish
LG3	Start - 1 - 4s/4p - 1 - 4s/4p - 1 - 4s - Finish
LG4	Start - 1 - 4s/4p - 1 - 4s/4p - 1 - 4s/4p - 1 - 4s - Finish

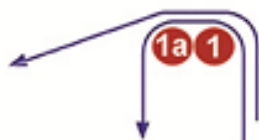
**LR**



Course: Windward / Leeward

Signal	Mark Rounding Order
LR2	Start - 1 - 4s/4p - 1 - 4p - Finish
LR3	Start - 1 - 4s/4p - 1 - 4s/4p - 1 - 4p - Finish
LR4	Start - 1 - 4s/4p - 1 - 4s/4p - 1 - 4s/4p - 1 - 4p - Finish

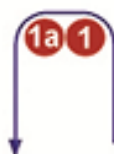
## IA



Course: Same As Course I Except with Offset Mark 1A

Signal	Mark Rounding Order
IA2	Start - 1 - 1a - 4s/4p - 1 - 1a - 2 - 3p - Finish
IA3	Start - 1 - 1a - 4s/4p - 1 - 1a - 4s/4p - 1 - 1a - 2 - 3p - Finish
IA4	Start - 1 - 1a - 4s/4p - 1 - 1a - 4s/4p - 1 - 1a - 4s/4p - 1 - 1a - 2 - 3p - Finish

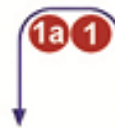
## LA



Course: Same As Course L Except with Offset Mark 1A

Signal	Mark Rounding Order
LA2	Start - 1 - 1a - 4s/4p - 1 - 1a - Finish
LA3	Start - 1 - 1a - 4s/4p - 1 - 1a - 4s/4p - 1 - 1a - Finish
LA4	Start - 1 - 1a - 4s/4p - 1 - 1a - 4s/4p - 1 - 1a - 4s/4p - 1 - 1a - Finish

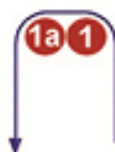
## LGA



Course: Same as LG Except With Offset Mark 1a

Signal	Mark Rounding Order
LGA2	Start - 1 - 1a - 4s/4p - 1 - 1a - 4s - Finish
LGA3	Start - 1 - 1a - 4s/4p - 1 - 1a - 4s/4p - 1 - 1a - 4s - Finish
LGA4	Start - 1 - 1a - 4s/4p - 1 - 1a - 4s/4p - 1 - 1a - 4s/4p - 1 - 1a - 4s - Finish

## LRA



Course: Same as LR Except With Offset Mark 1a

Signal	Mark Rounding Order
LRA2	Start - 1 - 1a - 4s/4p - 1 - 1a - 4p - Finish
LRA3	Start - 1 - 1a - 4s/4p - 1 - 1a - 4s/4p - 1 - 1a - 4p - Finish
LRA4	Start - 1 - 1a - 4s/4p - 1 - 1a - 4s/4p - 1 - 1a - 4s/4p - 1 - 1a - 4p - Finish

## ADDENDUM C - PROVISIONAL SCHEDULE OF RACES AND COURSE AREA ASSIGNMENTS

Classes	TUE 15		WED 16		THR 17		FRI 18		SAT 19		SUN 20	
	Area / Time	#	Area / Time	#	Area / Time	#	Area / Time	#	Area / Time	#	Area / Time	#
<b>RS:X (M)</b>	P. Açúcar 1300	3	E. Naval 1310	3	P. Açúcar 1530	3	Aeroporto 1310 - W/L	3	E. Naval 1300	3	S. Francisco TBA	MR
<b>RS:X (W) / RS:X Youth</b>	P. Açúcar 1310	3	E. Naval 1300	3	P. Açúcar 1540	3	Aeroporto 1300 - W/L	3	E. Naval 1310	3	S. Francisco TBA	MR
<b>Laser</b>	E. Naval 1300	2	Niteroi 1310	2	Aeroporto 1300 - W/L	2	Copa 1310	2	Niteroi 1530	2	S. Francisco TBA	MR
<b>Radial / Radial Youth</b>	E. Naval 1310	2	Niteroi 1300	2	Aeroporto 1310 - W/L	2	Copa 1300	2	Niteroi 1540	2	S. Francisco TBA	MR
<b>470 (M)</b>	Niteroi 1300	2	Copa 1300	2	Niteroi 1300	2	E. Naval 1300	2	Aeroporto 1300 - W/L	2	S. Francisco TBA	MR
<b>470 (W)</b>	Niteroi 1310	2	Copa 1310	2	Niteroi 1310	2	E. Naval 1310	2	Aeroporto 1310 - W/L	2	S. Francisco TBA	MR
<b>Finn</b>	Niteroi 1320	2	Copa 1320	2	Niteroi 1320	2	E. Naval 1320	2	Aeroporto 1530 - W/L	2	S. Francisco TBA	MR
<b>49er</b>	P. Açúcar 1530	3	Aeroporto 1300	3	E. Naval 1530	3	Aeroporto 1530	3	P. Açúcar 1530	3	S. Francisco TBA	MR
<b>49er FX</b>	Ponte 1530	3	Aeroporto 1530	3	P. Açúcar 1300	3	Ponte 1530	3	P. Açúcar 1300	3	S. Francisco TBA	MR
<b>Nacra</b>	Ponte 1300	3	Niteroi 1530	3	E. Naval 1300	3	Ponte 1300	3	Niteroi 1300	3	S. Francisco TBA	MR
<b>420 (M/F)</b>	TBA 1600		TBA 1600		TBA 1600		TBA 1600		TBA 1600			
<b>29er (M/F)</b>	TBA 1600		TBA 1600		TBA 1600		TBA 1600		TBA 1600			

## ADDENDUM Q – UMPIRED FLEET RACING

*Under rule 86.2 and Regulation 28.1.3, the ISAF has approved the use of these sailing instructions as an addendum to the sailing instructions in World Championship Grade, Grade 1 and Grade C1 events and the ISAF Sailing World Cup from January 21, 2013 and until changed, for umpired fleet racing in the last race(s) of each series for the Olympic classes. Similar events are also encouraged to use the addendum. This can be done under rule 86.3 if the national authority prescribes that rule changes are allowed for the purpose of development and testing. Please note that the national authority may prescribe that such changes require its approval. Events that use this addendum are requested to provide feedback to the ISAF to support further development.*

*Races may be sailed under the sailing instructions in this addendum only if the notice of race so states and the addendum is included in the sailing instructions.*

*Use of this addendum is recommended for races in which about ten one-design boats compete with umpires present. There should be one umpire boat for every three or four boats in the fleet.*

***When Addendum Q is printed in the sailing instructions, this paragraph and the three paragraphs above should be deleted. Nothing below should be changed or deleted.***

This addendum has been approved by ISAF in accordance with rule 86.2 and ISAF Regulation 28.1.3.

**Version:** January 21, 2013

*Marginal marks indicate important changes from the previous version.*

These sailing instructions change the definition Proper Course, and rules 20, 28.2, 44, 60, 61, 62, 63, 64.1, 65, 66, 70, 78.3 and B5.

### **Q1 CHANGES TO RACING RULES**

*Additional changes to rules are made in instructions Q2, Q3, Q4, and Q5.*

#### **Q1.1 Changes to the Definitions and the Rules of Part 2 and Part 4**

- (a) Add to the definition Proper Course: 'A boat taking a penalty or manoeuvring to take a penalty is not sailing a proper course.'
- (b) When rule 20 applies, the following arm signals are required in addition to the hails:
  - (1) for 'Room to tack', repeatedly and clearly pointing to windward; and
  - (2) for 'You tack', repeatedly and clearly pointing at the other boat and waving the arm to windward.Instruction Q1.1(b) does not apply to boards.

#### **Q1.2 Changes to Rules Involving Protests, Requests for Redress, Penalties and Exoneration**

- (a) The first sentence of rule 44.1 is replaced with: 'A boat may take a One-Turn Penalty when she may have broken a rule of Part 2 (except rule 14 when she has caused damage or injury) or rule 31 or 42 while racing.'
- (b) For boards, the One-Turn Penalty is one 360° turn with no requirement for a tack or a gybe.
- (c) Rule 60.1 is replaced with 'A boat may protest another boat or request redress provided she complies with instructions Q2.1 and Q2.4.'
- (d) The third sentence of rule 61.1(a) and all of rule 61.1(a)(2) are deleted. Rule B5 is deleted.
- (e) Rules 62.1(a), (b) and (d) are deleted. In a race where this addendum applies, there shall be no scoring adjustments for redress given under any of these rules for a previous race.
- (f) Rule 64.1(a) is changed so that the provision for exonerating a boat may be applied by the umpires without a hearing, and it takes precedence over any conflicting instruction of this addendum.
- (g) Rules P1 to P4 shall not apply.

## **Q2 PROTESTS AND REQUESTS FOR REDRESS BY BOATS**

- Q2.1** While racing, a boat may protest another boat under a rule of Part 2 (except rule 14) or under rule 31 or 42; however, a boat may only protest under a rule of Part 2 for an incident in which she was involved. To do so she shall hail 'Protest' and conspicuously display a red flag at the first reasonable opportunity for each. She shall remove the flag before, or at the first reasonable opportunity after a boat involved in the incident has taken a penalty voluntarily or after an umpire's decision. However, a board need not display a red flag.
- Q2.2** A boat that protests as provided in instruction Q2.1 is not entitled to a hearing. Instead, a boat involved in the incident may acknowledge breaking a rule by taking a One-Turn Penalty as described in rule 44.2. If the protested boat does not take a penalty voluntarily, an umpire will decide whether to penalize any boat and signal the decision as provided in instruction Q3.1.
- Q2.3** At the finishing line, the race committee will inform the competitors about each boat's finishing place or scoring abbreviation. After this has been done for all boats, the race committee will promptly display flag B with one sound. Two minutes later flag B will be removed with one sound.
- Q2.4** A boat intending to
- (a) protest another boat under a rule other than instruction Q3.2 or Q4.2(a), or a rule listed in instruction Q2.1,
  - (b) protest another boat under rule 14 if there was contact that caused damage or injury, or
  - (c) request redress
- shall hail the race committee before or during the display of flag B. The same time limit applies to protests under instructions Q5.4 and Q5.5. The protest committee may extend the time limit if there is good reason to do so.
- Q2.5** The race committee will promptly inform the protest committee about any protests or requests for redress made under instruction Q2.4.

## **Q3 UMPIRE SIGNALS AND IMPOSED PENALTIES**

- Q3.1** An umpire will signal a decision as follows:
- (a) A green and white flag with one long sound means 'No penalty.'
  - (b) A red flag with one long sound means 'A penalty is imposed or remains outstanding.' The umpire will hail or signal to identify each such boat.
  - (c) A black flag with one long sound means 'A boat is disqualified.' The umpire will hail or signal to identify the boat disqualified.
- Q3.2**
- (a) A boat penalized under instruction Q3.1(b) shall take a One-Turn Penalty as described in rule 44.2.
  - (b) A boat disqualified under instruction Q3.1(c) shall promptly leave the course area.

## **Q4 PENALTIES AND PROTESTS INITIATED BY AN UMPIRE; ROUNDING OR PASSING MARKS**

- Q4.1** When a boat
- (a) breaks rule 31 and does not take a penalty,
  - (b) breaks rule 42,
  - (c) gains an advantage despite taking a penalty,
  - (d) deliberately breaks a rule,
  - (e) commits a breach of sportsmanship, or
  - (f) fails to comply with instruction Q3.2 or to take a penalty when required to do so by an umpire,
- an umpire may penalize her without a protest by another boat. The umpire may impose one or more One-Turn Penalties to be taken as described in rule 44.2, each signalled in accordance with instruction Q3.1(b), or disqualify her under instruction Q3.1(c), or report the incident to the protest committee for further action. If a boat is penalized under instruction Q4.1(f) for not taking a penalty or taking a penalty incorrectly, the original penalty is cancelled.

- Q4.2** (a) A boat shall not round or pass a mark on the wrong side. If she does so, she may correct her error as provided in rule 28.2 only if she does so before she rounds or passes the next mark or finishes.
- (b) When a boat breaks instruction Q4.2(a) and fails to correct her error before rounding or passing the next mark or finishing, an umpire may disqualify her under instruction Q3.1(c).
- Q4.3** An umpire who decides, based on his own observation or a report received from any source, that a boat may have broken a rule, other than instruction Q3.2 or Q4.2(a) or a rule listed in instruction Q2.1, may inform the protest committee for its action under rule 60.3. However, he will not inform the protest committee of an alleged breach of rule 14 unless there is damage or injury.
- Q5 PROTESTS; REQUESTS FOR REDRESS OR REOPENING; APPEALS; OTHER PROCEEDINGS**
- Q5.1** No proceedings of any kind may be taken in relation to any action or non-action by an umpire.
- Q5.2** A boat may not base an appeal on an alleged improper action, omission or decision of the umpires or the protest committee. In rule 66 the third sentence is changed to 'A *party* to the hearing may not ask for a reopening.'
- Q5.3** (a) Protests and requests for redress need not be in writing.
- (b) The protest committee may take evidence and conduct the hearing in any way it considers appropriate and may communicate its decision orally.
- (c) If the protest committee decides that a breach of a rule has had no effect on the outcome of the race, it may impose a penalty of points or fraction of points or make another arrangement it decides is equitable, which may be to impose no penalty.
- Q5.4** The race committee will not protest a boat, except following a report under rule 43.1(c) or 78.3.
- Q5.5** The protest committee may protest a boat under rule 60.3. However, it will not protest a boat for breaking instruction Q3.2 or Q4.2(a), a rule listed in instruction Q2.1, or rule 14 unless there is damage or injury.